

Those in attendance:

Paul Bradbury (Airport Director)

Councilor Ed Suslovic (Portland City Council)

Mike Foley (Westbrook City Council)

Adrian Dowling (south Portland Representative)

Shane Bray (FedEx)

Cheryl Miner (Peaks Island)

Jerry Ainger (Portland Chamber of Commerce)

Jeremy Morton (Western Prom Neighborhood Assoc.)

Katherine Hughes (Delta Airlines Station Manager)

Mark Collins (FAA Air Traffic Manager)

Brad Wallace (PWM Operations)

6:30 PM, Meeting called to order by Councilor Suslovic. Introductions ensued.

Motion to approve last meeting's minutes was proposed by Mike Foley and seconded by Jerry Ainger. Motion passed unanimously.

1. "Jetport in the news/updates:"
 - a. Inland Tech
 - b. Elite Airways
 - c. NEA Improvements
 - d. MACJET
 - e. ASQ Award

2. Sustainable Airport Master Plan (SAMP):
 - a. Discussion on work and process to date
 - b. Planned to go before Portland City Council on November 21, 2016.
 - c. Discussion on high-energy runway crossings
 - d. Explanation of proposals to alleviate two-way traffic issues for Taxiway C between Rwy 11-29 and MACJET.
 - e. Maine Trails discussion of a walking path along the Fore River.

- f. Discussion on noise sensitive best management practices.
- g. Transportation Demand Management (TDM) review and update.

Opportunity for questions on the SAMP posed to Committee members. No questions asked.

3. Airline Schedule Update

- a. Discussion on the excellent combination of flights and carriers available at PWM.
- b. Review of flights operating during the noise sensitive hours for November (9), December (9) and January (7).

4. Conversation and explanation of the reason airlines schedule morning flights as they do (Airplanes chase the sun) took place. Councilor Suslovic confirms that neither the Jetport or the City of Portland have the authority to prevent aircraft from operating during certain hours at PWM, but the Jetport does encourage noise sensitivity considerations for air carriers during their scheduling considerations.

- a. A question was asked regarding who decides when the ATCT is opened or closed. (FAA.)

5. Old Business:

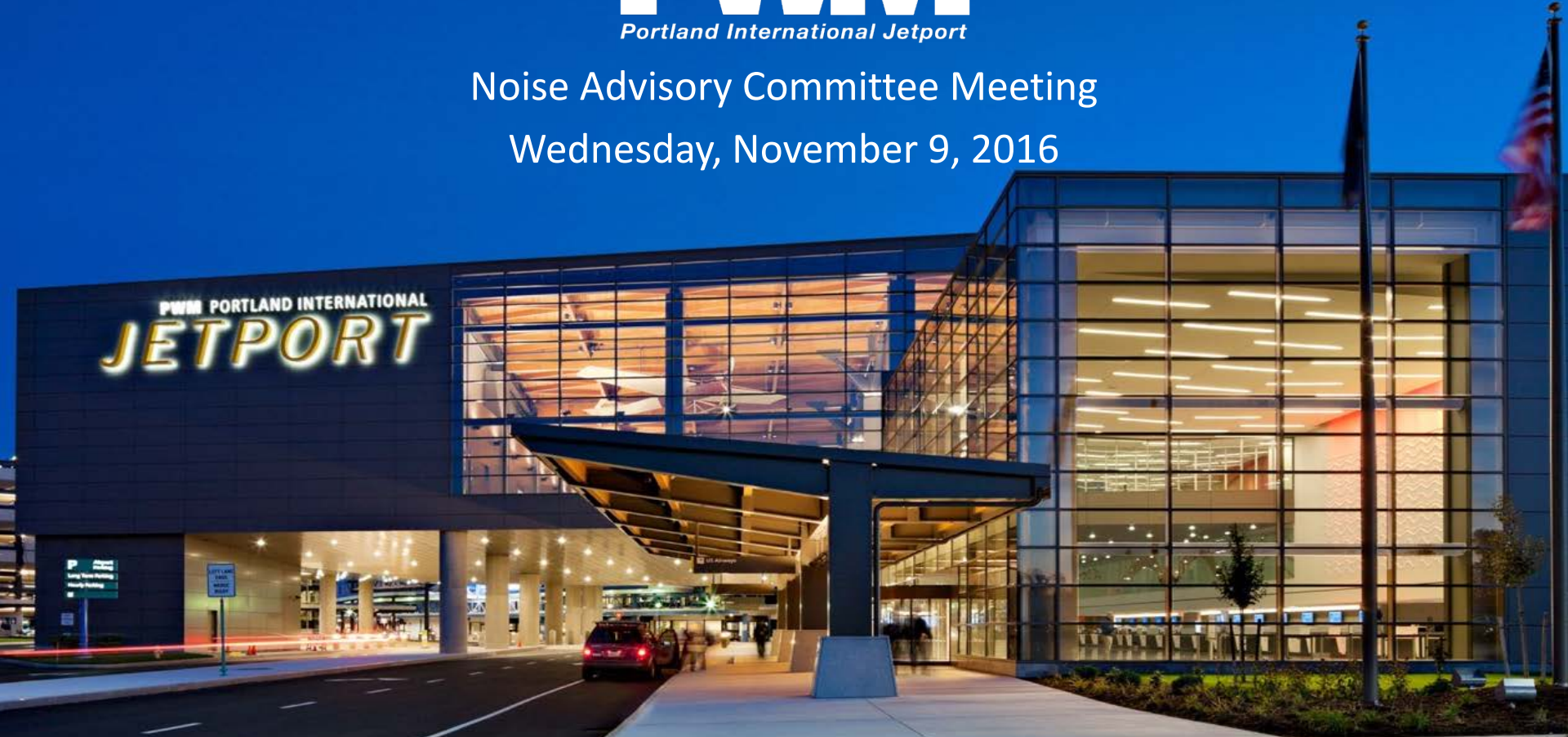
- a. Total Operations vs. total Passengers
- b. Passengers are up, while operations are down: more people are flying in fewer, but larger aircraft.
- c. Discussion on the realignment of the Terminal's gates to better accommodate the new fleet style.
- d. Question: Are the larger planes also noisier?
 - i. Answer: New technology has allowed for newer, larger planes to operate significantly quieter than older, smaller planes.
- e. Refresher discussion on the Committee's successful implementation of the RNAV.
- f. Primary Runway Usage (All traffic YTD for 2016)
- g. Noise preferred runway utilization explained. Choice of runway can be affected by various factors including wind, weather/snow removal operations, air carrier traffic volume and type, etc.
- h. Runway usage specific to Wiggins Airways (FedEx).
 - i. Discussion on the future connecting taxiway from the Cargo Apron to Taxiway A was held, specific to the possible benefits that will be had specific to Wiggins.
 - ii. Reminder that the pilot in command has final say, ATC cannot dictate a specific runway if a request is made for another runway (unless safety deems it inappropriate to do so).
- i. Noise reports by neighborhood. (Jan – April 2016.) 66 complaints from 4 neighborhoods.
 - i. Westbrook, 1, (1%)
 - ii. South Portland, 34 (52%)

- iii. Portland, 11 (17%)
 - iv. Stroudwater, 20, (17%)
 - j. Discussion on the RNAV track began. Councilor Suslovic requested that the discussion cease tonight but be added to the next meeting at which point we will be able to provide visuals to help the room better understand the conversation. It was agreed that a review of the RNAV will take place next meeting.
- 6. Councilor Suslovic solicited interest in a neighborhood-based outreach for all committee neighborhoods. The Jetport offered to travel to any neighborhood to meet with the citizens and provide an opportunity to share the Jetport's noise abatement efforts while fielding questions.
- 7. Announcements: PWM Passenger Stats.
 - a. 2016 passenger statistics through September.
 - b. Available seats October 2016- March 2017
 - i. PWM up 7.9% year over year for November through April
 - ii. October 2016 was up 9.6%
 - iii. 3.1% increase in seats available for all of 2016.
- 8. Questions/Public Comment:
 - a. David Silk spoke to a prior master plan discussion that he held with Paul and Councilor Suslovic specific to the SAMP impact on the Stroudwater community and was grateful for the time and opportunity to discuss.
 - b. David Wakelin from Loveitt's Field Neighborhood address the room to speak of a recent perceived shift (over the past several months) that have seen aircraft that previously missed their neighborhood, now overflying their neighborhood. His request was to seek representation for his neighborhood on the committee, and short of that representation, he would like to develop a relationship between himself and the NAC.
 - c. Triss Critchfield (Loveitt's Field) was looking for a better understanding of the recent/pronounced change in the number of aircraft that are flying over their neighborhood as of this summer. She stated that her objective is to better understand why this may be happening.
 - i. The Jetport/ Councilor did make the Jetport available for a neighborhood outreach if such a request were made.
- 9. Councilor Suslovic did announce that he would not be serving on this committee moving forward but did state that the new representative would be in touch with the committee and it is expected that he will reach out to set the date for the next committee meeting soon.
 - a. Closing remarks, Councilor Suslovic addresses the room and shares his appreciation for the work and collaboration that has taken place on the Committee during his tenure.

- b. The room reciprocates.
- 10. Motion to adjourn the meeting proposed by Councilor Suslovic at 7:55 P.M. Motion passes unanimously.



Noise Advisory Committee Meeting
Wednesday, November 9, 2016



Agenda

1. Welcome / Introduction New Members
2. Approval of Minutes
3. Jetport in the News / Updates
 - A. Sustainable Airport Master Plan
4. Old Business
 - A. Noise Report Statistics
 - B. Community Outreach Sessions
5. New Business
6. Announcements
7. Questions / Public Comment
8. Next Meeting
9. Adjournment

Airline Schedule Update

PWM will continue to report to the Committee changes in the airline schedule that occur during noise sensitive hours

10pm-7am according to the FAA Day Night Average Sound Level (DNL) calculations.

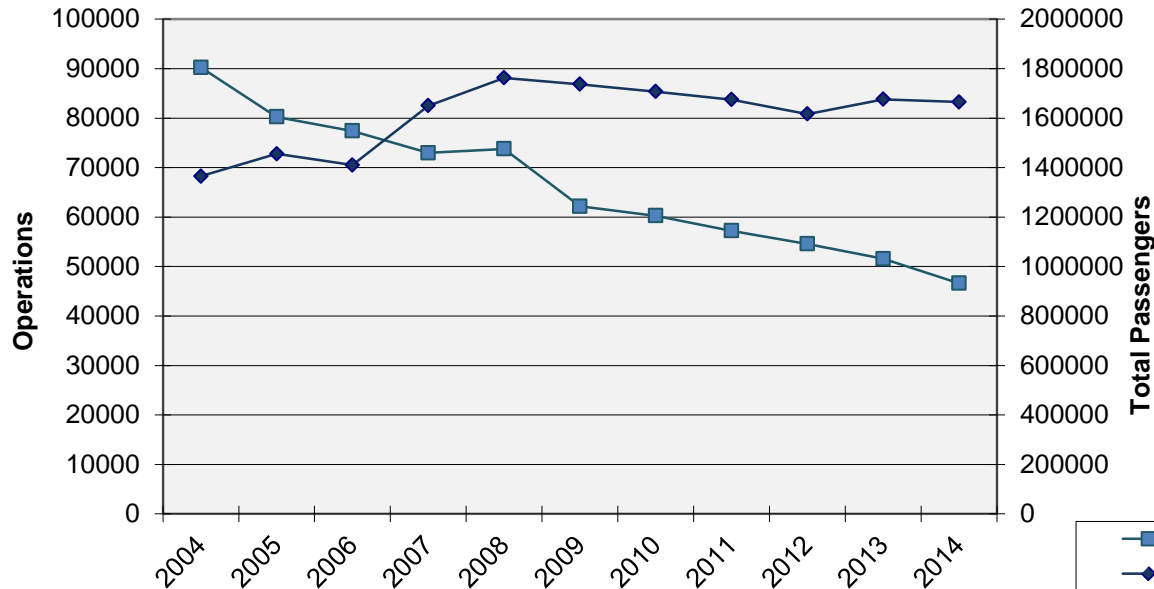
- Nov – 9 flights operate during noise sensitive hours
- Dec – 9 flights operate during noise sensitive hours
- Jan – 7 flights operate during noise sensitive hours

PWM Noise Sensitive hours according to the Record of Approval is 11:30 p.m. – 6:15 a.m.



Old Business – Total Operations vs Total Passengers

Operations vs Total Passengers



2015 Totals

Total Operations 46,199 ↓

Total Passengers 1,739,906 ↑

2014 Totals

Total Operations 46,633 ↓

Total Passengers 1,665,209 ↓

2013 Totals

Total Operations 51,568 ↓

Total Passengers 1,675,978 ↑

Old Business – Primary Runway Usage – All Traffic YTD 2016

PWM Commercial & G.A. Operations

2016	January	February	March	April	May	June	July	August	September	October	November	December	Totals
11A	261	317	638	612	843	792	963	639	902	925			6892
11D	653	385	678	698	1075	758	1108	836	959	854			8004
18A	21	37	67	100	111	215	169	177	152	159			1208
18D	56	77	127	173	242	345	392	354	283	216			2265
29A	816	744	673	755	696	927	1148	1338	962	833			8892
29D	716	653	629	757	694	992	1108	1310	912	851			8622
36A	55	49	70	124	46	152	124	162	78	148			1008
36D	49	34	71	147	62	132	126	150	87	145			1003
Total	2627	2296	2953	3366	3769	4313	5138	4966	4335	4131	0	0	37894
% Use of Primary Runway	93%	91%	89%	84%	88%	80%	84%	83%	86%	84%	#####	#####	86%

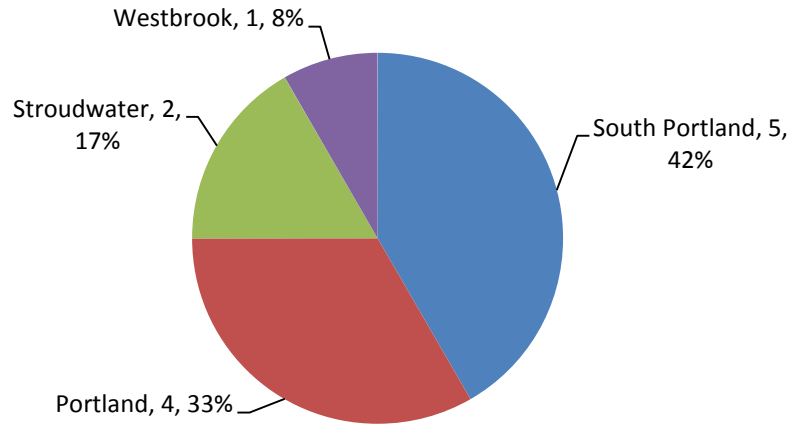
Old Business – Runway Usage – Wiggins Airways (FedEx)

		Operations	Percentage
2008	Rwy 18/36	453	26%
	Rwy 11/29	1274	74%
2009	Rwy 18/36	688	35%
	Rwy 11/29	1306	65%
2010	Rwy 18/36	526	24%
	Rwy 11/29	1623	76%
2011	Rwy 18/36	562	20%
	Rwy 11/29	2202	80%
2012	Rwy 18/36	62*	12%
	Rwy 11/29	474*	88%
2013	NO DATA AVAILABLE		
2014	Rwy 18/36	373	29%
	Rwy 11/29	1268	71%
2015	Rwy 18/36	807	46%
	Rwy 11/29	949	54%
YTD 2016	Rwy 18/36	694	50%
	Rwy 11/29	696	50%



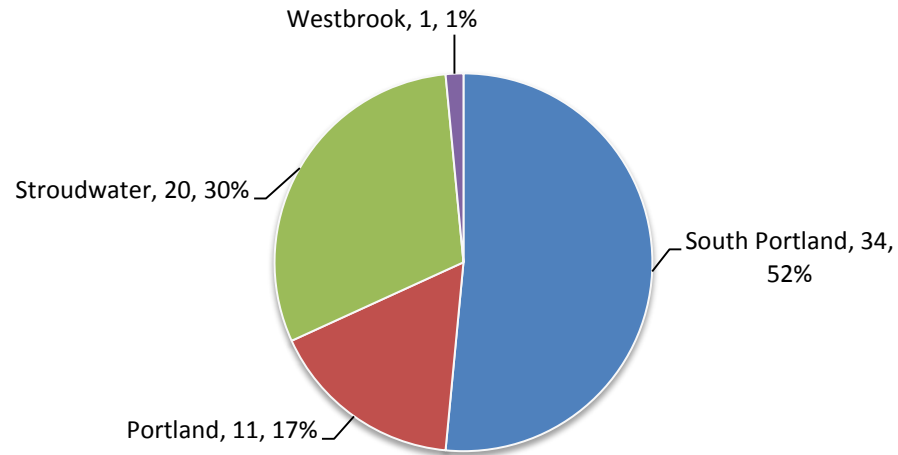
Old Business – Noise Reporters per Neighborhood – Jan – Apr 2016

Noise Reporters Per Neighborhood



Old Business – Noise Reports by Neighborhood – Jan- Apr 2016

Noise Reports Per Neighborhood



Old Business – Community Outreach Sessions

- Part of PWM's Noise Compatibility Plan
- Notify PWM of community meeting dates and times so we may attend
- Recent community meetings
 - Jul 2011 – South Portland
 - Jun 2012 – Peaks Island
 - Oct 2012 – Stroudwater Village Association
 - Sep 2013 – South Portland
 - April 15, 2015 – Peaks Island Community
 - May 28, 2015 – South Portland

Announcements

Old Business – Community Outreach Sessions

- Part of PWM's Noise Compatibility Plan
- Notify PWM of community meeting dates and times so we may attend
- Recent community meetings
 - Jul 2011 – South Portland
 - Jun 2012 – Peaks Island
 - Oct 2012 – Stroudwater Village Association
 - Sep 2013 – South Portland
 - April 15, 2015 – Peaks Island Community
 - May 28, 2015 – South Portland

Questions / Public Comment

Please State Your Name & Address for the Record



Thank you