

Noise Advisory Committee Meeting

June 2, 2022 at 6:00 pm

Zoom Webinar Meeting link:

<https://portlandmaine-gov.zoom.us/j/89571561820?pwd=ZHF6ODBScStHSm9iOUh4QjRwQU80Zz09>

Passcode: 974375

Or One tap mobile :

US: +19292056099,,89571561820#,,,,*974375# or

+13017158592,,89571561820#,,,,*974375#

Or Telephone:

Dial(for higher quality, dial a number based on your current location):

US: +1 929 205 6099 or +1 301 715 8592 or +1 312 626 6799 or +1 669 900

6833 or +1 253 215 8782 or +1 346 248 7799

Webinar ID: 895 7156 1820

Passcode: 974375



**Maine's
Home
Airport.**



AGENDA: NAC June 2, 2022

The Portland Int'l Jetport Noise Advisory Committee will conduct this meeting by remote methods/technology at the Zoom link provided below, in accordance with the requirements of 1 M.R.S. section 403-B because of the existence of an emergency or urgent issue that requires the committee to meet by remote methods. Allow your computer to install the free Zoom app to get the best meeting experience. If you are not able to attend live, a recording will be uploaded to <https://portlandjetport.org/noise> abatement-program. Please click the link below to join the webinar:
Zoom Webinar Meeting link: <https://portlandmaine-gov.zoom.us/j/89571561820?pwd=ZHF6ODBScStHSm9iOUh4QjRwQU80Zz09> **Passcode: 974375**

1. **Welcome / Meeting Information / Process**
2. **Opening Questions/ Public Comment (15 minutes)**
3. **Approval of the Minutes for the April 7, 2022 Meeting (Link to [Draft Minutes](#) and Meeting [Meeting Presentation](#))**
4. **Jetport Operating Statistics: Passenger volumes, capacity, # operations, and COVID Impact**
5. **Noise Data: Noise report tabulations through April 2022.**
6. **Old Business: Update on Runway 11/29 Rehabilitation Project**
7. **New Business: The NAC will review recommendations prepared by the subcommittee established by the NAC at its April 7, 2022 meeting to provide recommendations on a proposal submitted by: Peaks Island Council- Flight Path Committee, Little Diamond Island Association, and the Western Promenade Neighborhood Association.**
8. **Closing Questions / Public Comment**
9. **Next Meeting: Committee will consider whether to schedule a meeting in June. Proposed date is Thursday, June 2, 2022.**
10. **Adjournment**

1. Welcome NAC Members and Public Attendees

Portland City Councilor (Chair) Councilor Tae Chong	Peaks Island Resident Representative Jennifer Lavanture
Stroudwater Village Association President or Designee Tom Ainsworth	President of Western Promenade or Designee Dr. Jeremy Morton
South Portland City Councilor or Representative Mayor Deqa Dhalac	South Portland Resident Representative David Wakelin
Westbrook City Councilor or Representative Mayor Mike Foley	Cape Elizabeth Town Councilor or Representative Councilor Penny Jordan
Greater Portland Chamber of Commerce President or Designee Greater Portland Chamber appointing new representative	FAA Air Traffic Control Manager (Acting) Shaun Patten
Air Cargo Station Manager Steve Dalzell	Signatory Airline Station Manager Katherine Hughes
Gorham Town Councilor or Representative Council Chairman Lee Pratt	Scarborough Town Councilor or Representative Scarborough Appointing new representative

2. Opening Questions/Public Comment (15 minutes)

The Portland Int'l Jetport June 2, 2022 Noise Advisory Committee will be held as a hybrid meeting. Attendees may participate in person at the Jetport conference room or via the following Zoom Webinar Meeting link. If you are not able to attend live, a recording will be uploaded to <https://portlandjetport.org/noise>. Please click the link below to join the webinar:

Zoom Webinar Meeting link:

<https://portlandmaine-gov.zoom.us/j/89571561820?pwd=ZHF6ODBscStHSm9iOUh4QjRwQU80Zz09>

Passcode: 974375

- For public comment by Zoom attendees, you will need to use the “raise your hand” feature in Zoom so you can be recognized by the host. Telephone participants can dial *9 to raise their hand. You will be unmuted by the host when it is time for public comment.
- Please state your name and address for the record.

3. Approval of April 7, 2022 Meeting Minutes

Portland International Jetport Noise Advisory Committee
1001 Westbrook Street, Portland, Maine 04102



Date	Start	End	Next Meeting	Next Time	Prepared By	Company
04/07/2022	6:00 PM	7:17 PM	06/02/2022	6:00 PM	B. Treadwell	PWM

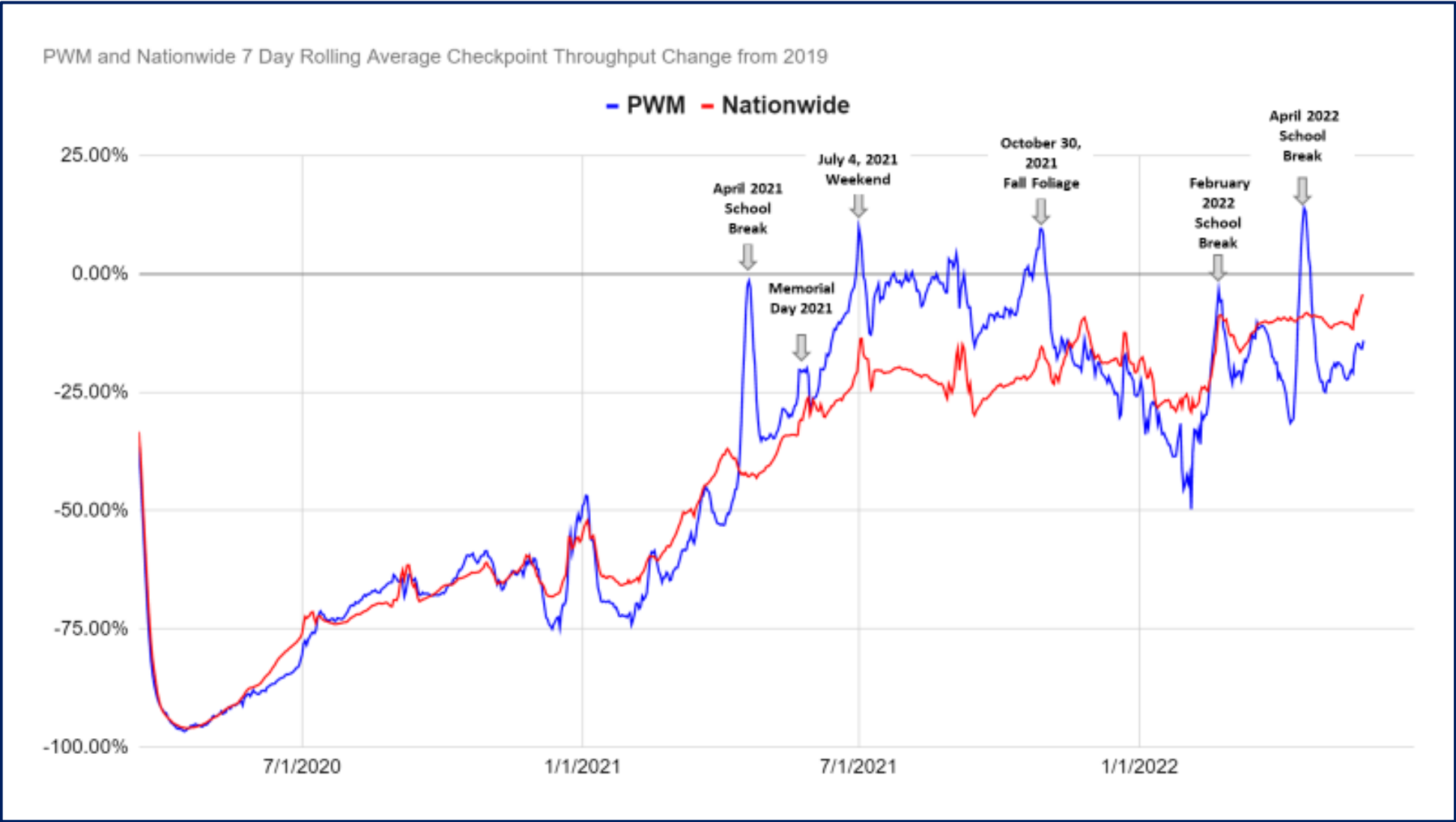
Attended By	Absentees
Shaun Patten – FAA ATC	Tae Chong – Portland City Council / NAC Chair
Tom Ainsworth – Stroudwater Village Rep.	Guy Gledhill – Scarborough Town Council
David Wakelin – South Portland Resident Rep.	
Jennifer Lavanture – Peaks Island Resident Rep.	
Dr. Jeremy Morton – Western Promenade Rep.	PWM Representatives
Jerry Angier – Greater Portland Chamber Rep.	Paul Bradbury – Airport Director
Katherine Hughes – Air Carrier Rep.	Zachary Briggs – Dep. Director Ops & Maintenance
Mike Foley – Westbrook Mayor	Ben Treadwell – Operations Supervisor
Steve Dalzell – FedEx / Air Cargo	
Deqa Dhalac – South Portland Mayor	FAA Attendees
Lee Pratt – Gorham Town Council	Ken Knopp
Penny Jordan – Cape Elizabeth Town Council	Camille Sprauve
	Emerson Colvin
Non-Member Attendees	Ralph Nicosia-Rusin
Anne Pringle	
Basil Klosteridis	
John Levesque	
Brenda Kielty	
Natalie West	
Lisa Orff	
Triss Critchfield	
Camille Sprauve	
Steve Brown	
Julia Shane	
Deborah Napier	
Vicki Flanigan	
Lee Harvey	
(Additional Member of the public were in attendance but did not identify themselves)	

- Approval of the Minutes for the April 7, 2022 Meeting (Link to [Draft Minutes](https://portlandjetport.org/sites/default/files/files/Meeting Minutes 04-07-2022.pdf) and [Meeting Presentation](https://portlandjetport.org/sites/default/files/files/NAC Meeting Presentation 04072022.pdf)).

<https://portlandjetport.org/sites/default/files/files/Meeting Minutes 04-07-2022.pdf>

<https://portlandjetport.org/sites/default/files/files/NAC Meeting Presentation 04072022.pdf>

4. Jetport Operating Statistics – COVID-19 Impact



PWM continues to trail the nation, but is trending higher as we enter the summer tourism season.

May 2022 Average
Nationwide: -9.5%
PWM: -18.7%

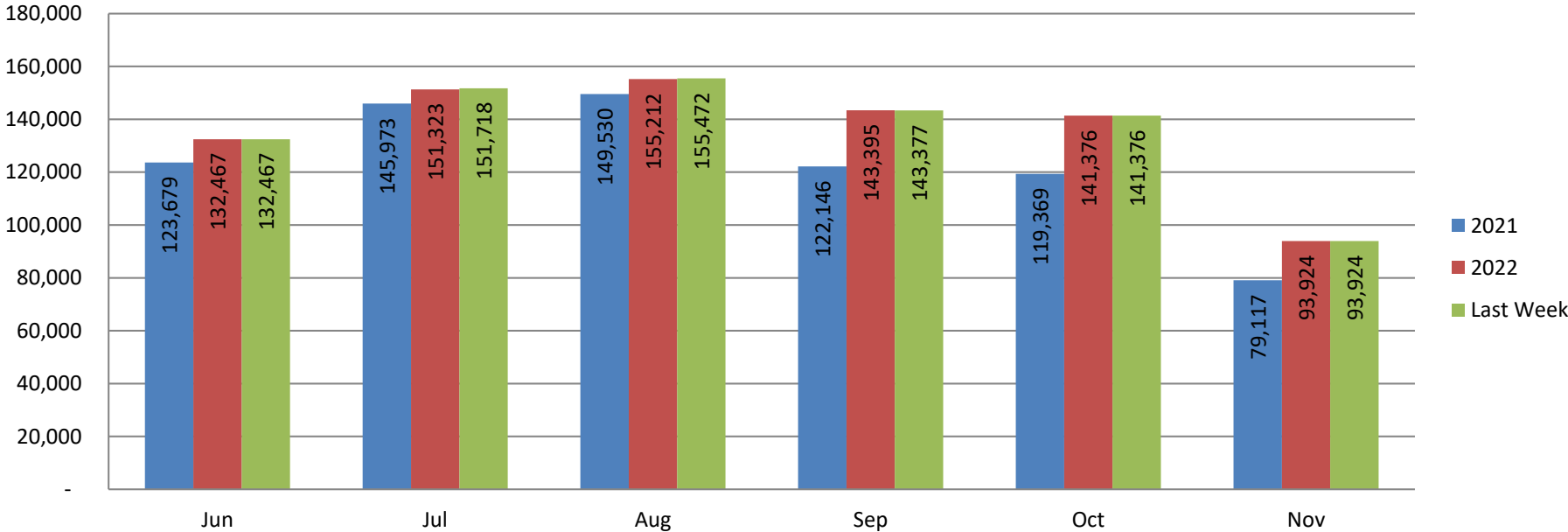
4. Jetport Operating Statistics – Historical Enplanements

														YOY
	JAN	FEB	MAR	APR	MAY	JUN	JUL	AUG	SEP	OCT	NOV	DEC	Total	% Change
2011	51,278	53,493	65,925	63,835	68,188	76,236	92,855	95,219	77,163	79,097	61,393	55,139	839,821	
2012	49,310	51,971	60,574	64,041	68,543	74,159	87,503	92,742	77,661	76,475	58,972	54,103	816,054	-2.8%
2013	50,413	49,175	60,393	66,643	70,906	74,518	90,596	96,583	82,396	84,320	59,029	58,972	843,944	3.4%
2014	48,818	48,770	64,414	65,873	69,448	75,085	88,763	96,224	82,881	85,388	58,365	60,012	844,041	0.0%
2015	48,563	46,461	59,348	64,355	71,113	82,041	97,206	102,054	86,623	87,892	65,595	58,702	869,953	3.1%
2016	49,982	48,897	61,051	66,309	72,695	79,392	95,454	100,668	92,260	94,762	68,821	65,138	895,429	2.9%
2017	54,499	50,256	65,566	67,338	75,344	84,231	101,368	104,165	92,530	99,996	71,613	64,343	931,249	4.0%
2018	56,272	57,672	62,490	77,423	81,816	100,961	122,194	130,339	110,634	115,234	83,995	74,537	1,073,567	15.3%
2019	64,824	65,678	77,180	78,421	84,340	100,525	119,151	127,461	113,123	110,707	77,611	75,017	1,094,038	1.9%
2020	67,985	67,499	36,979	2,535	7,184	14,486	32,359	41,658	35,281	39,605	27,399	24,272	397,242	-63.7%
2021	20,907	22,255	34,213	52,122	60,022	91,447	120,481	126,572	101,867	106,803	64,519	56,104	857,312	115.8%
2022	43,509	53,468	66,297	70,956									234,230	
Change ENP YOY	108.1%	140.3%	93.8%	36.1%										
Change ENP vs 2019	-32.9%	-18.6%	-14.1%	-9.5%										
Cap 22	74,182	68,895	80,167	89,153	94,118	132,467	151,718	155,472	143,377	141,376	93,924	93,553	1,318,402	
LF 22	58.7%	77.6%	82.7%	79.6%										
Cap 21	46,494	42,474	58,983	73,687	78,670	123,679	145,973	149,530	122,146	119,369	79,117	71,691	1,111,813	
LF 21	45.0%	52.4%	58.0%	70.7%	76.3%	73.9%	82.5%	84.6%	83.4%	89.5%	81.5%	78.3%	77.1%	
Change CAP 21/22	60%	62%	36%	21%	20%	7%	4%	4%	17%	18%	19%	30%	19%	
Change CAP 19/22	-16%	-15%	-12%	-3%	-9%	9%	10%	9%	13%	16%	1%	3%	2%	

4. Jetport Operating Statistics – Available Seats June – Nov. 2022

Available Seats

Updated 6/1/2022



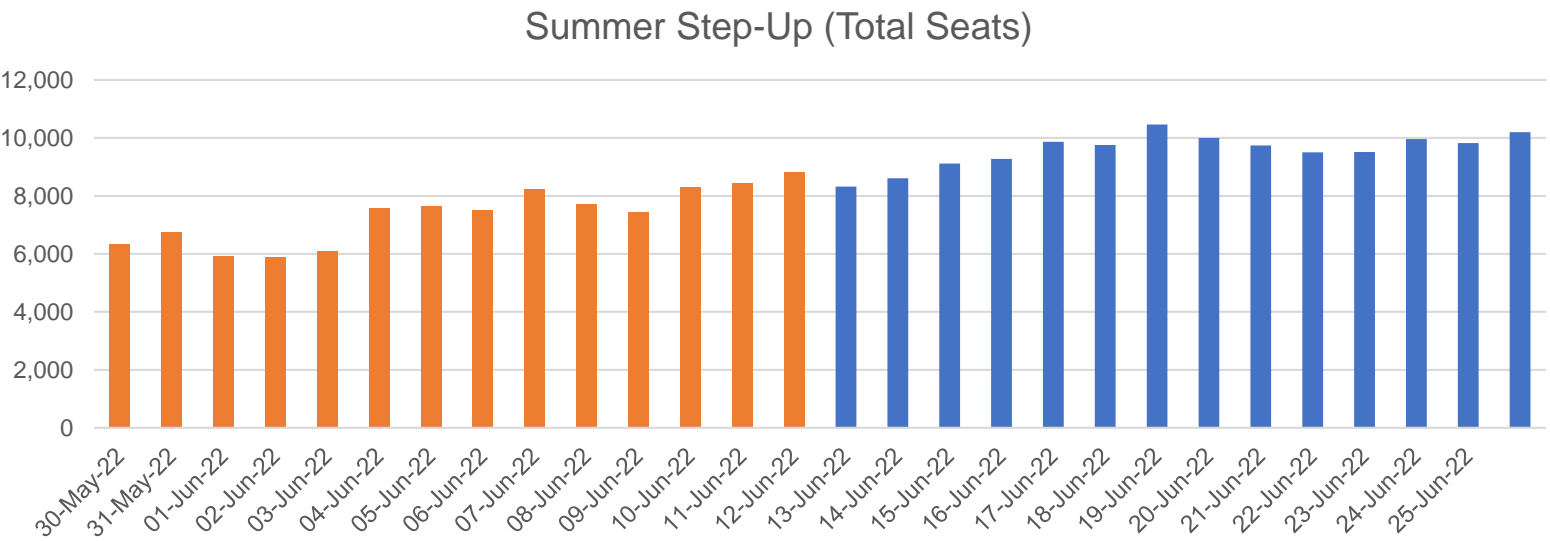
Outbound Capacity is up **77,883** seats over the next six months. This is an increase of **10.50%** year-over-year and is due to COVID impact on capacity last year.

2022 v 2019 capacity is up **73,642** seats over the next six months when compared to 2019. This is an increase of **9.90%**

Change 21/22	8,788	5,350	5,682	21,249	22,007	14,807	77,883
%	7.1%	3.7%	3.8%	17.4%	18.4%	18.7%	10.5%
2019/20	121,715	137,503	142,466	126,980	122,380	93,011	744,055
Change 19/22	10,752	13,820	12,746	16,415	18,996	913	73,642
%	8.83%	10.05%	8.95%	12.93%	15.52%	0.98%	9.90%

4. Jetport Operating Statistics – 2022 Summer Capacity

- June-October Capacity all end in Top 11 all-time months



Rank	Available Outbound Seats	Month
1	155,212	Aug-22
2	151,313	Jul-22
3	149,530	Aug-21
4	148,580	Aug-18
5	145,973	Jul-21
6	143,457	Jul-18
7	143,395	Sep-22
8	142,466	Aug-19
9	141,376	Oct-22
10	137,503	Jul-19
11	132,467	Jun-22
12	132,357	Sep-18
13	132,078	Oct-18
14	125,797	Jun-18
15	123,690	Aug-08

Although capacity is at an all-time record up **11.1%** over 2019 for the same period, the number of flights is down **11.3%** from pre-pandemic 2019 levels for the same June – October period.

5. Noise Data: Noise Reports vs Reporters

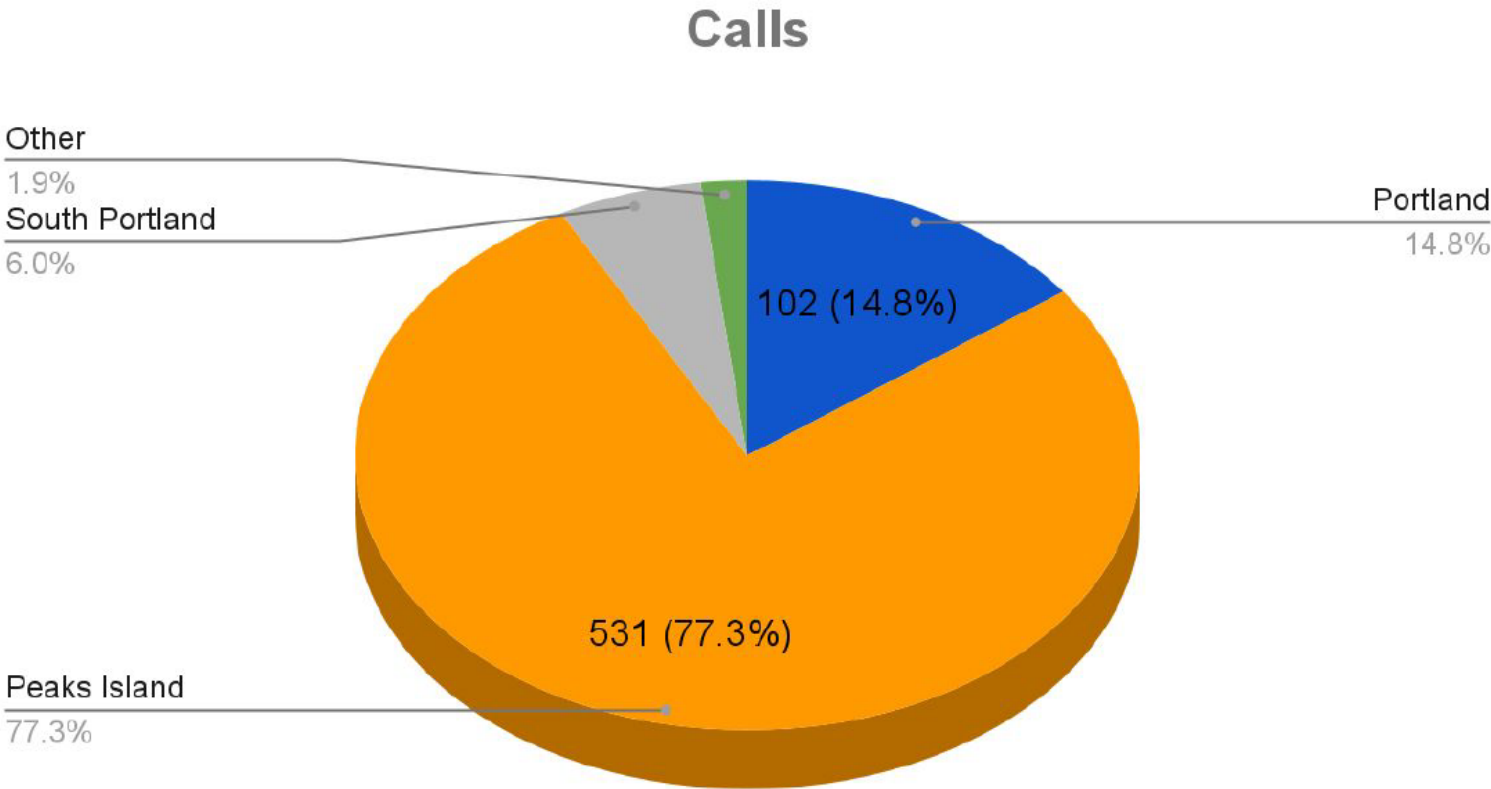
-	-	Jan	Feb	Mar	Apr	May	Jun	Jul	Aug	Sep	Oct	Nov	Dec	Total
2014	Report	6	26	32	31	24	42	59	44	19	19	7	28	337
	Reporter	1	2	4	4	7	8	9	15	13	7	2	2	74
2015	Report	7	7	13	28	38	46	75	49	78	43	2	2	388
	Reporter	1	2	4	4	7	8	9	15	13	7	2	2	74
2016	Report	11	8	21	26	37	33	106	137	34	14	19	21	467
	Reporter	4	5	4	7	7	8	13	12	9	4	1	4	78
2017	Report	3	1	4	10	29	31	33	84	61	76	429	169	930
	Reporter	2	1	4	4	8	10	15	19	21	16	17	8	125
2018	Report	172	44	22	40	52	57	227	180	129	204	160	119	1406
	Reporter	4	9	9	4	8	16	27	22	17	18	16	31	181
2019	Report	74	34	33	9	55	97	115	359	141	66	58	33	1074
	Reporter	15	11	6	4	17	30	43	76	35	3	8	3	251
2020	Report	53	56	61	22	89	150	267	240	143	68	78	26	1253
	Reporter	9	9	9	5	31	48	38	49	22	18	20	9	267
2021	Report	34	19	54	53	87	160	207	397	343	286	300	222	2162
	Reporter	16	6	22	15	34	49	48	47	36	35	16	21	345
2022	Report	199	124	235	129									687
	Reporter	10	19	20	30									56*

* Unique Reporters

5. Noise Data: Reports by Neighborhood (January – February 2022)

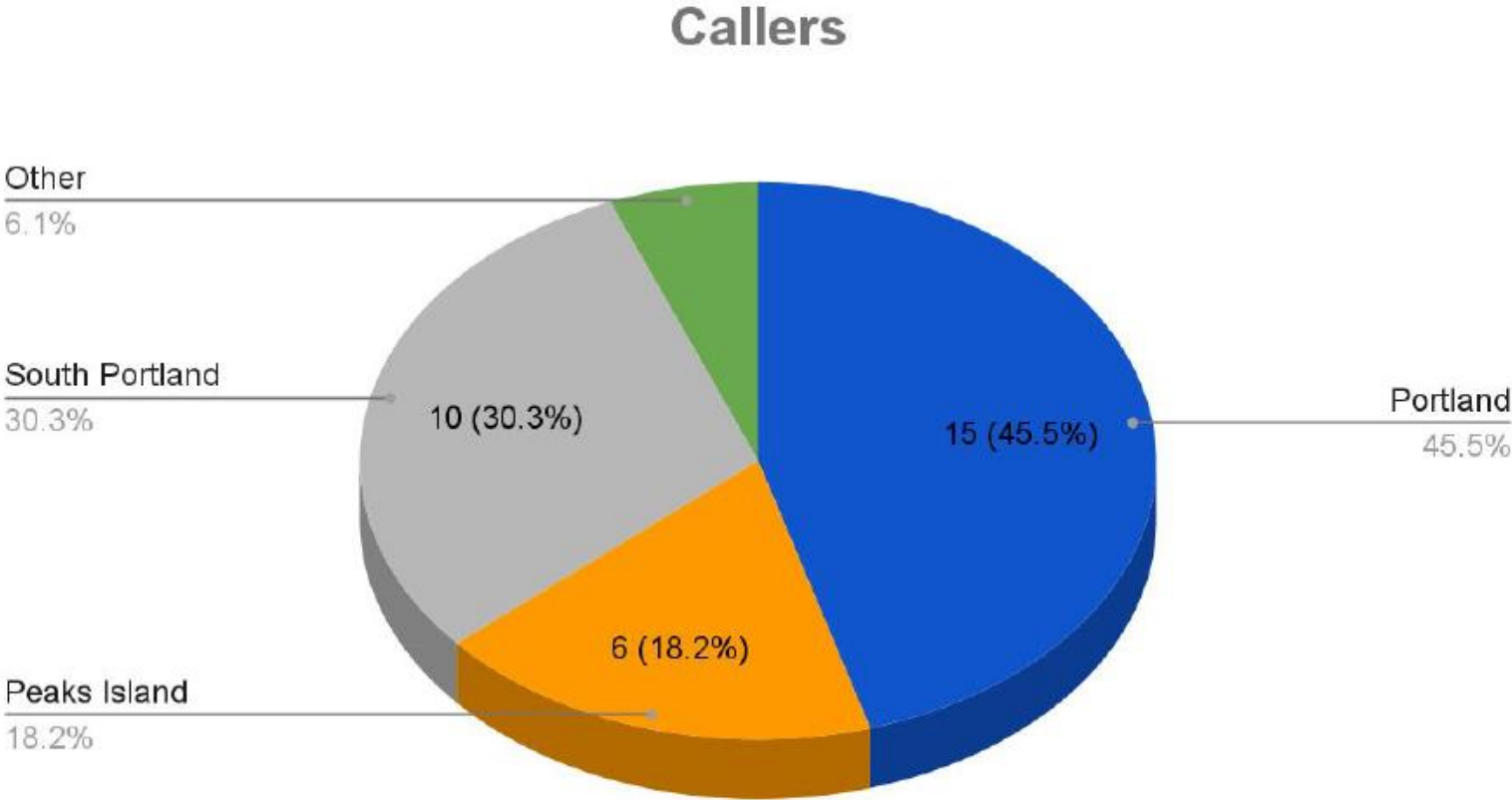
Noise **Reports** by
Neighborhood –
687 complaints since
Jan. 1, 2022

Portland: 102
Peaks Island: 531
South Portland: 41
Cape Elizabeth: 0
Scarborough: 0
Other: 13



5. Noise Data: Reporters by Neighborhood (January – February 2022)

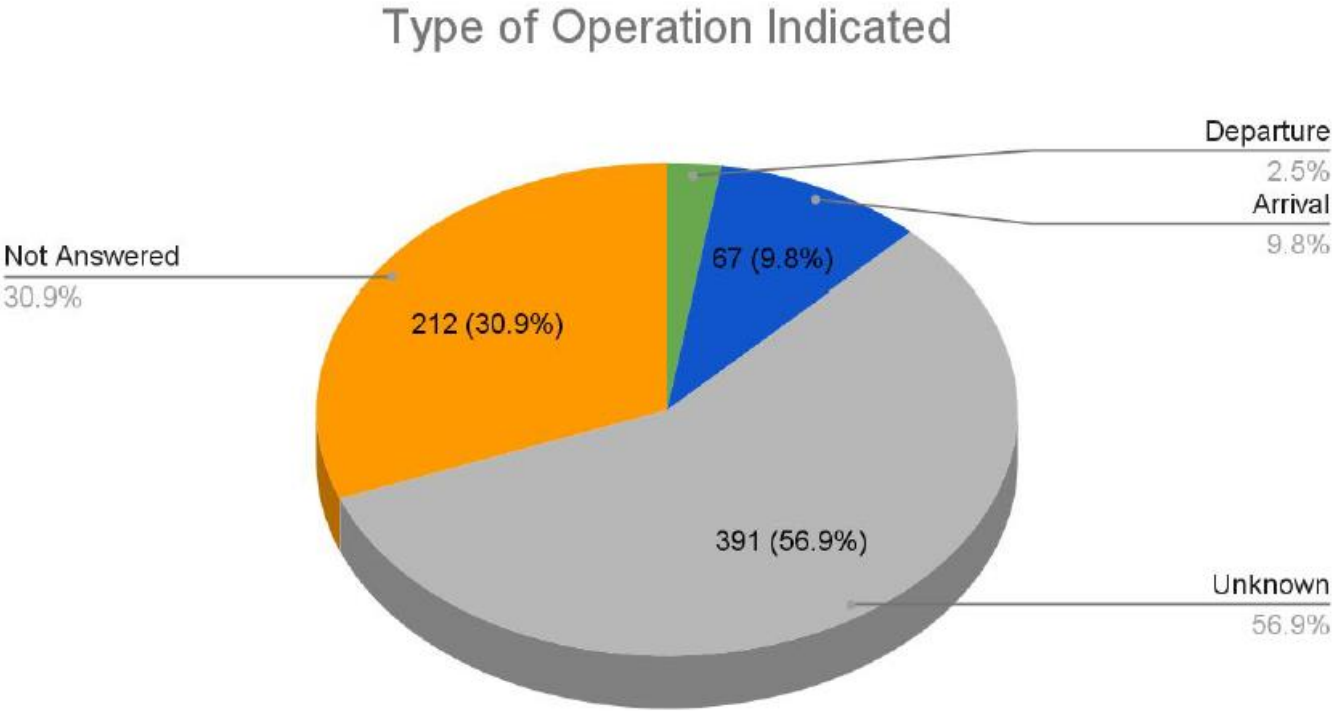
Noise **Reporters** by
Neighborhood –
56 Unique Callers
since Jan. 1, 2021



5. Noise Data: Operation Type Indicated (January – February 2022)

Noise **Reports** by Type
of Operation
since Jan. 1, 2022

Arrival: 67
Departure: 17
Unknown: 391
Not Answered: 212



5. Noise Data: Primary Runway Use

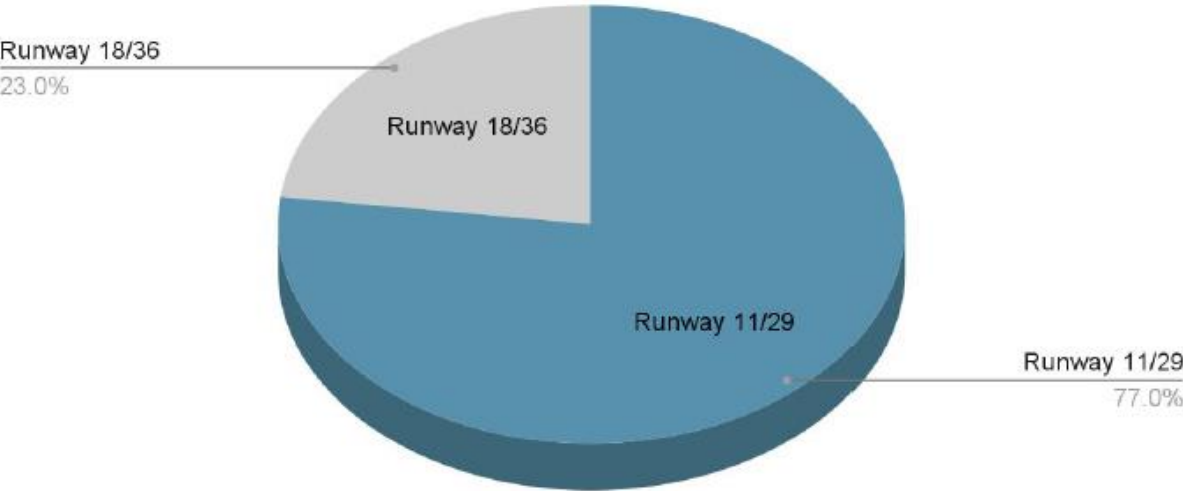
PWM Runway Operations													
2021	January	February	March	April	May	June	July	August	September	October	November	December	Total
11A	226	290	453	356									1325
11D	151	217	356	295									1019
18A	60	115	98	502									775
18D	31	78	89	449									647
29A	966	848	1012	560									3386
29D	1040	878	1069	615									3602
36A	158	57	173	488									876
36D	126	53	137	444									760
Total	2758	2536	3387	3709	0	0	0	0	0	0	0	0	12390
% Use of Primary Runway 2022	86%	88%	85%	49%									77%
% Use of Primary Runway 2021	80%	90%	74%	75%	73%	86%	100%	100%	94%	85%	84%	92%	86%

5. Noise Data: FedEx / Wiggins Runway Use

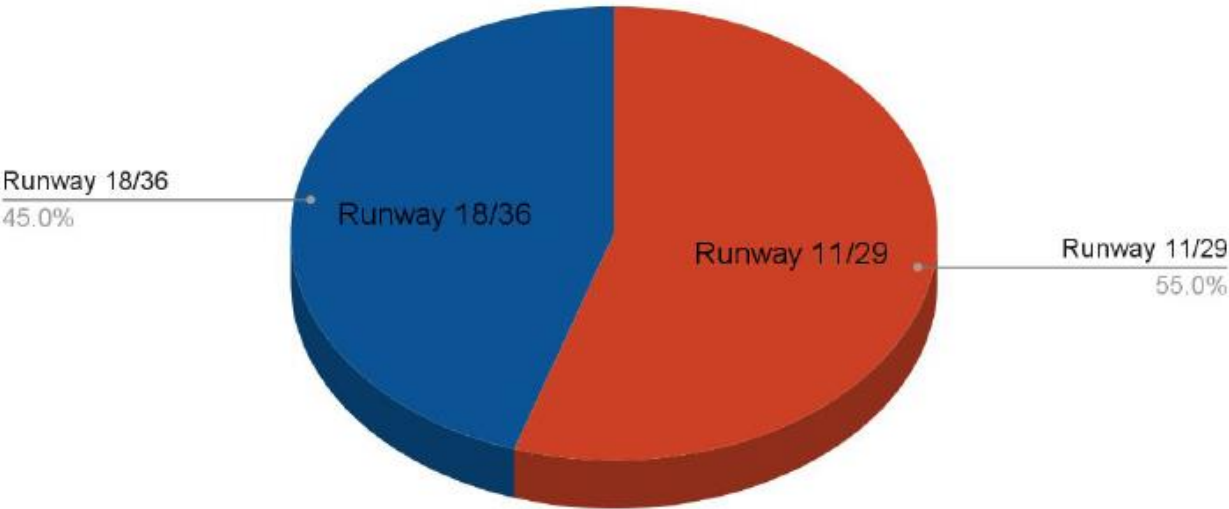
PWM Runway Operations													
2021	January	February	March	April	May	June	July	August	September	October	November	December	Total
11A	3	18	10	14									45
11D	4	8	7	7									26
18A	35	19	26	22									102
18D	2	3	1	11									17
29A	25	31	36	16									108
29D	30	36	62	24									152
36A	10	5	26	31									72
36D	18	11	22	32									83
Total	127	131	190	157	0	0	0	0	0	0	0	0	605
% Use of Primary Runway 2022	49%	71%	61%	39%									55%
% Use of Primary Runway 2021	48%	74%	56%	48%	51%	68%	100%	100%	82%	37%	58%	74%	66%

5. Noise Data: Runway Use January - March 2022

Total Runway Usage

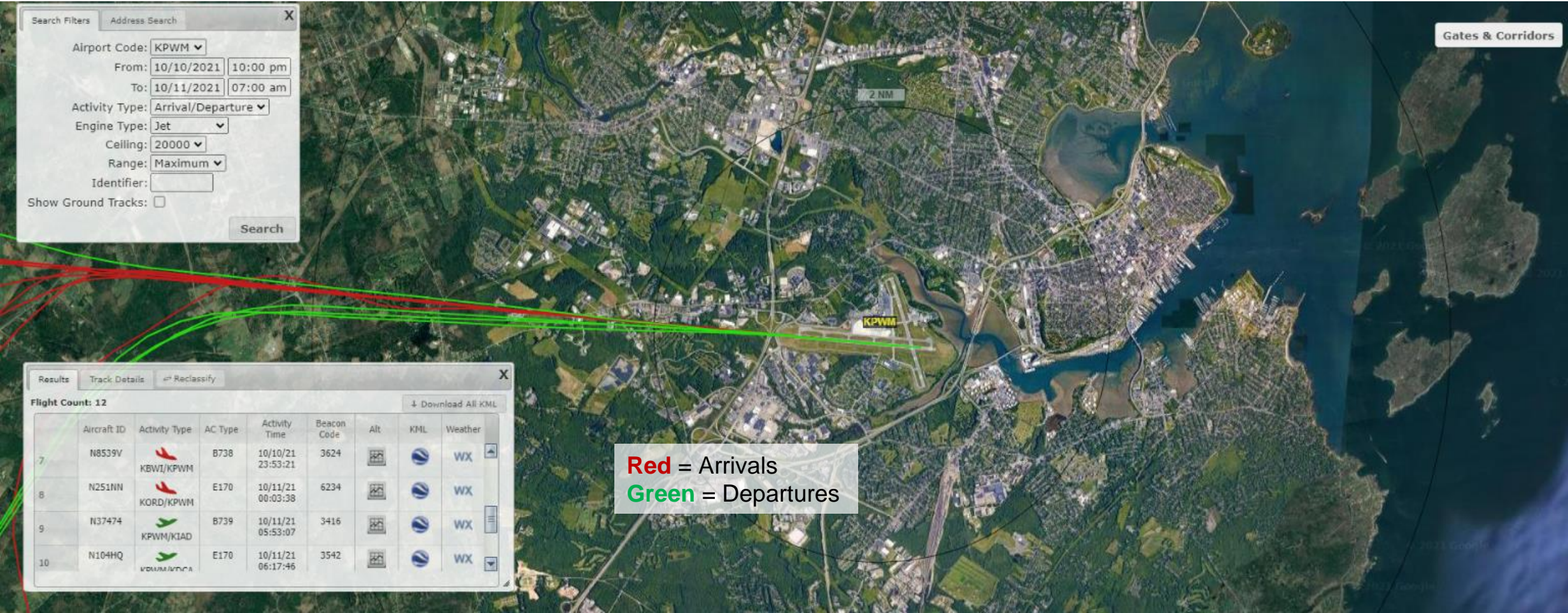


Wiggins Runway Usage



6. Noise Data: Runway Preference

PWM noise preference is to use Runway 11/29 and arrive from the west and depart to the west



5. Noise Data: Runway Preference March 2022 (Arrivals)

Runway Preference 2022 (Provides Data On Effectiveness To Approach From The West)

Arrivals Over South Portland		Arrivals Over Portland / West End		Arrivals Over Peaks Island		Arrivals Over Little Diamond		Arrivals Over Falmouth	
Arrivals	217	Arrivals	0	Arrivals	93	Arrivals	9	Arrivals	9
% of 11 / 29 Arrivals	35.46%	% of 11 / 29 Arrivals	0.00%	% of 11 / 29 Arrivals	15.20%	% of 11 / 29 Arrivals	1.47%	% of 11 / 29 Arrivals	1.47%

From West		From East		Total Arrivals	
Arrivals	239	Arrivals	373	Arrivals	612
% of 11 / 29 Arrivals	39%	% of 11 / 29 Arrivals	61%	% of 11 / 29 Arrivals	100%

Runway Preference 2022 (Noise Sensitive Hours 10pm-7am)

Arrivals Over South Portland		Arrivals Over Portland / West End		Arrivals over Peaks Island		Arrivals Over Little Diamond		Arrivals Over Falmouth	
Arrivals	69	Arrivals	0	Arrivals	3	Arrivals	0	Arrivals	0
% of 11 / 29 Arrivals	54.33%	% of 11 / 29 Arrivals	0.00%	% of 11 / 29 Arrivals	2.36%	% of 11 / 29 Arrivals	0.00%	% of 11 / 29 Arrivals	0.00%

From West		From East		Total	
Arrivals	55	Arrivals	72	Arrivals	127
% of 11 / 29 Arrivals	43%	% of 11 / 29 Arrivals	57%	% of 11 / 29 Arrivals	100%

Data Shown Represents Jet Aircraft Only

5. Noise Data: Runway Preference March 2022 (Departures)

Runway Preference 2022 (Provides Data On Effectiveness To Approach From The West)

Departures Over South Portland		Departures Over Portland / West End		Departures Over Peaks Island		Departures Over Little Diamond		Departures Over Falmouth	
Departures	16	Departures	4	Departures	69	Departures	58	Departures	71
% of 11 / 29 Departures	2.55%	% of 11 / 29 Departures	0.64%	% of 11 / 29 Departures	10.99%	% of 11 / 29 Departures	9.24%	% of 11 / 29 Arrivals	11.31%

To West		To East		Total	
Departures	425	Departures	203	Departures	628
% of 11 / 29 Arrivals	68%	% of 11 / 29 Arrivals	32%	% of 11 / 29 Arrivals	100%

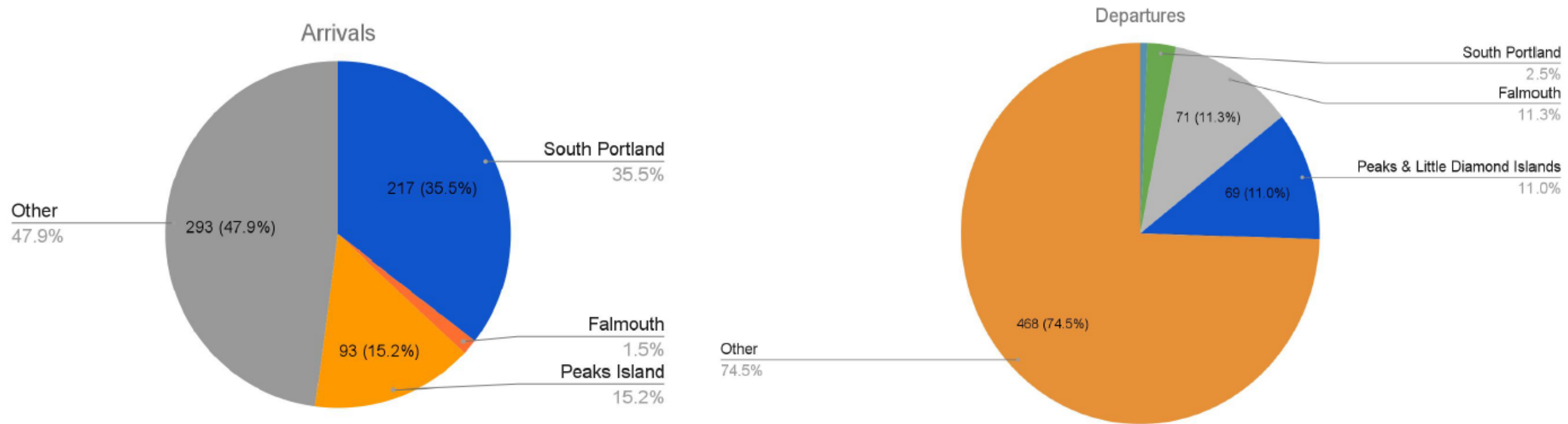
Runway Preference 2022 (Noise Sensitive Hours 10pm-7am)

Departures Over South Portland		Departures Over Portland / West End		Departures Over Peaks Island		Departures Over Little Diamond		Departures Over Falmouth	
Departures	4	Departures	0	Departures	12	Departures	9	Departures	13
% of 11 / 29 Departures	1.75%	% of 11 / 29 Departures	0.00%	% of 11 / 29 Departures	8.89%	% of 11 / 29 Departures	6.67%	% of 11 / 29 Arrivals	9.63%

To West		To East		Total	
Departures	106	Departures	29	Departures	135
% of 11 / 29 Departures	79%	% of 11 / 29 Departures	21%	% of 11 / 29 Departures	100%

Data Shown Represents Jet Aircraft Only

5. Noise Data: Runway Preference March 2022



Data Shown Represents Jet Aircraft Only

5. Noise Data: Harbor Visual Approach

Harbor Visual Approach Compliance								
April 4 - 10	**4/4**	4/5	4/6	4/7	**4/8**	**4/9**	4/10	Total
Number of Approaches of Eligible Aircraft	-	12	13	0	-	-	10	35
Number of Successful HVA	-	13	13	0	-	-	15	41
Percentage of Successful HVA	-	92%	100%	-	-	-	67%	86%

- * Denotes Partial Day Due to Weather Minimums
- ** Denotes HVA Unavailable Due to Weather Minimums
 - Wind Gusts exceed 25 MPH on 4/4
 - No arrivals from East on 4/7
 - Cloud Ceiling: Under 1,000'



Data Represents Jet Aircraft Only
HVA is only available during daytime hours

5. Noise Data: Runway Preference During Noise Sensitive Hours 10pm-7am

(Preference to depart to the West / arrive from the West)

Noise Data: NCP compliance 10pm – 7am								
April 4 - 10	4/4	4/5	4/6	4/7	4/8	4/9	4/10	Weekly Total
RWY 11 Arrivals	1	9	9	7	2	0	0	28
RWY 29 Departures	10	7	0	0	6	4	7	34
Total RWY Operations	19	17	19	16	15	10	14	110
% of Arrivals / Departures to and from west	58%	94%	47%	44%	53%	40%	50%	55%

Data Represents Jet Aircraft Only

5. Noise Data: RWY 11 Departures March 2022 (Early North / South)

Departures Over West End (Early North)		Departures over South Portland (Early South)	
Departures	4	Departures	6
% of 11 Departures	0.94%	% of 11 Departures	1.41%

To West		To East		Total	
Departures	425	Departures	203	Arrivals	628
% of 11 / 29 Departures	68%	% of 11 / 29 Departures	32%	% of 11 / 29 Departures	100%

Data Shown Represents Jet Aircraft Only

5. Noise Data: Departures over West End / Early North Reasoning

1.	4/3/2022	5:29PM	N506AE	PWM-DCA: No information available
2.	4/6/2022	6:34PM	N918XJ	PWM-LGA: ATC provided standard departure clearance
3.	4/9/2022	11:06AM	N502GJ	PWM-EWR: No information available
4.	4/14/2022	6:02AM	N209SY	PWM-ORD: Filed HSKEL 3, advised to fly heading 080 due to traffic

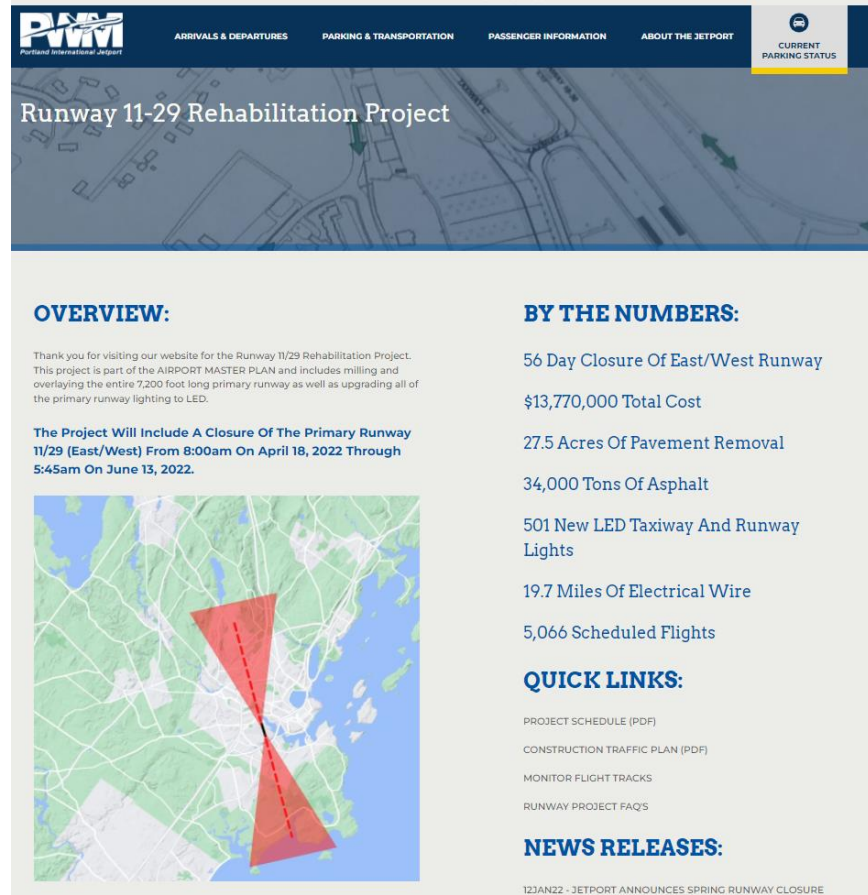
Wind Was Not A Factor During These Operations

6. Old Business Item: Update on Runway 11/29 Rehabilitation Project

BY THE NUMBERS:

- \$13,770,000 Total Cost
- 27.5 Acres of Pavement Removal
- 34,000 Tons of Asphalt
- 501 New LED Taxiway and Runway Lights
- 19.7 Miles of Electrical Wire
- 5,066 Scheduled Flights

For more information visit:
<https://portlandjetport.org/runway>




The screenshot shows the Portland International Jetport (PWM) website. The header includes the PWM logo and navigation links: ARRIVALS & DEPARTURES, PARKING & TRANSPORTATION, PASSENGER INFORMATION, ABOUT THE JETPORT, and CURRENT PARKING STATUS. The main heading is "Runway 11-29 Rehabilitation Project".

OVERVIEW:

Thank you for visiting our website for the Runway 11/29 Rehabilitation Project. This project is part of the AIRPORT MASTER PLAN and includes milling and overlaying the entire 7,200 foot long primary runway as well as upgrading all of the primary runway lighting to LED.

The Project Will Include A Closure Of The Primary Runway 11/29 (East/West) From 8:00am On April 18, 2022 Through 5:45am On June 13, 2022.



BY THE NUMBERS:

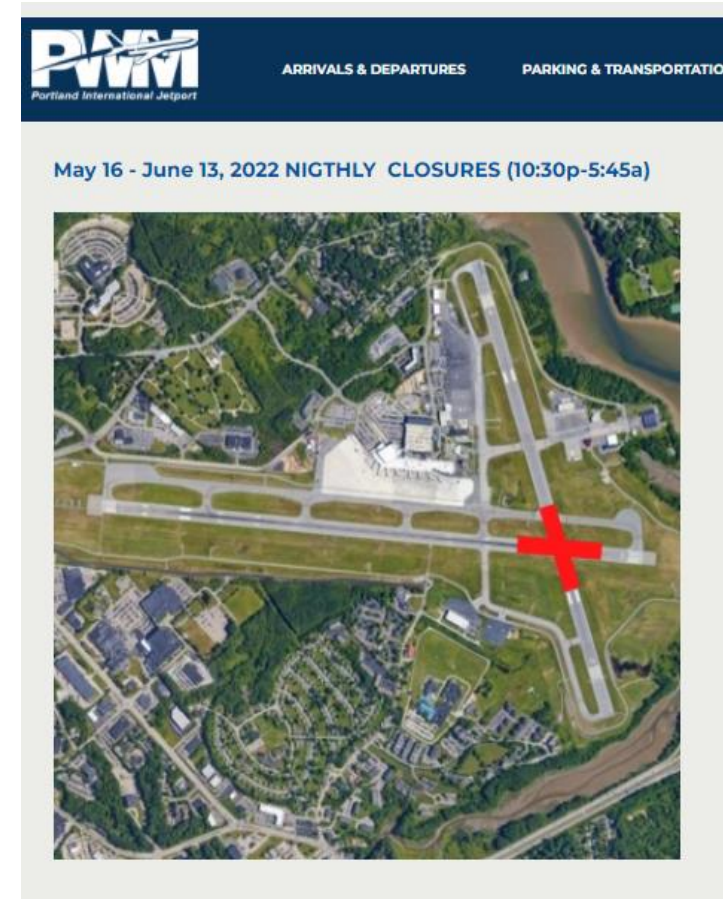
- 56 Day Closure Of East/West Runway
- \$13,770,000 Total Cost
- 27.5 Acres Of Pavement Removal
- 34,000 Tons Of Asphalt
- 501 New LED Taxiway And Runway Lights
- 19.7 Miles Of Electrical Wire
- 5,066 Scheduled Flights

QUICK LINKS:

- PROJECT SCHEDULE (PDF)
- CONSTRUCTION TRAFFIC PLAN (PDF)
- MONITOR FLIGHT TRACKS
- RUNWAY PROJECT FAQ'S


NEWS RELEASES:

123JAN22 - JETPORT ANNOUNCES SPRING RUNWAY CLOSURE



The screenshot shows the Portland International Jetport (PWM) website. The header includes the PWM logo and navigation links: ARRIVALS & DEPARTURES, PARKING & TRANSPORTATION, and CURRENT PARKING STATUS. The main heading is "Runway 11-29 Rehabilitation Project".

May 16 - June 13, 2022 NIGHTLY CLOSURES (10:30p-5:45a)



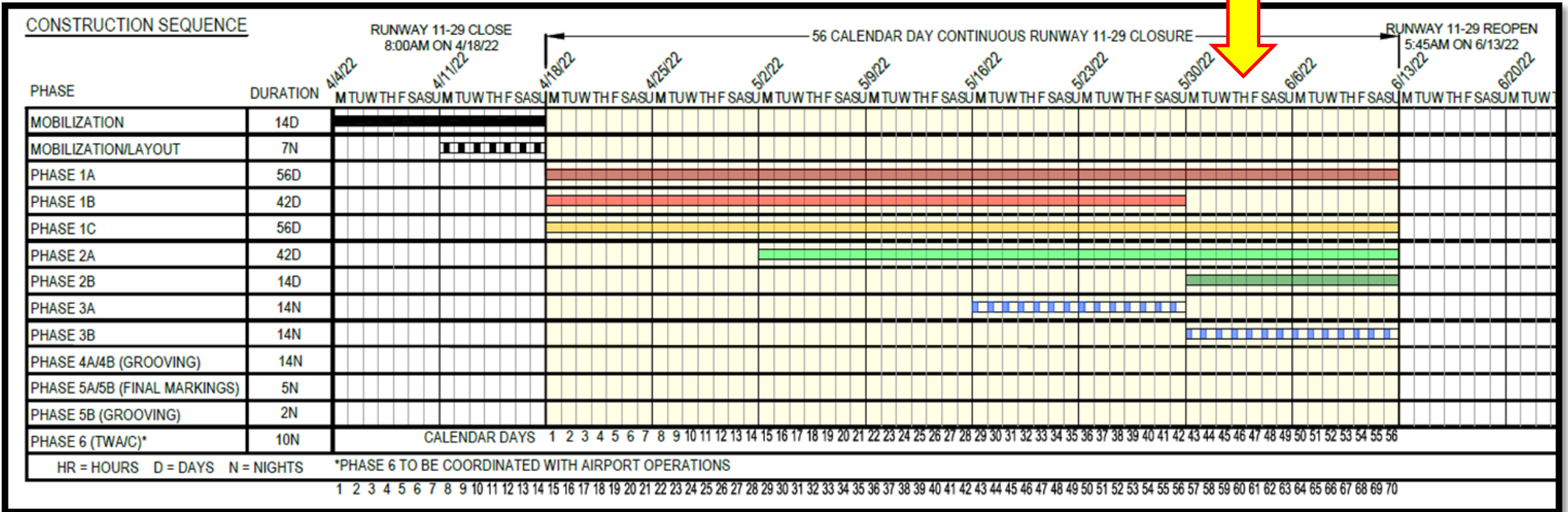
123JAN22 - JETPORT ANNOUNCES SPRING RUNWAY CLOSURE

[illegible]

For more information visit <https://portlandjetport.org/runway>

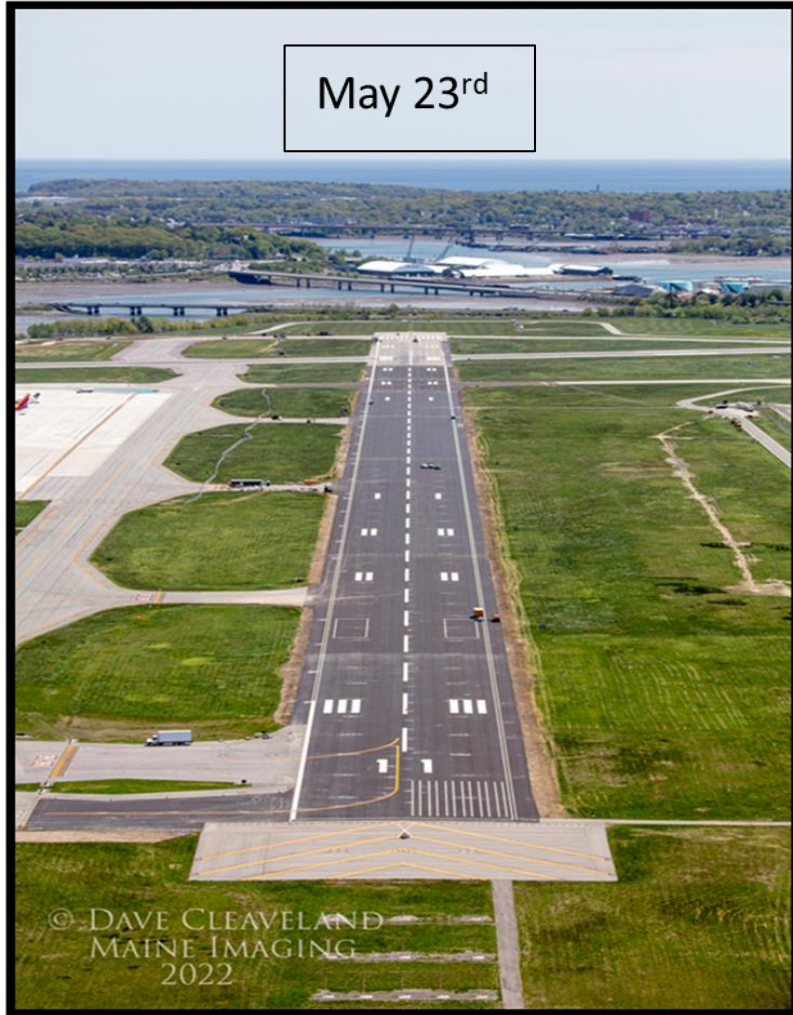
6. Old Business Item: Update on Runway 11/29 Rehabilitation Project

June 2nd

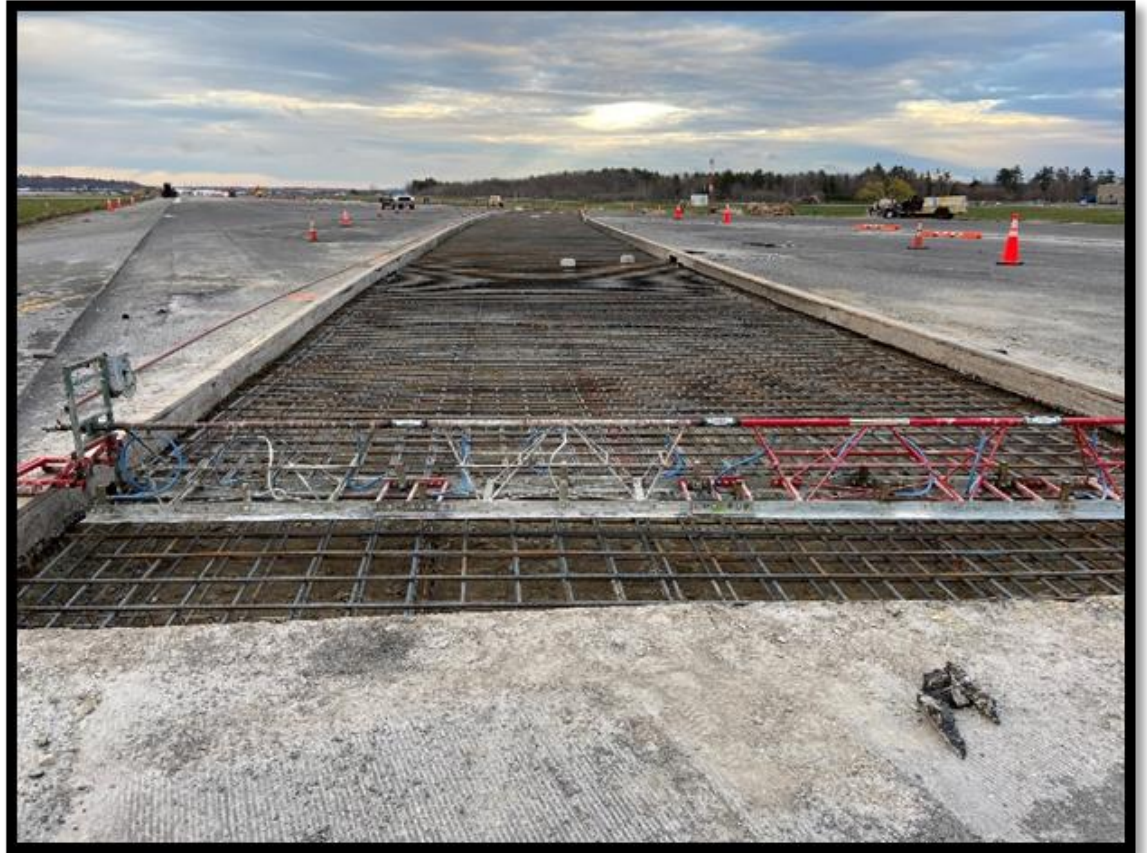


For more information visit <https://portlandjetport.org/runway>

6. Old Business Item: Update on Runway 11/29 Rehabilitation Project



6. Old Business Item: Update on Runway 11/29 Rehabilitation Project



24" Pipeline Protection Slab

6. Old Business Item: Update on Runway 11/29 Rehabilitation Project



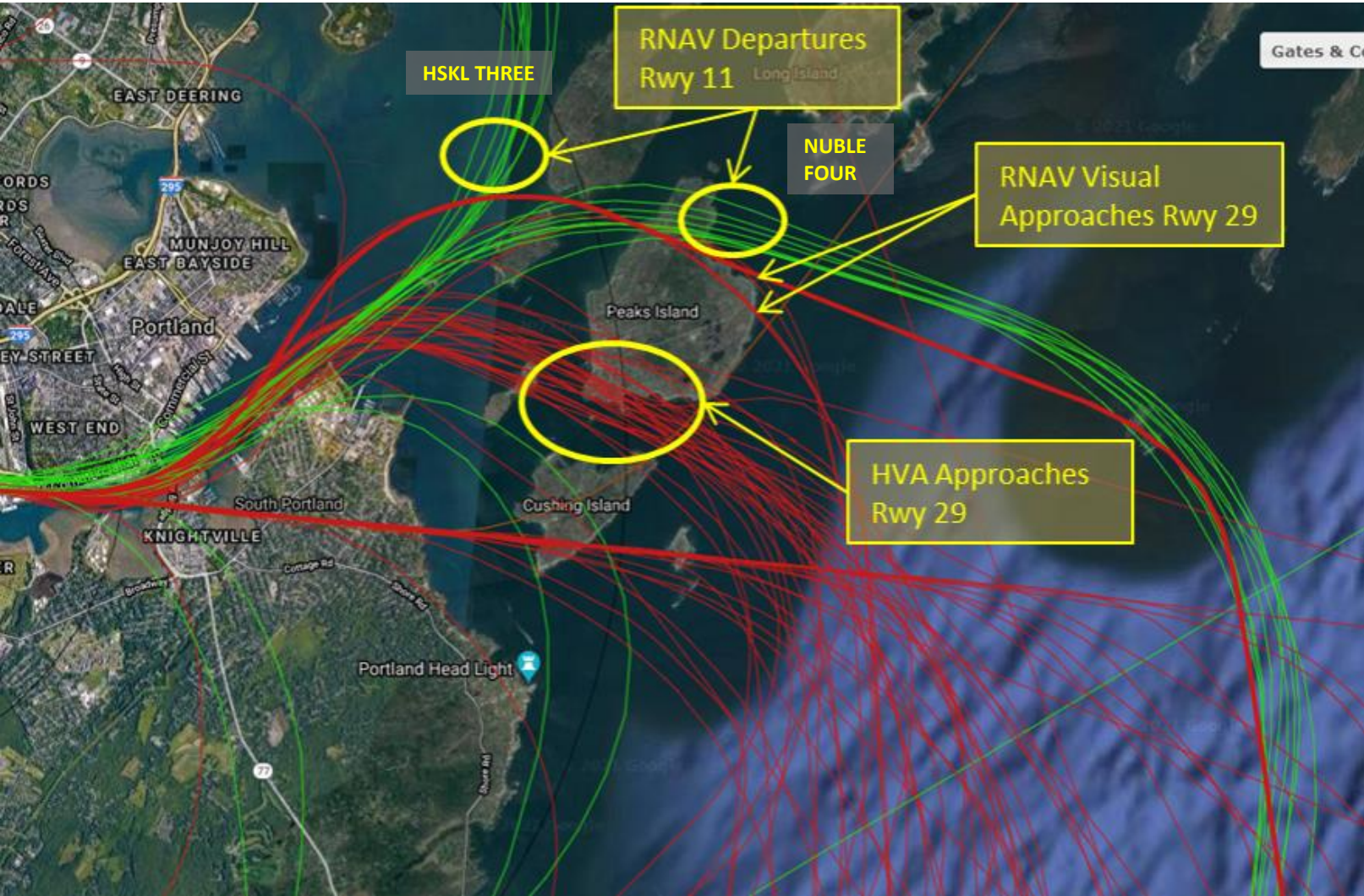
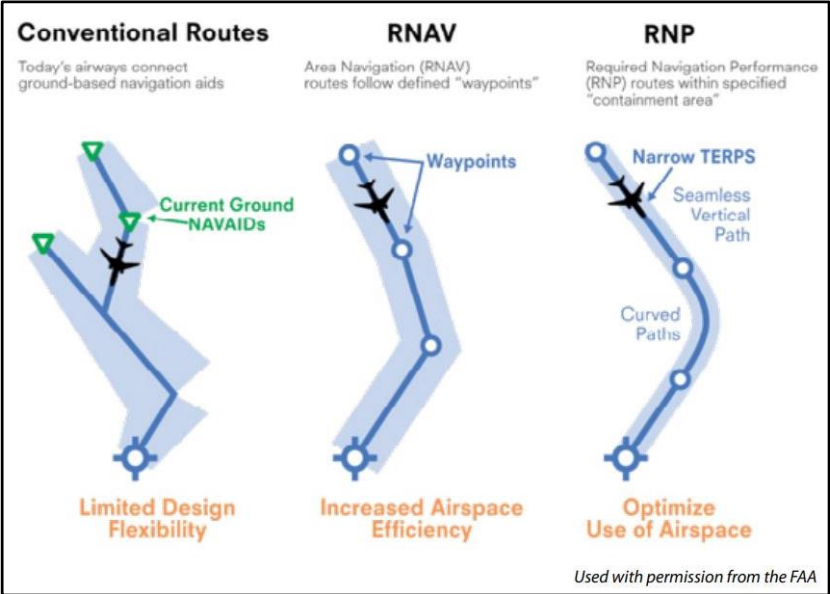
Runway Centerline Light Installation

6. Old Business Item: Update on Runway 11/29 Rehabilitation Project



Striping & Paving

7. New Business: The NAC will review recommendations prepared by the subcommittee established by the NAC at its April 7, 2022 meeting to provide recommendations on a proposal submitted by: Peaks Island Council- Flight Path Committee, Little Diamond Island Association, and the Western Promenade Neighborhood Association



7. New Business: The NAC will review recommendations prepared by the subcommittee established by the NAC at its April 7, 2022 meeting to provide recommendations on a proposal submitted by: Peaks Island Council- Flight Path Committee, Little Diamond Island Association, and the Western Promenade Neighborhood Association

RECOMMENDATIONS OF SUB-COMMITTEE TO NAC RE RNP DEVELOPMENT AND RNAV VISUAL SPECIAL

The members of the Special Sub-Committee agree that all arrivals from the East to Runway 29, and all departures toward the East, should be made, as much as possible, over water so as to minimize the noise impact on both Portland and South Portland neighborhoods.

The Sub-Committee further agrees that flights using the ILS Pathway from Ram Island lighthouse or the so-called Southwest RNAV Visual Special approach over Peaks Island are sub-optimal in terms of noise impact, and that neither approach should be used as the basis for a new Required Navigation Performance (“RNP”).

The Sub-Committee recommends that the NAC formally request that a Subject Matter Expert be engaged by the airport to opine as to the options available and the preferable (least noise impact) routes for the arrival RNP from the East and the departure RNP toward the East.

Finally, the Sub-Committee requests that the airport assist in the development of new analysis tools (possibly using the Excel spreadsheet approach presented by South Portland resident Julie Shane) to document deviations from prescribed flightpaths, including, without limitation, the arrival HVA approach and all departures toward the East.

9. Closing Questions / Public Comment

- For public comment, you will need to use the “raise your hand” feature in Zoom so you can be recognized by the host. Telephone participants can dial *9 to raise their hand.
- Please state your name and address for the record.

9. Next Meeting:

Committee will consider whether to schedule a meeting in June. Proposed date would be Thursday, September 29, 2022 at 6:00 pm

10. Adjournment



***Maine's
Home
Airport.***