

Date	Start	End	Next Meeting	Next Time	Prepared By	Company
4/26/2016	6:00pm	7:15pm	10/20/16	6pm	J. Dunfee	PWM

Attended By	Absentees
Mike Foley – Westbrook City Councilor	Jerry Morton – Western Promenade Rep
Mark Collins – FAA ATC	Sherrie Benner – Gorham Town Councilor
Guy Gledhill – Scarborough Town Council Representative	
Cheryl Miner – Peaks Island Council Representative	PWM Representatives
Tom Ainsworth – Stroudwater Village Association Rep	Paul Bradbury – Airport Director
Ed Suslovic – Portland City Council / NAC Chair	Brad Wallace – Operations Manager
Katherine Hughes – Air Carrier Station Manager Rep	Jennifer Dunfee – Assistant Operations Manager
Adrian Dowling – South Portland Representative	
Jerry Angier – Greater Portland Chamber of Commerce	Non-Member Attendees
Brad Fox – South Portland City Councilor	Lee Harvey – South Portland Resident
Bob Corp – Air Cargo Station Manager Representative	

Opening Remarks – Councilor Suslovic

- Meeting was called to order by Councilor Suslovic
- Welcome to all members and guests
- Motion to approve previous meeting's minutes dated 10/29/2015 passed without objection
- Eastern Air Traffic Control District Manager Bob Jones addressed the committee regarding the FAA's investment in communities in which it operates, particularly with respect to 'NextGen' approaches and unintended consequences throughout the region.

Jetport in the News –

- Paul briefed the committee on the latest public press releases affecting the Jetport and its airlines
- Paul reviewed with the committee an update on the Sustainable Airport Master Plan (SAMP) available at <http://thejetport.airportstudy.com/>

Airline Schedule Update – Jen Dunfee

- Refer to attached handout reviewing flight schedules
 - Most notable change to the schedule is Southwest's flight that departs 5:15 a.m. backed up from 5:45 a.m. through the summer. This change is effective as of June 6th.

PWM Noise Statistics – Jennifer Dunfee

- Reviewed PWM Noise Statistics for (see attached presentation).
- Discussion about the Wiggins Airways C208 FedEx aircraft use of runway 18/36. The airport will continue to work with FedEx / Wiggins and report monthly on their efforts of primary runway usage.

Community Outreach Sessions

- The Jetport Noise Team is ready to schedule a community meeting whenever one is requested.

Announcements

- Maine Aviation / MacAir Group is due to be up and running as a Fixed Based Operator in June.
- Inland Technologies Inc. is in the process of completing a facility on campus that will allow for the collection, processing and resale of de-ice fluid. They continue to receive and process chemical from PWM as well as from other airports in the region.
- Old General Aviation Terminal has been demolished.
- Northeast Airmotive's construction renovation is under way.

Questions

- Adrian inquired about a schedule for a next Part 150 study. Paul reported that the airport's noise contours forecasted in the prior Part 150 have not been reached nor has the airport's forecast operations under the last environmental assessment been reached.

Meeting adjourned at 7:15pm. Next meeting is scheduled for Thursday, October 20th at 6pm.

Portland International Jetport Noise Advisory Committee Meeting



AGENDA

1. Welcome / Introduction New Members
2. Approval of Minutes
3. Jetport in the News / Updates
 - A. Sustainable Airport Master Plan
4. Old Business
 - A. Noise Report Statistics
 - B. Community Outreach Sessions
5. New Business
6. Announcements
7. Questions / Public Comment
8. Next Meeting
9. Adjournment

Portland Press Herald

Destination or departure, Portland's on the itinerary for summer travelers

By land, air or sea, come summer there

BY EDWARD D. MURPHY STAFF WRITER
emurphy@pressherald.com | 207-791-6465

Share      Comment

Local transportation options are expanding this summer. Travelers can take a train from Baltimore from the Portland International Jetport. The train runs between Ogunquit and New York City beginning in June.

The sailing schedule and fares of a summer ferry service are also taking shape, even as the city continues to plan for the summer season.



Travelers at the Portland Jetport will find additional Southwest flight to Baltimore available through Nov. 4.

Southern
daily
Inter
fligh

The
at 9 a.
a.m.,
Balti
Portl
four
the s

Portland Press Herald

BUSINESS Posted March 9 | Updated March 9

Portland jetport plan envisions more gates, amenities, passengers

A 20-year plan calls for \$312 million worth of upgrades to serve nearly 40 percent more passengers.

STAFF REPORTS

Share      45 Comments

The Portland International Jetport would get new gates, more large airliners and a host of upgrades under a 20-year, \$312 million master plan that envisions the airport accommodating nearly 40 percent more passengers than it currently handles.

The plan outlines what the jetport should look like in 2036 after the improvements. A funding plan for the first project on that time line – a bigger apron to accommodate larger airliners already using the jetport's gates – comes before the City Council on March 21.

Proposed changes at the Portland International Jetport



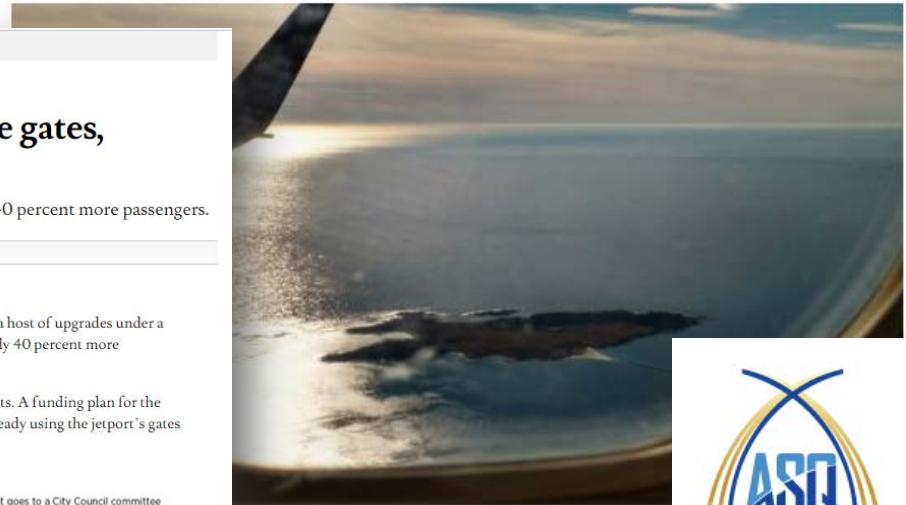
SOURCE: Portland International Jetport

2015 PRESS-HERALD FILE PHOTO BY GABRIEL

BDN
MAINE

Portland

Portland Jetport to add direct flights to Bar Harbor, Long Island



Portland, as seen from a plane landing at the Portland International Jetport.



CNBC
ROAD WARRIOR

These airports win at customer service: Survey

Harriet Baskas, Special to CNBC
Sunday, 6 Mar 2016 | 1:00 PM ET

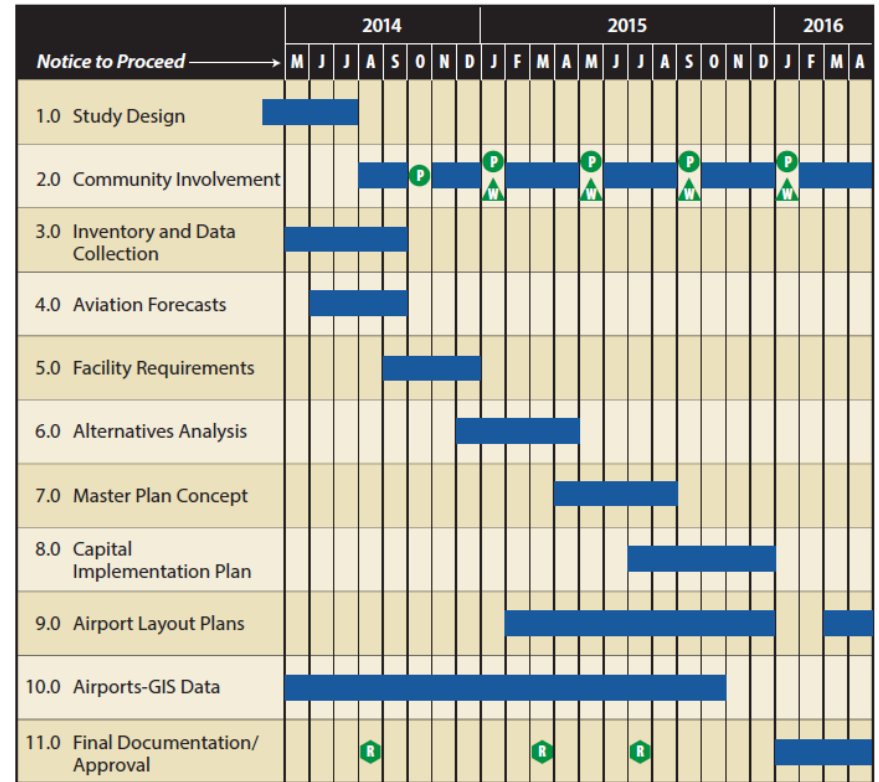


Best Airport
in North America

SUSTAINABLE AIRPORT MASTER PLAN



Estimated Project Schedule for the PORTLAND INTERNATIONAL JETPORT SUSTAINABLE AIRPORT MASTER PLAN



LEGEND

- Planning Advisory Committee Meeting
- Public Workshop
- Review/Coordination Meeting

SUSTAINABLE AIRPORT MASTER PLAN

Sustainable Airport Master Plan

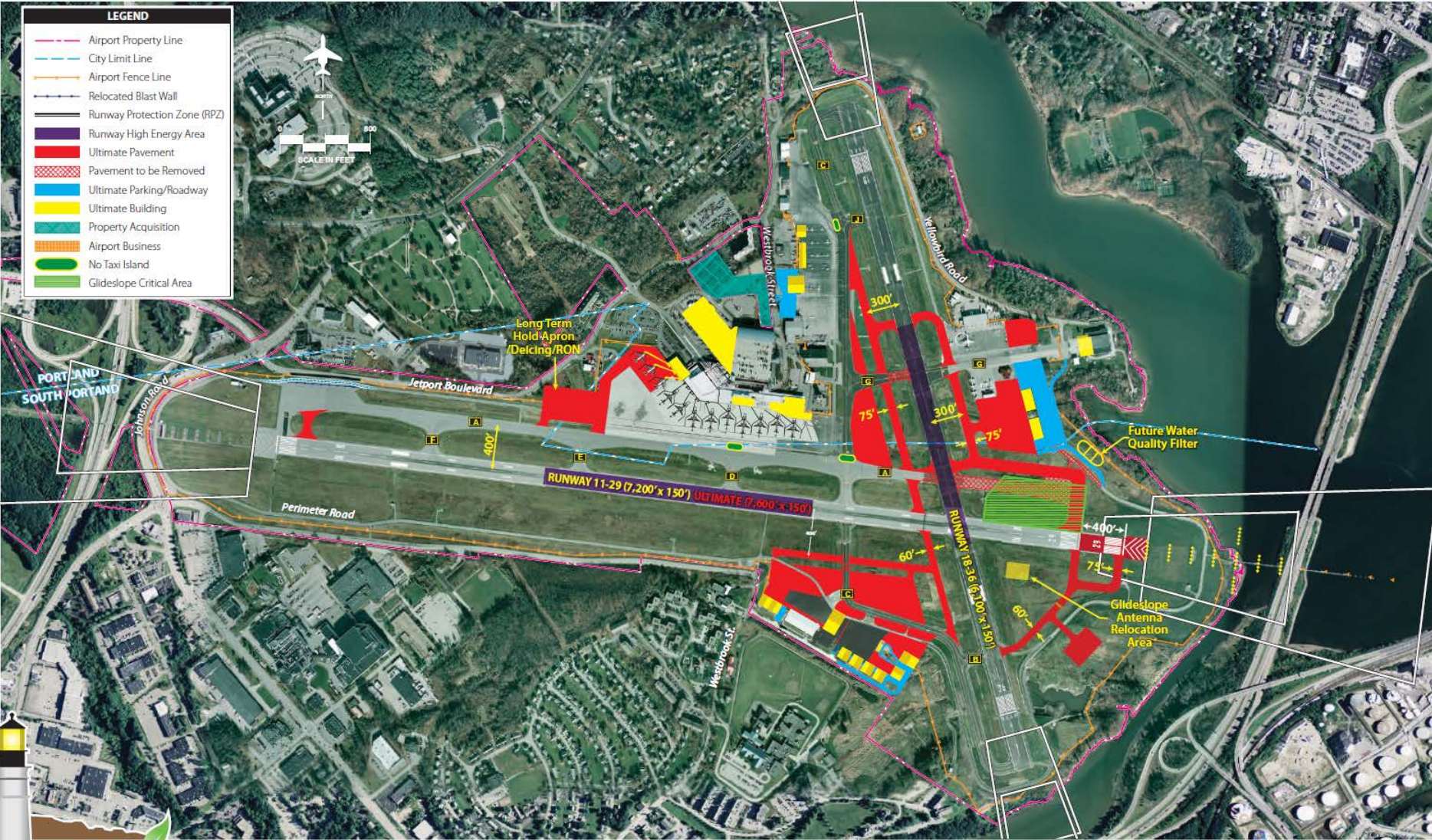


Exhibit 6A

RECOMMENDED DEVELOPMENT CONCEPT

OLD BUSINESS – AIRLINE SCHEDULE UPDATE

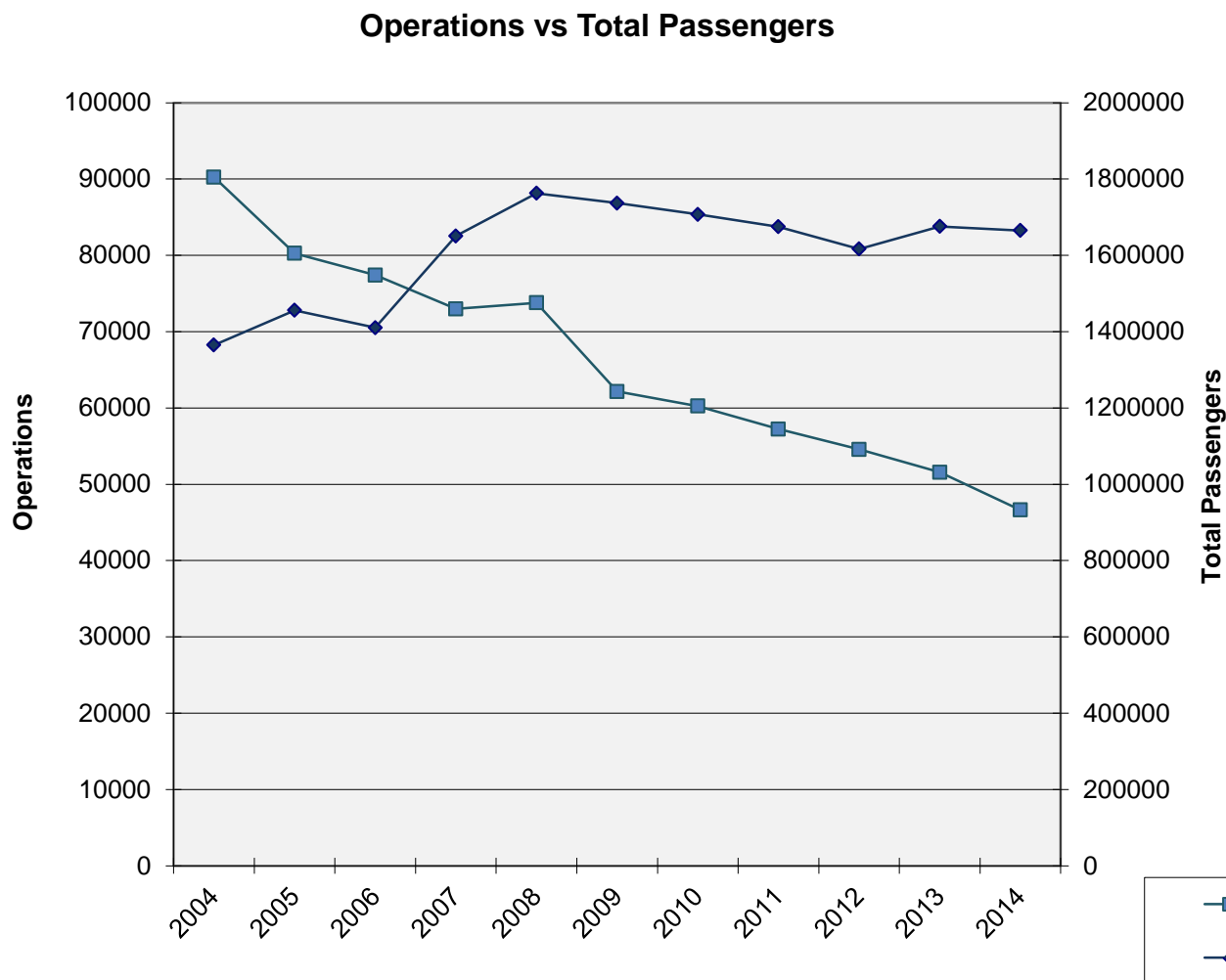
PWM will continue to report to the Committee changes in the airline schedule that occur during noise sensitive hours
10pm-7am according to the FAA Day Night Average Sound Level (DNL) calculations.

- May – 9 flights operate during noise sensitive hours
- Jun – 9 flights operate during noise sensitive hours
- Jul – 11 flights operate during noise sensitive hours

PWM Noise Sensitive hours according to the Record of Approval is 11:30 p.m. – 6:15 a.m.



OLD BUSINESS – TOTAL OPERATIONS VS TOTAL PASSENGERS



2015 Totals

Total Operations 46,199↓

Total Passengers 1,739,906↑

2014 Totals

Total Operations 46,633↓

Total Passengers 1,665,209 ↓

2013 Totals

Total Operations 51,568↓

Total Passengers 1,675,978↑

2012 Totals

Total Operations 54,566↓

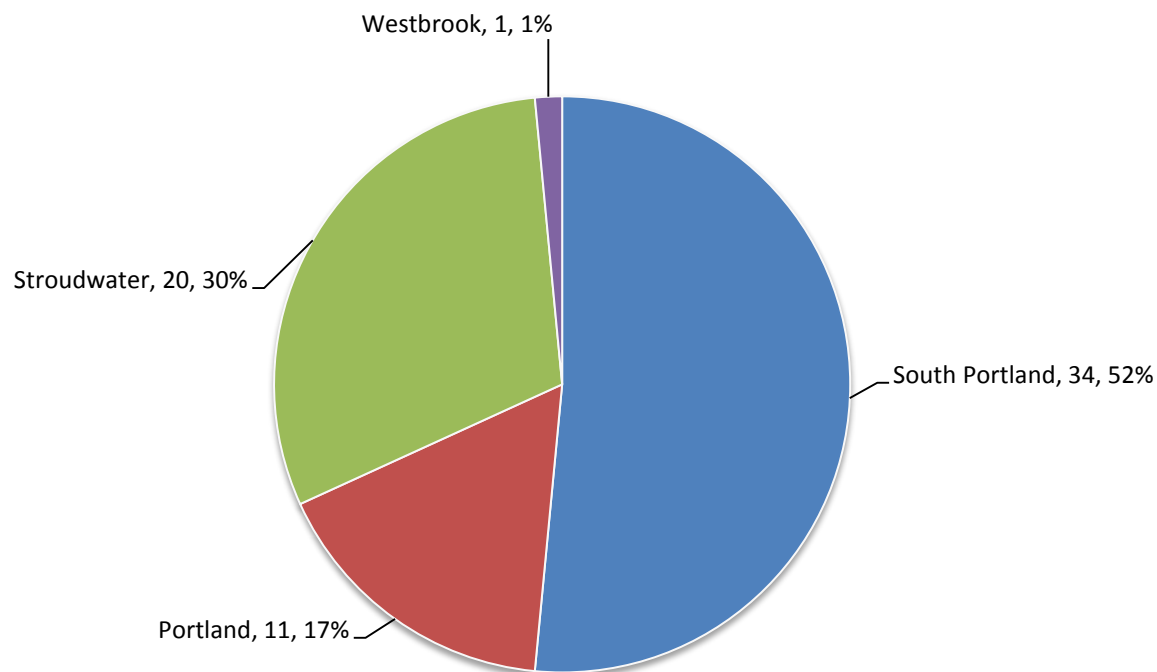
Total Passengers 1,616,723↓

OLD BUSINESS – REPORTS VS REPORTERS

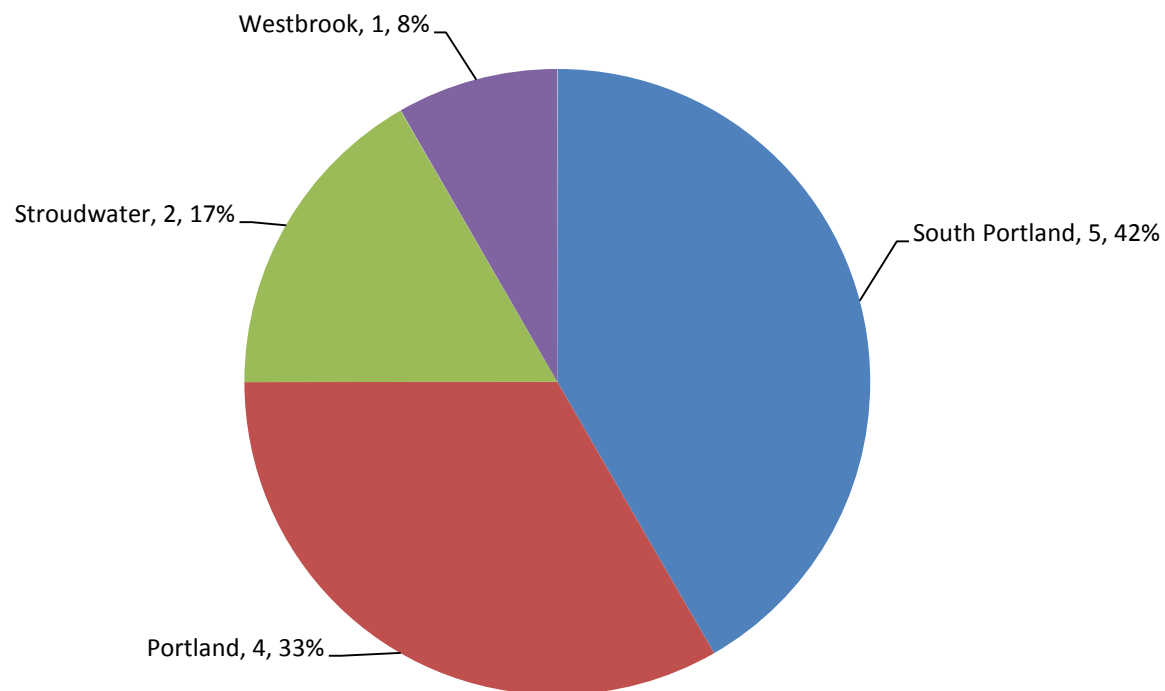
Noise Reports vs Reporters

		Jan	Feb	Mar	Apr	May	Jun	Jul	Aug	Sep	Oct	Nov	Dec
2008	Report	30	33	69	105	108	76	80	97	62	49	42	36
	Reporter	4	4	5	3	4	16	14	10	7	8	5	6
2009	Report	20	41	18	49	61	63	100	132	72	43	38	43
	Reporter	4	7	5	9	12	14	16	13	12	6	4	5
2010	Report	14	17	16	39	19	2	42	93	20	4	2	1
	Reporter	2	4	2	2	2	2	16	16	5	1	2	1
2011	Report	0	0	2	24	165	160	289	299	89	18	6	1
	Reporter	0	0	1	3	4	5	10	11	5	2	2	1
2012	Report	3	0	0	6	1	13	22	52	1	3	2	1
	Reporter	0	0	0	2	1	7	8	10	1	3	2	1
2013	Report	0	0	4	9	10	15	13	22	20	2	1	4
	Reporter	0	0	4	3	5	4	4	11	8	2	1	1
2014	Report	6	26	32	31	24	42	59	44	19	19	7	28
	Reporter	1	2	4	7	6	13	12	25	9	6	2	3
2015	Report	7	7	13	28	38	46	75	49	78	43	2	2
	Reporter	1	2	4	4	7	8	9	15	13	7	2	2
2016	Report	11	8	21	26								
	Reporter	4	5	4	7								

Noise Reports Per Neighborhood



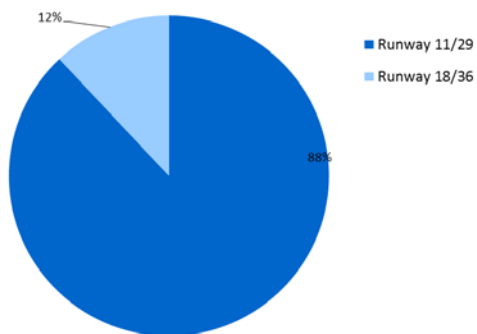
Noise Reporters Per Neighborhood



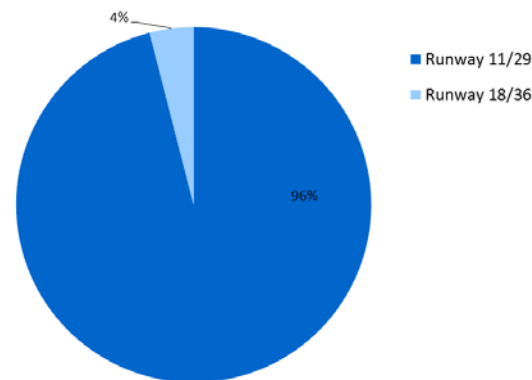
OLD BUSINESS – PRIMARY RUNWAY USAGE ALL TRAFFIC YEAR END 2015

	PWM Commercial & G.A. Operations												
2015	January	February	March	April	May	June	July	August	September	October	November	December	Totals
11A	171	373	322	756	866	1170	1416	1151	1034	787	569	532	9147
11D	105	206	183	462	585	879	1211	1173	927	729	772	923	8155
18A	8	22	49	99	146	166	151	137	132	66	81	30	1087
18D	19	18	66	135	295	382	301	282	269	280	202	88	2337
29A	1000	573	952	763	626	695	1104	820	768	1049	820	784	9954
29D	1087	702	1070	845	837	728	989	876	832	948	760	714	10388
36A	30	20	92	114	50	59	90	49	71	148	71	53	847
36D	37	27	63	107	63	52	87	60	89	155	72	60	872
Total	2457	1941	2797	3281	3468	4131	5349	4548	4122	4162	3347	3184	42787
% Use of Primary Runway	96%	96%	90%	86%	84%	84%	88%	88%	86%	84%	87%	93%	88%

YTD Operations - ALL



YTD Operations – Commercial



OLD BUSINESS – PRIMARY RUNWAY USAGE ALL TRAFFIC YTD 2016

	PWM Commercial & G.A. Operations												
2016	January	February	March	April	May	June	July	August	September	October	November	December	Totals
11A	261	317	638										1216
11D	653	385	678										1716
18A	21	37	67										125
18D	56	77	127										260
29A	816	744	673										2233
29D	716	653	629										1998
36A	55	49	70										174
36D	49	34	71										154
Total	2627	2296	2953	0	0	0	0	0	0	0	0	0	7876
% Use of Primary Runway	93%	91%	89%	#####	#####	#####	#####	#####	#####	#DIV/0!			91%

OLD BUSINESS – RUNWAY USAGE – WIGGINS AIRWAYS (FEDEX)

		Operations	Percentage
2008	Rwy 18/36	453	26%
	Rwy 11/29	1274	74%
2009	Rwy 18/36	688	35%
	Rwy 11/29	1306	65%
2010	Rwy 18/36	526	24%
	Rwy 11/29	1623	76%
2011	Rwy 18/36	562	20%
	Rwy 11/29	2202	80%
2012	Rwy 18/36	62*	12%
	Rwy 11/29	474*	88%
2013	NO DATA AVAILABLE		
2014	Rwy 18/36	373	29%
	Rwy 11/29	1268	71%
2015	Rwy 18/36	807	46%
	Rwy 11/29	949	54%
Jan - Mar 2016	Rwy 18/36	146	33%
	Rwy 11/29	292	67%



* Partial year's data due to runway closure

- Part of PWM's Noise Compatibility Plan
- Notify PWM of community meeting dates and times so we may attend
- Recent community meetings
 - Jul 2011 – South Portland
 - Jun 2012 – Peaks Island
 - Oct 2012 – Stroudwater Village Association
 - Sep 2013 – South Portland
 - April 15, 2015 – Peaks Island Community
 - May 28, 2015 – South Portland

ANNOUNCEMENTS

Please State Your Name & Address for the Record



Thank you