



# Noise Advisory Committee Meeting October 29, 2020 at 6pm via WebEx

PWW PORTLAND INTERNATIONAL  
**JETPORT**

## JOIN WEBEX MEETING:

<https://portlandinternationaljetport.my.webex.com/portlandinternationaljetport.my/j.php?MTID=mba9c431b6de6913b44b129264cf17f14>

Meeting number (access code): **132 533 0261**

Password: **JRh8N6D59Ra** (57486635 from phones and video systems)

Join by phone: +1-408-418-9388 United States Toll

Tap to join from a mobile device (attendees only)  
[+1-408-418-9388](tel:+14084189388), [1325330261#57486635#](https://portlandinternationaljetport.my.webex.com/join?MTID=mba9c431b6de6913b44b129264cf17f14)

Need help? Go to <http://help.webex.com>

## AIRPORT SERVICE QUALITY AWARDS INDUSTRY RECOGNITION OF THE BEST AIRPORTS IN THE WORLD

The Airport Service Quality Awards are the industry's most prestigious accolades. The awards recognise the airports which have achieved the highest passenger satisfaction ratings in the 'ASQ Survey'—the world's benchmark measure of airport excellence.



# Agenda: NAC Meeting October 29, 2020

---

1. Welcome / WebEx Meeting Information/Process
2. Opening Questions/ Public Comment (15 minutes)
3. Approval of Minutes for the May 20, 2020 Meeting (Link to [Draft Minutes](#) and [Meeting Presentation](#))
4. Jetport Operating Statistics: Passenger volumes, capacity, # operations, and COVID Impact
5. Noise Data: January through September 2020 noise report tabulations
6. Old Business:
  - A. Review and discussion of the RNAV Visual (special) Approach to Runway 29 which commenced operation by Southwest on May 21, 2020.
  - B. Update on Harbor Visual Approach (HVA) with GPS waypoints and suggested altitudes. As noted at our last meeting publish date is delayed until July 15, 2021 because of impacts related to the pandemic.
7. New Business:
  - A. HVA preference over the RNAV Visual (special): Peaks Island requests the NAC issue a recommendation for the HVA with GPS waypoints and suggested altitudes be the preferred approach to Runway 29 when available (ceiling greater than 3,000 feet, visibility greater than 4 miles, daylight hours).
  - B. Review of current and planned flight schedules from October 2020 through April 2021 during the noise sensitive hours from 10:00 pm – 7:00 am.
  - C. Review of runway use data and how noise preferences impact runway use.
  - D. Update on the Jetport's online flight tracking and noise complaint portal: More information on each flight (airline, aircraft type, altitude, & flight #) and schedule for implementation.
  - E. Online noise complaint report entry and examples.
  - F. Airfield construction planned in 2021: Construct Air Cargo Taxiway & Taxiway A East – Phase 1
8. Closing Questions / Public Comment
9. Next Meeting: Proposed Thursday, May 20, 2021.
10. Adjournment

# 1. Welcome NAC Members and Public Attendees

Portland City Councilor (Chair) Tae Chong	Peaks Island Resident Representative Jennifer Lavanture
Stroudwater Village Association President or Designee Tom Ainsworth	President of Western Promenade or Designee Dr. Jeremy Morton
South Portland City Councilor or Representative Deqa Dhalac	South Portland Resident Representative David Wakelin (John Levesque non-voting designee)
Westbrook City Councilor or Representative Mike Foley	Cape Elizabeth Town Councilor or Representative Penny Jordan
Greater Portland Chamber of Commerce President or Designee Jerry Angier	FAA Air Traffic Control Manager (Acting) Shaun Patten
Air Cargo Station Manager Steve Dalzell	Signatory Airline Station Manager Katherine Hughes
Gorham Town Councilor or Representative Lee Pratt	Scarborough Town Councilor or Representative Guy Gledhill

# 1. WebEx Meeting Information

---

**JOIN WEBEX MEETING:**

<https://portlandinternationaljetport.my.webex.com/portlandinternationaljetport.my/j.php?MTID=mba9c431b6de6913b44b129264cf17f14>

Meeting number (access code): **132 533 0261**

Password: **JRh8N6D59Ra** (57486635 from phones and video systems)

Join by phone: +1-408-418-9388 United States Toll

Tap to join from a mobile device (attendees only)  
[+1-408-418-9388,,1325330261#57486635#](tel:+1-408-418-9388,,1325330261#57486635#)

Need help? Go to <http://help.webex.com>

For public comment, you will need to use the “raise your hand to speak” feature in WebEx. In the participant panel click on the hand icon next to your name. You will be unmuted by the host when it is time for public comment.

## 2. Opening Questions / Public Comment (15 minutes)

---

- For public comment:  
You will need to use the “raise your hand to speak” feature in WebEx. In the participant panel click on the hand icon next to your name. If you are using a mobile device press \*3 . You will be unmuted by the host when it is time for public comment.
- Please state your name and address for the record.

# 3. Approval of May 20, 2020 Meeting Minutes



Portland International Jetport Noise Advisory Committee  
1001 Westbrook Street, Portland, Maine 04102

Date	Start	End	Next Meeting	Next Time	Prepared By	Company
5/20/2020	6:00PM	7:55PM	10/29/2020 Tentative	6:00PM	A. Cyr	PWM

Attended By	Absentees
Tae Chong - Portland City Councilor/NAC Chair	Guy Gledhill - Scarborough Representative
Tom Ainsworth - Stroudwater Village Association	
Mike Foley - Mayor Westbrook	<b>PWM Representatives</b>
David Wakelin - South Portland Representative	Paul Bradbury - Airport Director
Jerry Morton - Western Promenade Rep	Zachary Briggs - Customer Experience Manager
Katherine Hughes - Air Carrier Station Manager Rep	Tim Reid - Airport Operations Manager
Mark Collins - FAA ATC	Aaron Cyr - Airport Operations Supervisor
Jerry Angier - Greater Portland Chamber of Commerce	Laura Slyk - Customer Relations Specialist
Jennifer Lavanture - Peaks Island Representative	
Steve Dalzell - FedEx	
Penny Jordan - Cape Elizabeth Town Councilor	
Lee Pratt - Gorham Town Councilor	
Deqa Dhalac - South Portland City Councilor	
<b>Non-Member Attendees</b>	<b>Non-Member Attendees</b>
Ralph Nicosia-Rusin - FAA Airports	Kathleen Bergen
Richard Doucette - FAA Airports	Karen Friedman
Reginald E. Davis - FAA	Phil
Ralph Ashmore	Peter
Karen L. Goff - FAA	Lee
Triss Critchfield	J Cobb
Peter Stanton	Jamie Hogan
Eric Griffin	Lorna Christian
DJDea	Vicki Flanagan

## 1. Welcome / WebEx Meeting Information:

Opening comments and a welcome to all members and guests were made by Tae Chong, Portland City Councilor and Chair of the NAC.

The meeting was led by Councilor Chong.

Link to the full Draft minutes:

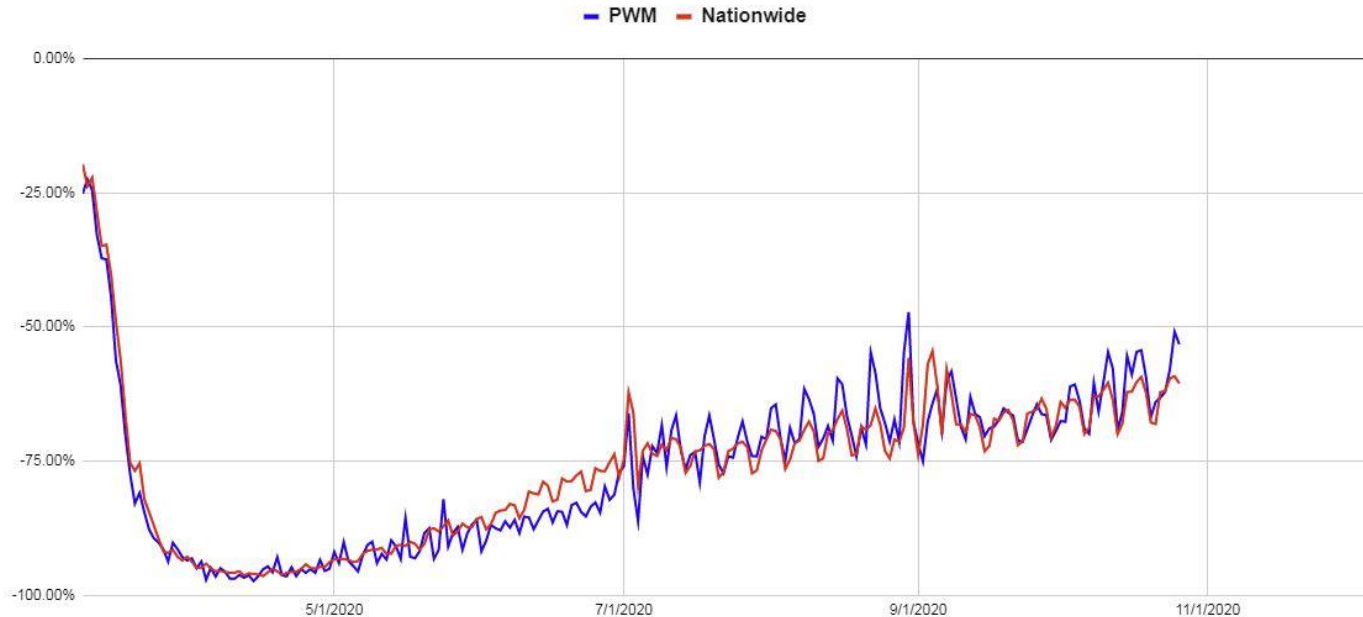
[https://portlandjetport.org/sites/default/files/files/Draft\\_NAC%20Meeting%20Minutes%20-%202020\\_1\\_30\\_revised%2005202020.pdf](https://portlandjetport.org/sites/default/files/files/Draft_NAC%20Meeting%20Minutes%20-%202020_1_30_revised%2005202020.pdf)

Link to Meeting Presentation:

[https://portlandjetport.org/sites/default/files/files/NAC%20Meeting%20Presentation%202020520\\_final.pdf](https://portlandjetport.org/sites/default/files/files/NAC%20Meeting%20Presentation%202020520_final.pdf)

## 4. Jetport Operating Statistics: COVID-19 PWM & National Impact

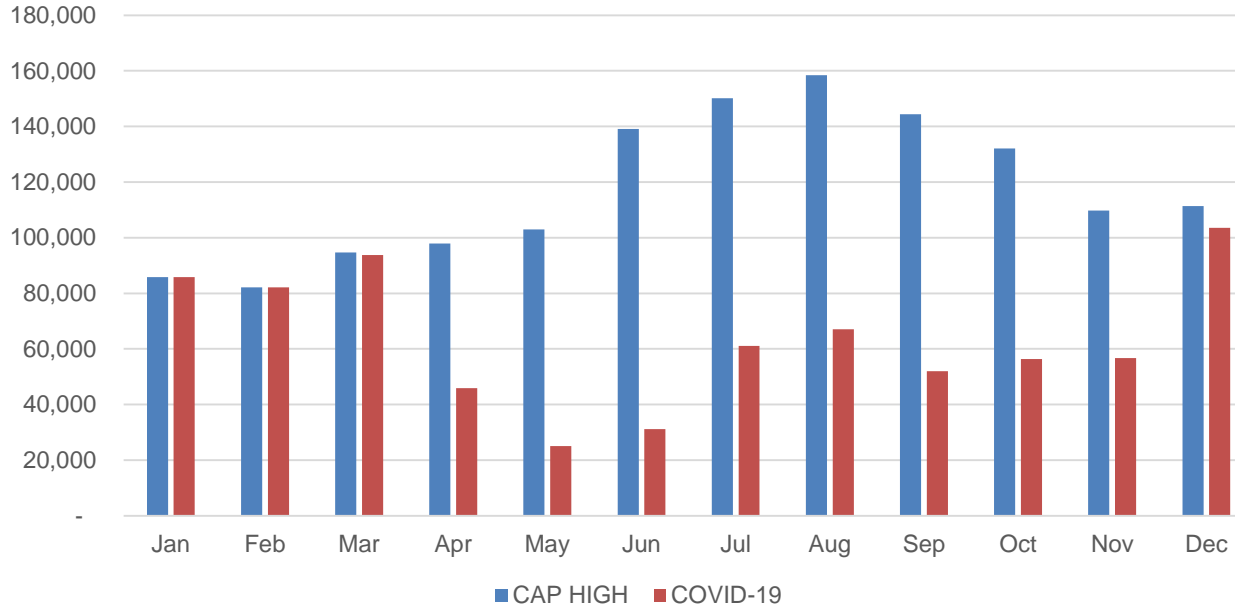
PWM and Nationwide



For the week ending October 24, 2020 average domestic throughput for the US was down **63.0%** and PWM was down **61.1%** from the same week in 2019.

## 4. Jetport Operating Statistics: COVID-19 Impact on 2020 Capacity

COVID-19 Impact on PWM Capacity  
Updated 10/2/2020



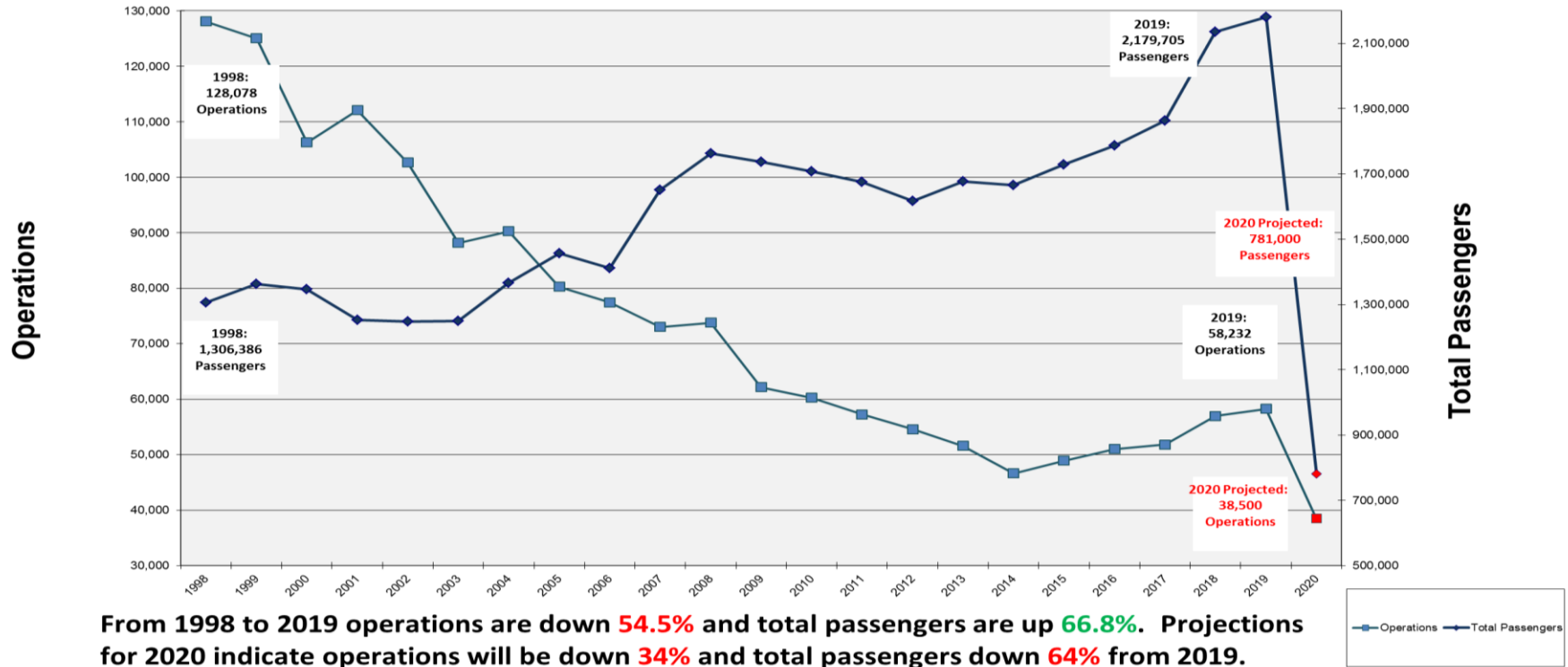
Outbound Capacity  
is down **648,444** seats.

This represents a  
reduction of **50.20%**  
from the initial pre-  
pandemic 2020  
Schedule.

## 4. Jetport Operating Statistics: Historical Enplanements

	JAN	FEB	MAR	APR	MAY	JUN	JUL	AUG	SEP	OCT	NOV	DEC	Total	YOY % Change
2009	53,194	56,597	65,801	60,412	66,607	78,514	98,852	107,730	81,361	86,345	64,245	59,012	878,670	
2010	54,572	52,300	64,097	68,263	67,812	77,122	91,115	101,234	78,666	81,631	63,434	54,952	855,198	-2.7%
2011	51,278	53,493	65,925	63,835	68,188	76,236	92,855	95,219	77,163	79,097	61,393	55,139	839,821	-1.8%
2012	49,310	51,971	60,574	64,041	68,543	74,159	87,503	92,742	77,661	76,475	58,972	54,103	816,054	-2.8%
2013	50,413	49,175	60,393	66,643	70,906	74,518	90,596	96,583	82,396	84,320	59,029	58,972	843,944	3.4%
2014	48,818	48,770	64,414	65,873	69,448	75,085	88,763	96,224	82,881	85,388	58,365	60,012	844,041	0.0%
2015	48,563	46,461	59,348	64,355	71,113	82,041	97,206	102,054	86,623	87,892	65,595	58,702	869,953	3.1%
2016	49,982	48,897	61,051	66,309	72,695	79,392	95,454	100,668	92,260	94,762	68,821	65,138	895,429	2.9%
2017	54,499	50,256	65,566	67,338	75,344	84,231	101,368	104,165	92,530	99,996	71,613	64,343	931,249	4.0%
2018	56,272	57,672	62,490	77,423	81,816	100,961	122,194	130,339	110,634	115,234	83,995	74,537	1,073,567	15.3%
2019	64,824	65,678	77,180	78,421	84,340	100,525	119,151	127,461	113,123	110,707	77,611	75,017	1,094,038	1.9%
2020	67,985	67,499	36,979	2,535	7,184	14,486	32,359	41,658	35,281				305,966	
Change ENP	4.9%	2.8%	-52.1%	-96.8%	-91.5%	-85.6%	-72.8%	-67.3%	-68.8%					
Cap 20	85,779	82,098	93,743	45,881	25,057	31,152	61,070	67,038	52,031	56,343	56,454	98,509	755,155	
LF 20	79%	82%	39%	6%	29%	47%	53%	62%	68%	0%	0%	0%	40.5%	
Cap 19	88,780	80,783	90,923	92,011	103,822	121,715	137,503	142,466	126,980	122,380	93,111	90,600	1,291,074	
LF 19	73%	81%	85%	85%	81%	83%	87%	89%	89%	90%	83%	83%	85%	
Change CAP 19/20	-3.4%	1.6%	3.1%	-50.1%	-75.9%	-74.4%	-55.6%	-52.9%	-59.0%	-54.0%	-39.4%	8.7%	-41.5%	

## 4. Jetport Operating Statistics: Operations vs Total Passengers



## 5. Noise Data: Noise Reports vs Reporters

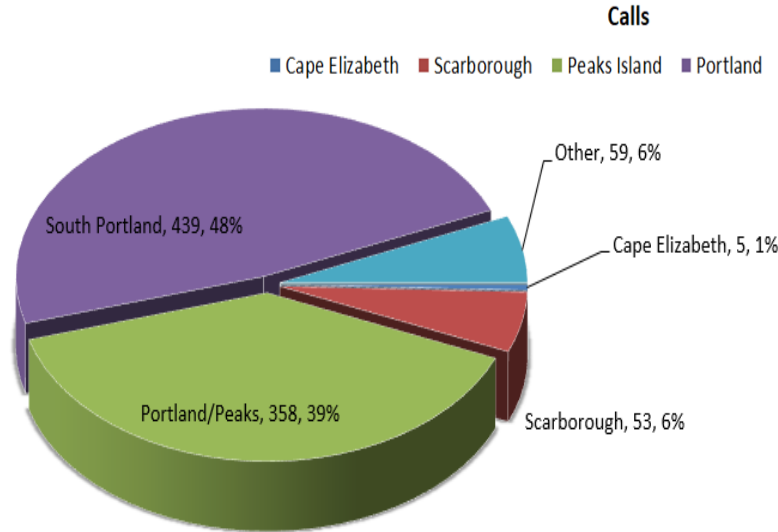
		Jan	Feb	Mar	Apr	May	Jun	Jul	Aug	Sep	Oct	Nov	Dec	Total
2011	Report	0	0	2	24	165	160	289	299	89	18	6	1	1053
	Reporter	0	0	1	3	4	5	10	11	5	2	2	1	44
2012	Report	3	0	0	6	1	13	22	52	1	3	2	1	104
	Reporter	0	0	0	2	1	7	8	10	1	3	2	1	35
2013	Report	0	0	4	9	10	15	13	22	20	2	1	4	100
	Reporter	0	0	4	3	5	4	4	11	8	2	1	1	43
2014	Report	6	26	32	31	24	42	59	44	19	19	7	28	337
	Reporter	1	2	4	7	6	13	12	25	9	6	2	3	90
2015	Report	7	7	13	28	38	46	75	49	78	43	2	2	388
	Reporter	1	2	4	4	7	8	9	15	13	7	2	2	74
2016	Report	11	8	21	26	37	33	106	137	34	14	19	21	467
	Reporter	4	5	4	7	7	8	13	12	9	4	1	4	78
2017	Report	3	1	4	10	29	31	33	84	61	76	429	169	930
	Reporter	2	1	4	4	8	10	15	19	21	16	17	8	84
2018	Report	172	44	22	40	52	57	227	180	129	204	160	119	1406
	Reporter	4	9	9	4	8	16	27	22	17	18	16	31	181
2019	Report	74	34	33	9	55	97	115	359	141	66	58	33	1074
	Reporter	15	11	6	4	17	30	43	76	35	3	8	3	251
2020	Report	53	56	61	22	89	150	267	240	143				1081
	Reporter	9	9	9	5	31	48	38	49	22				220

## 5. Noise Data: Reports by Neighborhood January - September

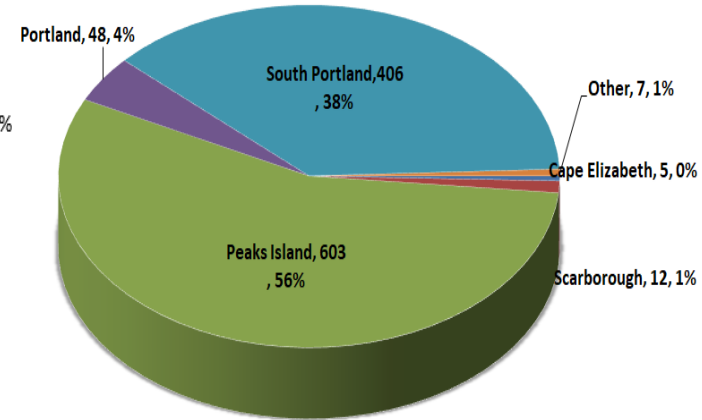
Noise **Reports** by  
Neighborhood:

**1081** noise related  
Complaints Since Jan. 1,  
2020

**2019**



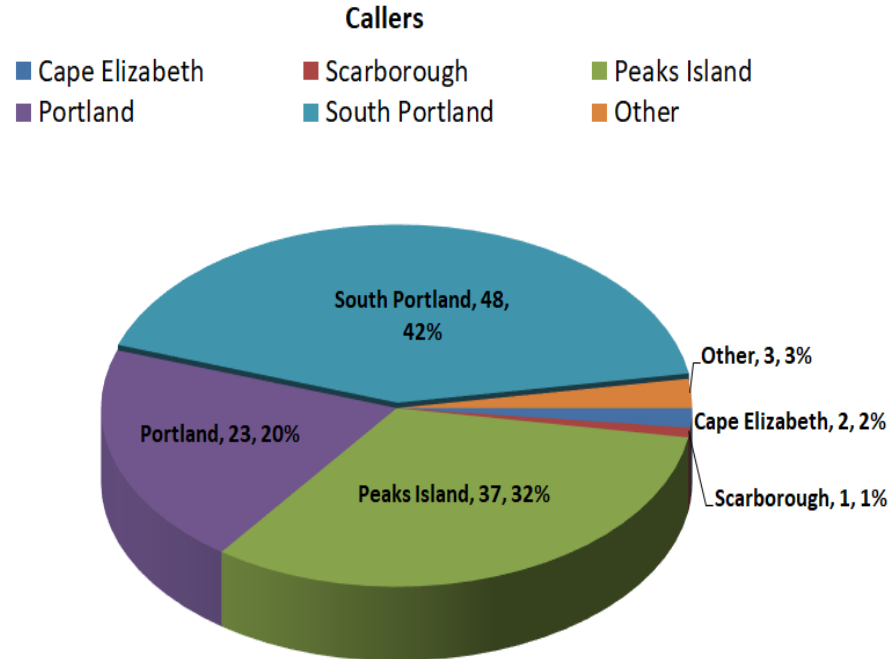
**2020**



## 5. Noise Data: Reporters by Neighborhood

Noise **Reporters** by  
Neighborhood:

**114** Unique Callers  
since Jan. 1, 2020



## 5. Noise Data: PWM Runway Use January – September 2020

2020 Runway Closures for construction:

- Runway 11/29  
May 10<sup>th</sup> – May 23<sup>rd</sup>, and June 9<sup>th</sup> – June 13<sup>th</sup>
- Runway 18/36  
June 15<sup>th</sup> – October 12<sup>th</sup>

		PWM Runway Operations												
	2020	January	February	March	April	May	June	July	August	September	October	November	December	Totals
	11A	393	346	627	275	301	624	963	915	887				5,331
	11D	252	277	506	202	193	480	797	742	724				4,173
	18A	31	82	156	92	180	113	-	-	-				654
	18D	29	68	134	86	179	120	-	-	-				616
	29A	1,318	1,240	673	254	288	376	842	1,220	912				7,123
	29D	1,381	1,309	835	287	338	458	907	1,239	897				7,651
	36A	137	123	196	85	101	103	-	-	-				745
	36D	89	79	34	86	91	98	-	-	-				477
	<b>Total</b>	<b>3,630</b>	<b>3,524</b>	<b>3,161</b>	<b>1,367</b>	<b>1,671</b>	<b>2,372</b>	<b>3,509</b>	<b>4,116</b>	<b>3,420</b>	<b>-</b>	<b>-</b>	<b>-</b>	<b>26,770</b>
% Use of Primary Runway 2020		92%	90%	84%	74%	67%	82%	100%	100%	100%	#DIV/0!	#DIV/0!	#DIV/0!	88%
% Use of Primary Runway 2019		93%	93%	87%	85%	78%	82%	78%	83%	79%	80%	87%	94%	85%

## 5. Noise Data: FedEx / Wiggins / CSA Runway Use



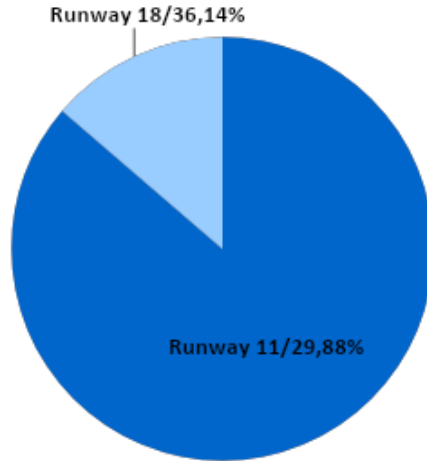
	PWM Runway Operations												
	January	February	March	April	May	June	July	August	September	October	November	December	Totals
11A	14	7	18	16	6	38	41	33	25				198
11D	8	4	6	8	2	3	16	6	13				66
18A	13	22	28	27	35	19	0	0	0				144
18D	2	5	17	9	8	12	0	0	0				53
29A	52	41	23	25	14	26	28	37	29				275
29D	47	42	30	23	29	39	46	40	28				324
36A	16	18	21	30	16	14	0	0	0				115
36D	9	10	12	32	18	16	0	0	0				97
<b>Total</b>	<b>161</b>	<b>149</b>	<b>155</b>	<b>170</b>	<b>128</b>	<b>167</b>	<b>131</b>	<b>116</b>	<b>95</b>				<b>1272</b>
% Use of Primary Runway 2020	<b>75%</b>	<b>63%</b>	<b>50%</b>	<b>42%</b>	<b>40%</b>	<b>63%</b>	<b>100%</b>	<b>100%</b>	<b>100%</b>				<b>70%</b>
% Use of Primary Runway 2019	<b>75%</b>	<b>76%</b>	<b>56%</b>	<b>57%</b>	<b>52%</b>	<b>58%</b>	<b>54%</b>	<b>50%</b>	<b>45%</b>	<b>44%</b>	<b>55%</b>	<b>76%</b>	<b>58%</b>

Data includes both Cessna Citation and Beech 99 aircraft operated by Wiggins & CSA

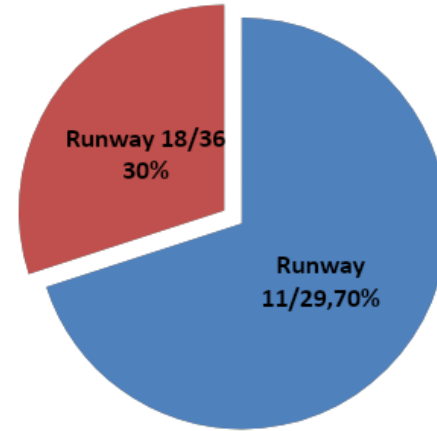
## 5. Noise Data: Runway Use January 1<sup>st</sup> through September 30, 2020

---

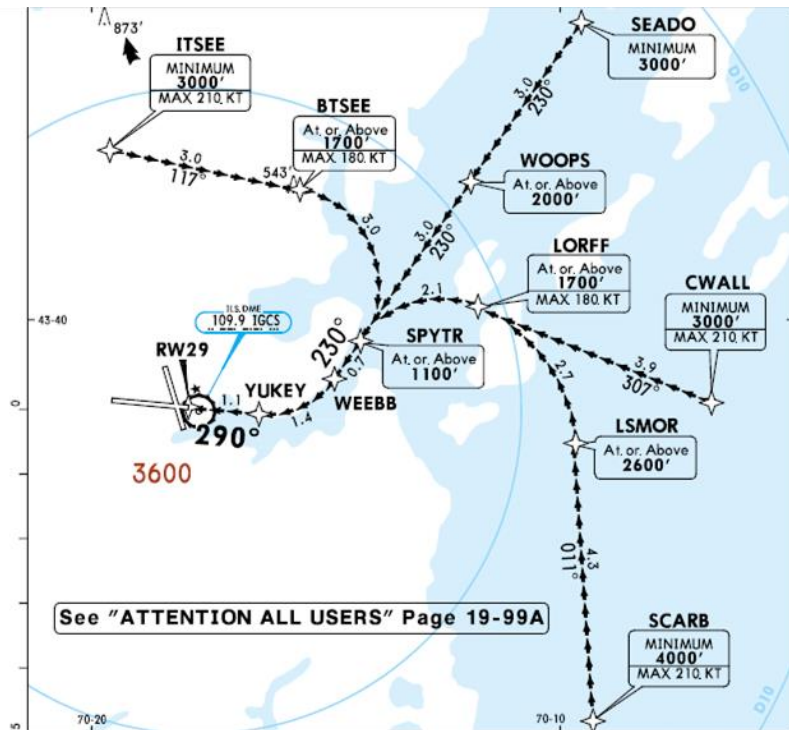
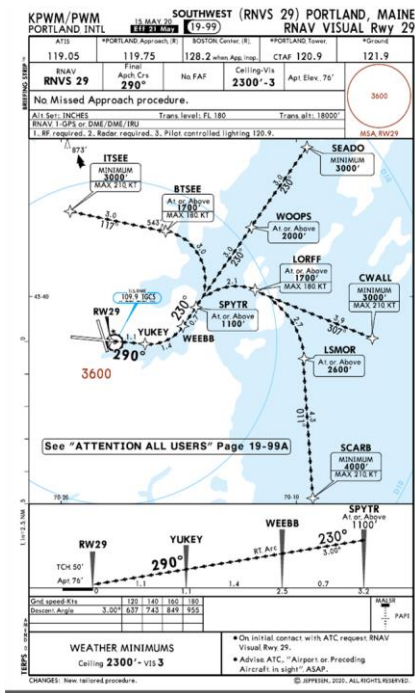
Total Runway Usage



Wiggins Runway Usage



## 6. Old Business Item A: Review and discussion of the RNAV Visual (special) Approach

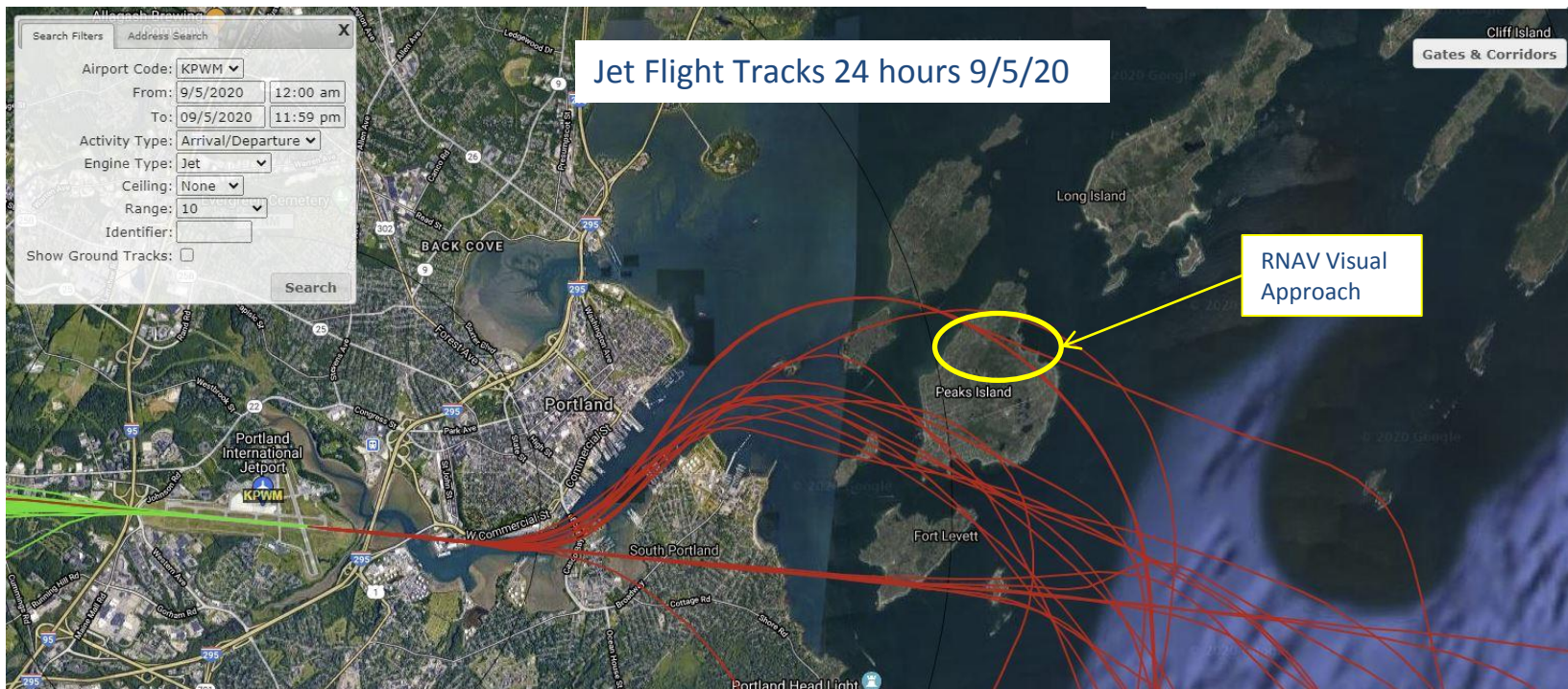


RNAV Visual (special) approach became available for Southwest Airlines use only starting on May 21, 2020.

Available day and night with minimum ceiling of 2,300 feet and visibility of 3 miles.

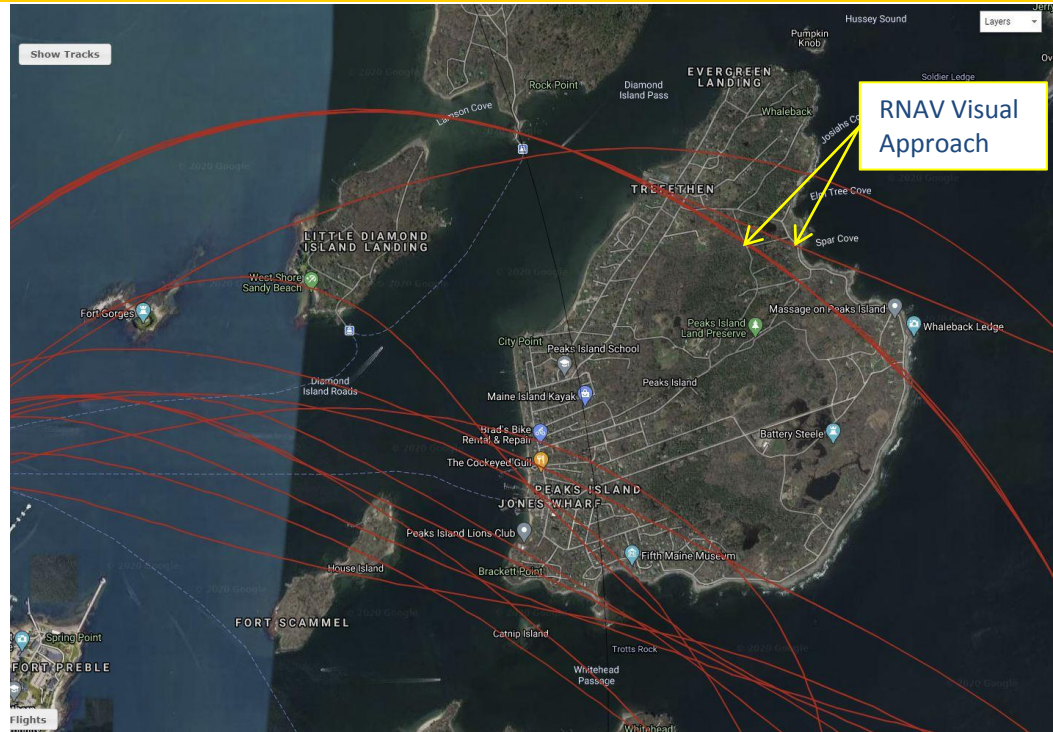
For November approach is only available for the 3 daily scheduled arrivals by Southwest.

## 6. Old Business Item A: Review and discussion of the RNAV Visual (special) Approach



## 6. Old Business Item A: Review and discussion of the RNAV Visual (special) Approach

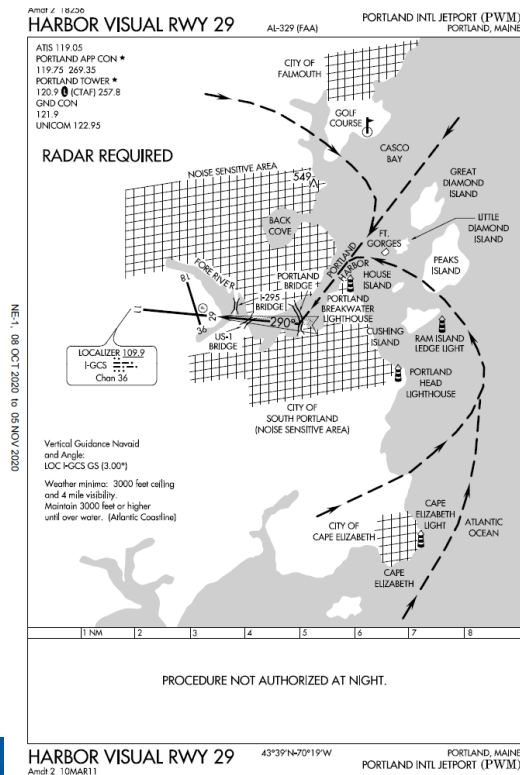
Jet Flight Tracks for  
24 hours on 9/5/20



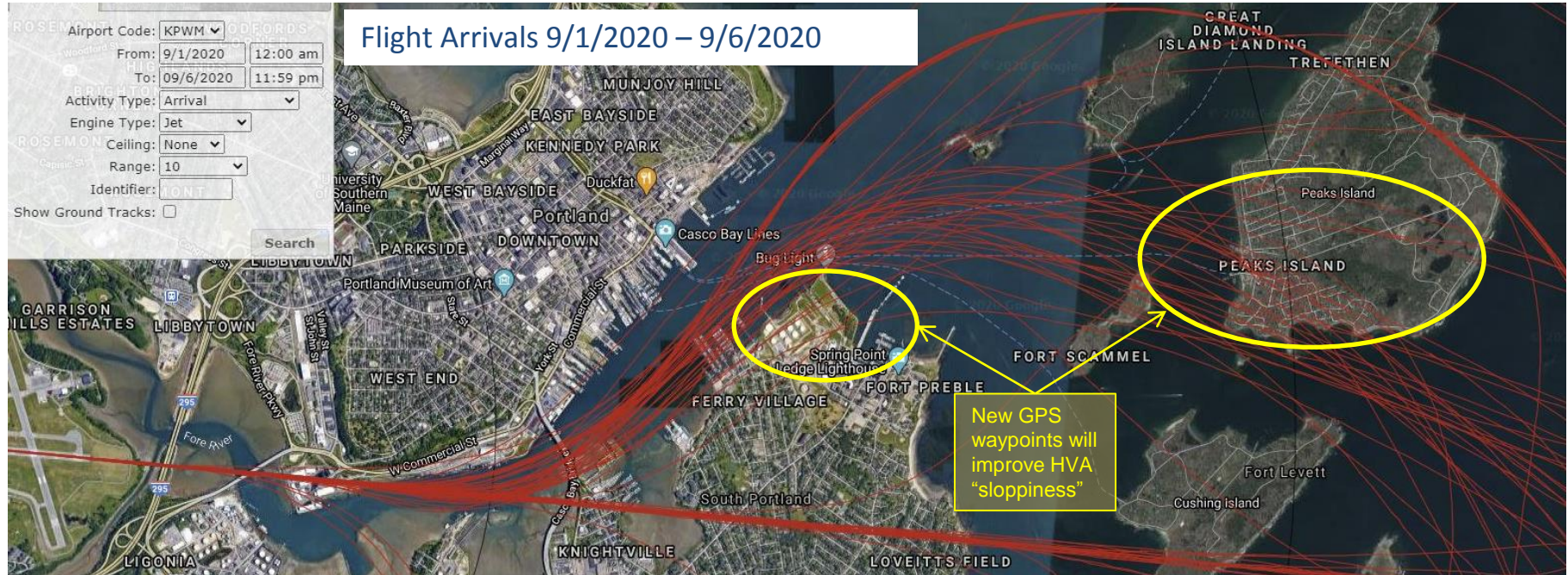
## 6. Old Business Item B: Update on Harbor Visual Approach (HVA) with GPS Waypoints & Suggested Altitudes

As noted in our May 20, 2020 meeting Harbor Visual Approach with waypoints publish date has been delayed to July 15, 2021 due to the pandemic.

- Arrivals only
- Daylight Hours Only
- More Restrictive than regular Visual Flight Rules (VFR)
- Cloud ceiling greater than 3000ft
- Visibility greater than 4 miles
- Requires Radar (Cumberland)
- Jet Aircraft Only



## 6. Old Business Item B: Update on Harbor Visual Approach (HVA) with GPS Waypoints & Suggested Altitudes



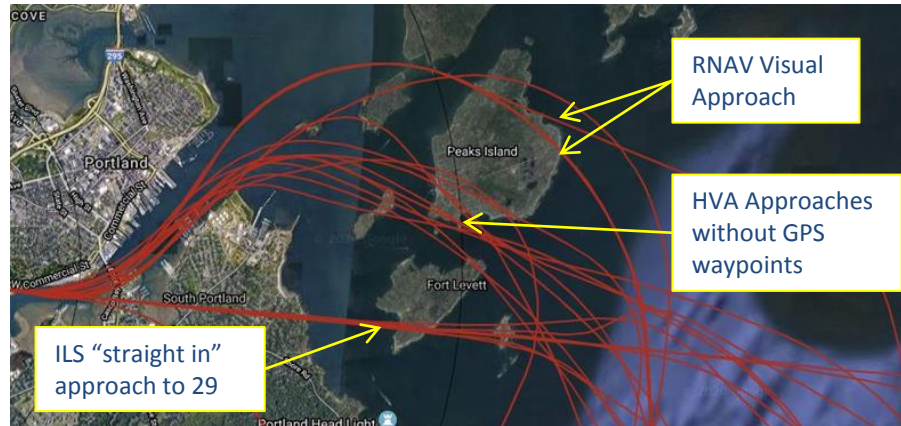
## 6. Old Business Item B: Update on Harbor Visual Approach (HVA) with GPS Waypoints & Suggested Altitudes



## 7. New Business Item A: HVA preference over the RNAV Visual (special)

---

Peaks Island requests the NAC vote to issue a recommendation for the HVA with GPS waypoints and suggested altitudes be the preferred approach to Runway 29 when available (ceiling greater than 3,000 feet, visibility greater than 4 miles, daylight hours).



## 7. New Business Item B: Flight Schedule October 2020 - April 2021

PWM will continue to report to the Committee changes in the airline schedule that occur during noise sensitive hours 10pm-7am according to the FAA Day Night Average Sound Level (DNL) calculations.

PWM Noise Sensitive hours according to the Record of Approval is 11:30 p.m. – 6:15 a.m.

Non-Stop Destinations



American Airlines

DELTA  
AIR LINES

Elite Airways

FRONTIER  
AIRLINES

jetBlue  
AIRWAYS

Southwest

UNITED

Cape Air

sun country airlines

## 7. New Business Item B: Flight Schedule October 2020 – April 2021

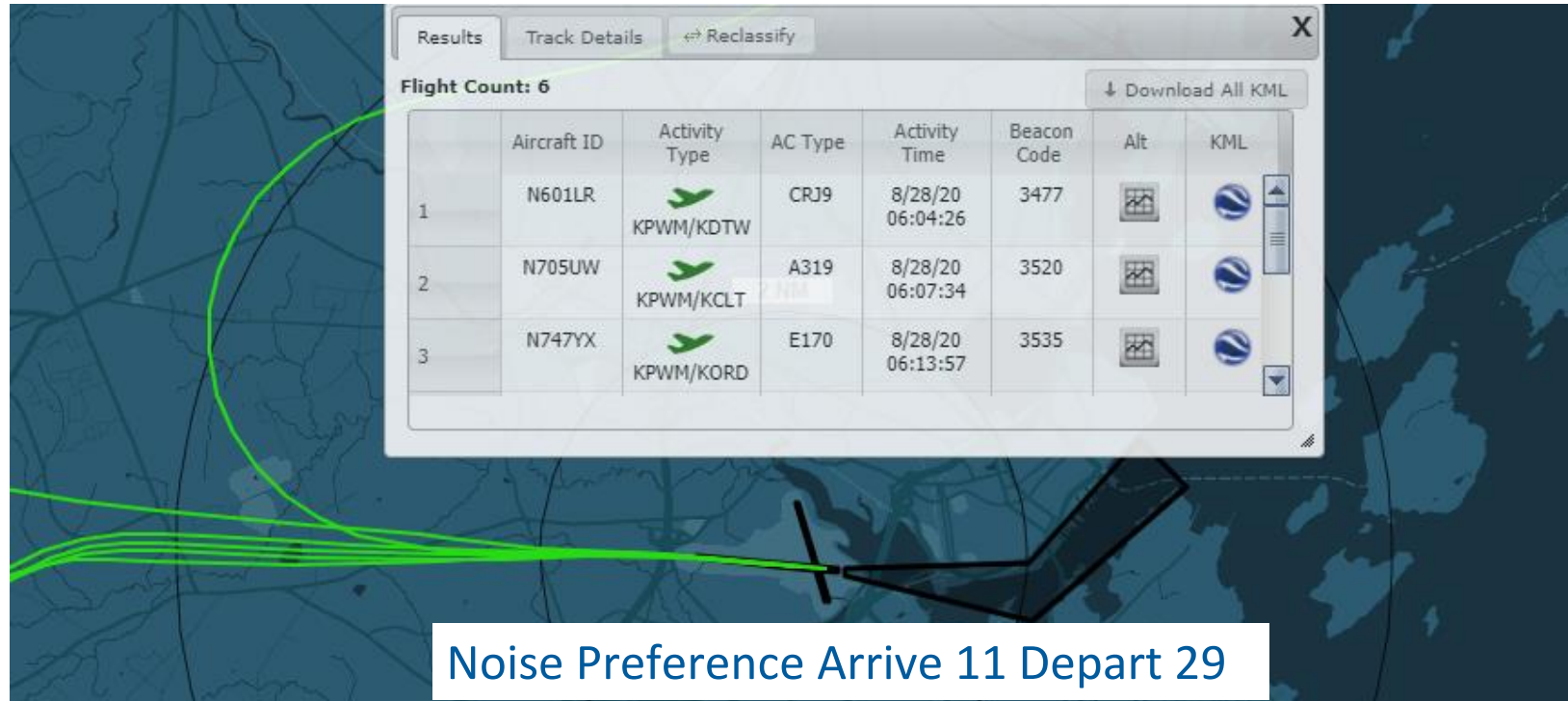
Reminder: Due to the impact of COVID-19 Delta announced on April 30<sup>th</sup> that it would retire its remaining MD-88 and MD-90 fleets early. All 47 MD-88s and 29 MD-90s in Delta's fleet were retired in June.

Departures between 10:00 pm and 7:00 am							
Travel Month	Oct 2020	Nov 2020	Dec 2020	Jan 2021	Feb 2021	Mar 2021	Apr 2021
Dep Time	Flights	Flights	Flights	Flights	Flights	Flights	Flights
TOTAL DEPARTURES 10p - 7a	98	146	204	264	256	287	282
Daily Avg Arrivals 10p - 7a	3	5	7	9	9	9	9
TOTAL DEPARTURES	606	634	1,241	1,333	1,232	1,379	1,162
% of Departures occurring 10p - 7a	16.2%	23.0%	16.4%	19.8%	20.8%	20.8%	24.3%
Travel Month	Oct 2019	Nov 2019	Dec 2019	Jan 2020	Feb 2020	Mar 2020	Apr 2020
Dep Time	Flights	Flights	Flights	Flights	Flights	Flights	Flights
TOTAL DEPARTURES 10p - 7a	269	240	247	226	241	263	114
Daily Avg Arrivals 10p - 7a	9	8	8	7	9	8	4
TOTAL DEPARTURES	1,490	1,245	1,187	1,174	1,133	1,242	535
% of Departures occurring 10p - 7a	18.1%	19.3%	20.8%	19.3%	21.3%	21.2%	21.3%
Change YOY in Departures 10p - 7a	(171)	(94)	(43)	38	15	24	168
% Change YOY in Departures 10p - 7a	-63.6%	-39.2%	-17.4%	16.8%	6.2%	9.1%	147.4%

## 7. New Business Item B: Flight Schedule October 2020 - April 2021

Arrivals between 10:00 pm and 7:00 am							
Travel Month	Oct 2020	Nov 2020	Dec 2020	Jan 2021	Feb 2021	Mar 2021	Apr 2021
Arr Time	Flights	Flights	Flights	Flights	Flights	Flights	Flights
TOTAL ARRIVALS 10p - 7a	98	97	188	270	272	301	248
Daily Avg Arrivals 10p - 7a	3	3	6	9	10	10	8
TOTAL ARRIVALS	605	637	1,241	1,333	1,232	1,379	1,162
% of Arrivals occurring 10p - 7a	16.2%	15.2%	15.1%	20.3%	22.1%	21.8%	21.3%
Travel Month	Oct 2019	Nov 2019	Dec 2019	Jan 2020	Feb 2020	Mar 2020	Apr 2020
Arr Time	Flights	Flights	Flights	Flights	Flights	Flights	Flights
TOTAL ARRIVALS 10p - 7a	252	211	225	249	223	240	91
Daily Avg Arrivals 10p - 7a	8	7	7	8	8	8	3
TOTAL ARRIVALS	1,489	1,246	1,184	1,173	1,127	1,244	532
% of Arrivals occurring 10p - 7a	16.9%	16.9%	19.0%	21.2%	19.8%	19.3%	17.1%
Change YOY in Arrivals 10p - 7a	(154)	(114)	(37)	21	49	61	157
% Change YOY in Arrivals 10p - 7a	-61.1%	-54.0%	-16.4%	8.4%	22.0%	25.4%	172.5%

## 7. New Business Item C: Review of runway use data and noise preferences



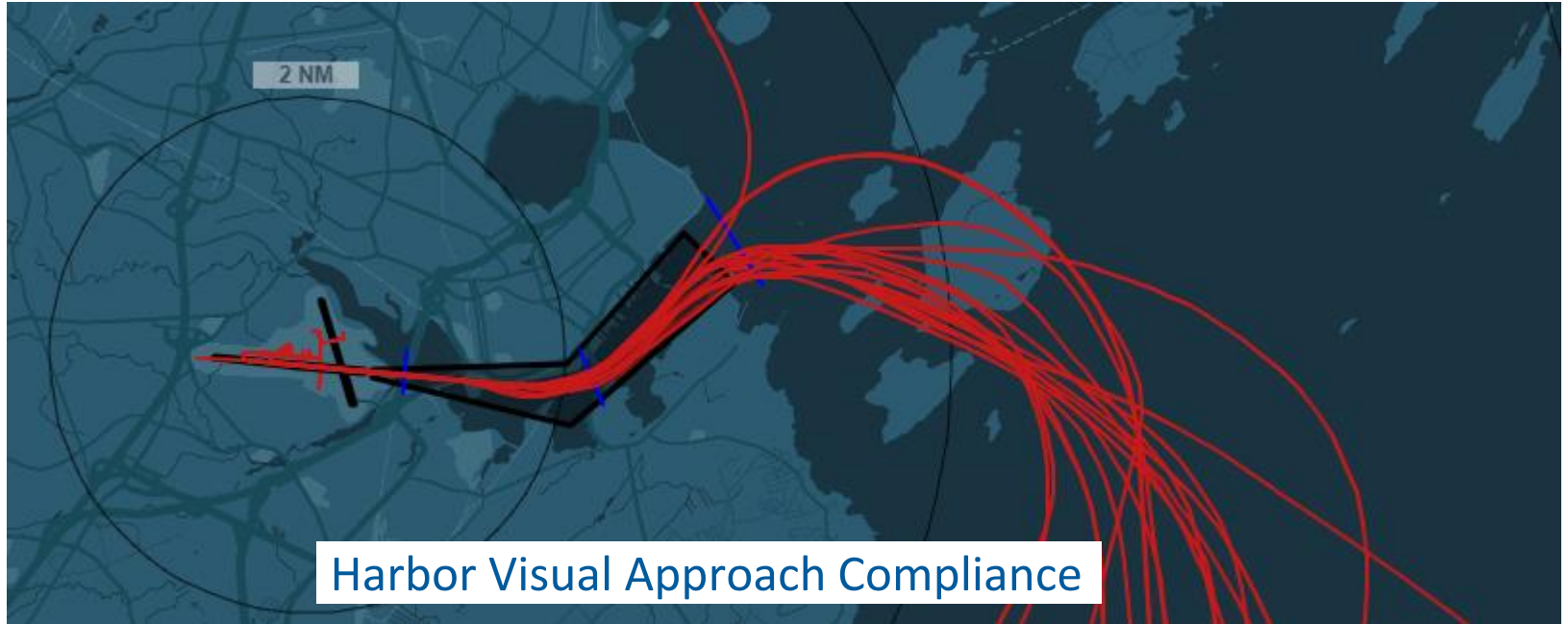
## 7. New Business Item C: Review of runway use data and noise preferences

### Noise Preference Arrive 11 Depart 29: Data for 10pm – 7am, August 24-30, 2020

<b>Aug. 24 - 30</b>	8/24	8/25	8/26	8/27	8/28	8/29	8/30	<b>Weekly Total</b>
RWY 11 Arrivals	2	0	0	1	2	0	0	<b>5</b>
RWY 29 Departures	3	3	3	5	6	0	5	<b>25</b>
RWY 11/29 Operations	5	5	5	8	9	8	7	<b>47</b>
% Noise Preferred Arrivals & Departures from the west	100%	60%	60%	68%	89%	0%	71%	<b>64%</b>

## 7. New Business Item C: Review of runway use data and noise preferences

---



## 7. New Business Item C: Review of runway use data and noise preferences

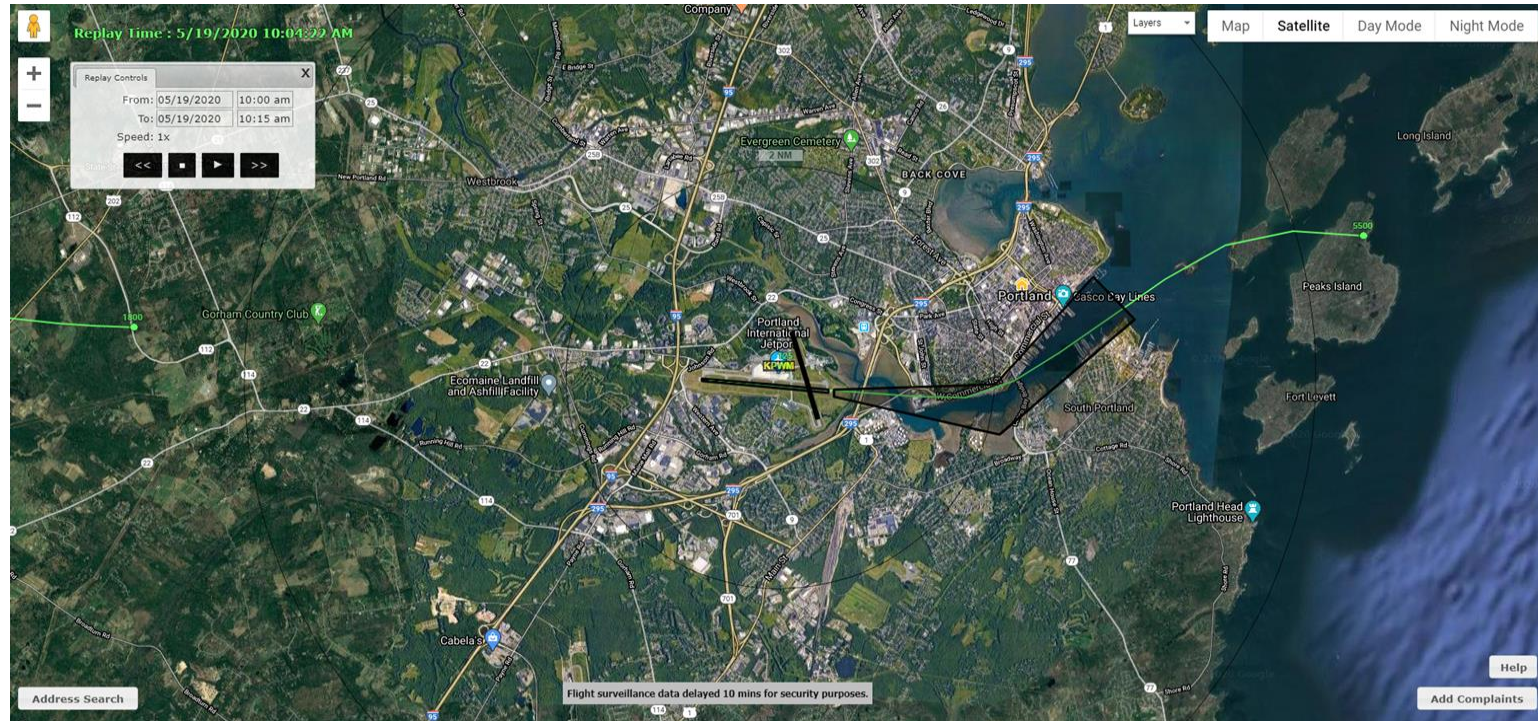
### Harbor Visual Approach Compliance

<b>Aug 24 -30</b>	8/24	8/25	8/26	8/27	8/28*	8/29	8/30	<b>Weekly Total</b>
Number of Approaches of eligible aircraft to Runway 29	Not Available	25	27	27	9	Not Available	24	<b>112</b>
Number of Successful Harbor Visual Approaches Flown	Not Available	15	15	19	6	Not Available	13	<b>68</b>
Percentage of Successful Harbor Visual Approaches	***	60%	56%	70%	67%	***	54%	<b>61%</b>

\* Partial Day HVA available due to weather minimums

\*\*\* HVA unavailable due to weather minimums \*\*\*

## 7. New Business Item D: Update on Jetport's Public Portal & Flight Tracing



## 7. New Business Item D: Update on Jetport's Public Portal & Flight Tracing

---

Phase 1: Flight information displayed on screen

- a. Flight #
- b. aircraft type or model type
- c. Operation type (arrival or departure)
- d. Altitude of aircraft

Phase 1 is underway with the software team at Vector, the image to the right is the first example. Estimated completion is Q1 2021.

Phase 2: Provide the user the ability to store personal information so it does not need to be entered each time. The work to develop this will commence in Q2 2022.



Launch PWM Public Portal at:

<https://airport.vector-us.com/Public/PublicPortal.aspx?airportCode=KPWM>

## 7. New Business Item E: Online noise complaint report entry

### Incomplete Noise Report

- Report does not contain last name, phone, number, address, noise start time, and detailed comment.
- All data fields are critical for tracking measures and accuracy.
- Without this information we are unable to determine if a aircraft deviated from an established arrival or departure procedure.

**Add New Complaint**

[New](#)

[Add Complaint](#) [Complaint Response](#) [View Flight Data](#)

First:\*  Last:\*

Home Phone: (  )  -  Cell Phone: (  )  -

Email Address:

Address:

Lat.:  Long.:

Res Zone:

Select any combination of the types below:

Disturbance Type:

Activity Disturbed:

Noise Start:

Noise End:

Aircraft Type:

Airline:

Operation:

Curfew: ☐

Method Rcvd:

Add: ☐

Complaint Comment

[Save](#) [Cancel](#)

## 7. New Business Item E: Online Noise Complaint Report Entry

### Complete Noise Report

- Name
- Phone number
- Email address
- Address
- Disturbance Type
- Noise Start
- Aircraft Type
- Operation
- Thorough comment describing the noise event

Add Complaint Complaint Response View Flight Data

First:\* Aaron Last:\* Cyr

Home Phone: ( 207 ) 756 - 8063 Cell Phone: ( ) -

Email Address: acyr@portlandmaine.gov

Address: 1001 Westbrook Street, Portland, ME, USA

Lat.: 43.6537343 Long.: -70.30956259999999

Res Zone: ▾

Select any combination of the types below:

Disturbance Type: Low Loud Disturbance Low And Loud Frequent

Noise Start: 10/26/2020 05:00 pm

Aircraft Type: Jet ▾

Operation: Arrival ▾

Method Rcvd: ▾

Add: ☐

Activity Disturbed:

Noise End: 10/26/2020 05:10 pm

Airline:

Curfew: ☐

Complaint Comment

An aircraft flew over my address this afternoon at 5:00 pm. The aircraft looked to be a jet on an arrival to the airport.

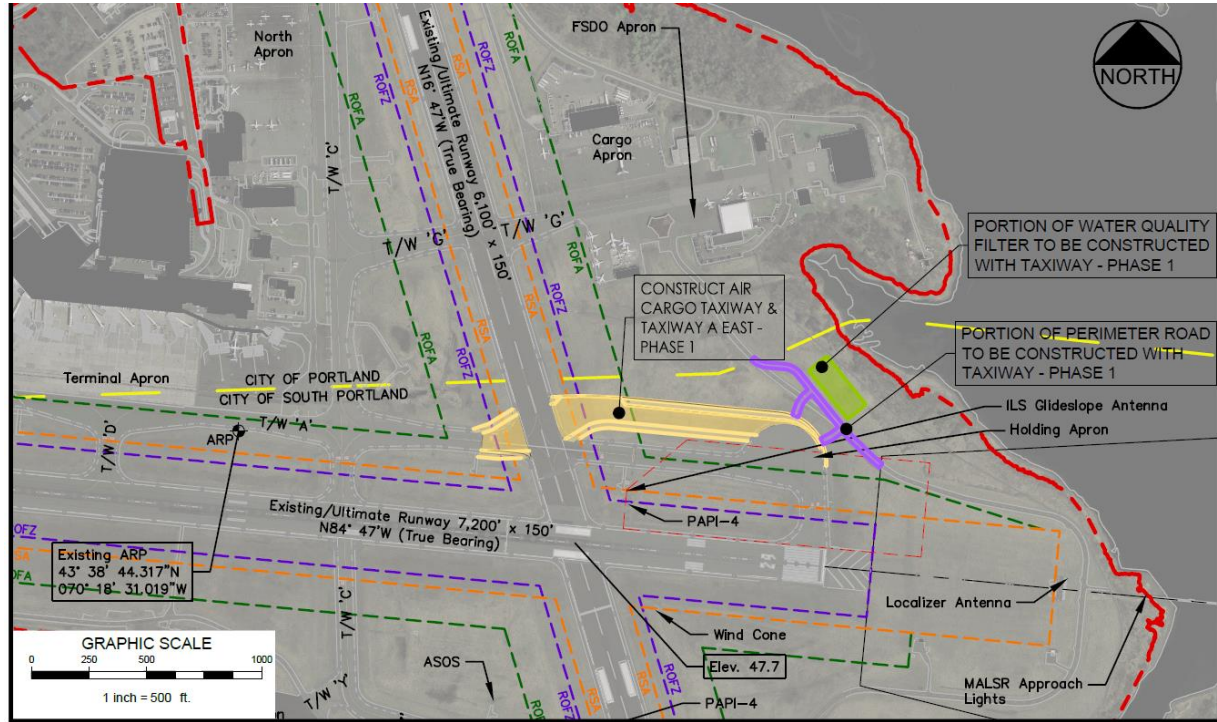
## 7. New Business Item F: Construction for Summer 2021

### Project:

Construct Air Cargo Taxiway & Taxiway A East – Phase 1

### Schedule & Impacts:

Runway 18/36 closed 4 to 8 weeks.



## 8. Questions / Public Comment

---

- Reminder for public comment:  
You will need to use the “raise your hand to speak” feature in WebEx. In the participant panel click on the hand icon next to your name. If you are using a mobile device press \*3 to “raise your hand”. You will be unmuted by the host when it is time for public comment.
- Please state your name and address for the record.

## 9. Next Meeting Date

---

**Propose: Thursday, May 20, 2021 for next meeting**



Thank you!