



# Noise Advisory Committee Meeting May 20, 2021 at 6pm via WebEx

PWW PORTLAND INTERNATIONAL  
**JETPORT**

## JOIN WEBEX MEETING:

<https://portlandinternationaljetport.my.webex.com/portlandinternationaljetport.my/j.php?MTID=mf4ce63ab6bc0e9a8ce7fb677d51d76d6>

Meeting number (access code): **132 185 4920**

Password: **YMX9J98XPap** (96995989 from phones and video systems)

Join by phone: +1-408-418-9388 United States Toll

Tap to join from a mobile device (attendees only)  
[+1-408-418-9388](tel:+14084189388), [1321854920#96995989#](tel:+14084189388)

Need help? Go to <http://help.webex.com>



**Airport Service  
Quality Awards**  
Industry Recognition  
of the Best Airports  
in the World



OUR AIRPORT  
IS THE PROUD  
RECIPIENT  
OF A 2020  
ASQ AWARD

# Agenda: NAC Meeting May 20, 2021

---

1. Welcome / WebEx Meeting Information/Process
2. Opening Questions/ Public Comment (15 minutes)
3. Approval of Minutes for the October 29, 2020 Meeting (Link to [Draft Minutes](#) and [Meeting Presentation](#))
4. FAA Briefing on the Neighborhood Environmental Study (NES) by Sean Doyle, FAA's Senior Aviation Noise Specialist.
5. Jetport Operating Statistics: Passenger volumes, capacity, # operations, and COVID Impact
6. Noise Data: Noise report tabulations through April 2021
7. Old Business:
  - A. Update on Harbor Visual Approach (HVA) with GPS waypoints and suggested altitudes. As noted in an email to the NAC on March 18, 2021 the publishing date has been pushed two cycles to December 2, 2021 due to the pandemic.
  - B. RNAV Visual Special Approach to Runway 29 Update: Review use and airlines now authorized to fly this approach. FAA update on the Committee's vote to make the HVA preferred when available over the RNAV Visual Special.
8. New Business:
  - A. Review of Runway 11 departures with early north turns impacting the Western Promenade, and early south turns impacting South Portland and Cape Elizabeth.
  - B. Review of current and planned flight schedules from May 2021 through October 2021 during the noise sensitive hours from 10:00 pm – 7:00 am.
  - C. Airfield construction underway this construction season: Air Cargo Taxiway & Taxiway A East – Phase 1 project.
  - D. Airfield construction planned for spring 2022: Rehabilitation of Runway 11/29.
9. Closing Questions / Public Comment
10. Next Meeting: Proposed Thursday, October 21, 2021.
11. Adjournment

# 1. Welcome NAC Members and Public Attendees

Portland City Councilor (Chair) Tae Chong	Peaks Island Resident Representative Jennifer Lavanture
Stroudwater Village Association President or Designee Tom Ainsworth	President of Western Promenade or Designee Dr. Jeremy Morton
South Portland City Councilor or Representative Deqa Dhalac	South Portland Resident Representative David Wakelin (John Levesque non-voting designee)
Westbrook City Councilor or Representative Mike Foley	Cape Elizabeth Town Councilor or Representative Penny Jordan
Greater Portland Chamber of Commerce President or Designee Jerry Angier	FAA Air Traffic Control Manager (Acting) Shaun Patten
Air Cargo Station Manager Steve Dalzell	Signatory Airline Station Manager Katherine Hughes
Gorham Town Councilor or Representative Lee Pratt	Scarborough Town Councilor or Representative Guy Gledhill

# 1. WebEx Meeting Information

---

**JOIN WEBEX MEETING:**

<https://portlandinternationaljetport.my.webex.com/portlandinternationaljetport.my/j.php?MTID=mf4ce63ab6bc0e9a8ce7fb677d51d76d6>

Meeting number (access code): **132 185 4920**

Password: **YMx9j98XPaP** (96995989 from phones and video systems)

For public comment, you will need to use the “raise your hand to speak” feature in WebEx. In the participant panel click on the hand icon next to your name. You will be unmuted by the host when it is time for public comment.

## 2. Opening Questions / Public Comment (15 minutes)

---

- For public comment:  
You will need to use the “raise your hand to speak” feature in WebEx. In the participant panel click on the hand icon next to your name. If you are using a mobile device press \*3 . You will be unmuted by the host when it is time for public comment.
- Please state your name and address for the record.

# 3. Approval of October 29, 2020 Meeting Minutes



Portland International Jetport Noise Advisory Committee  
1001 Westbrook Street, Portland, Maine 04102

Date	Start	End	Next Meeting	Next Time	Prepared By	Company
10/29/2020	6:00PM	8:30PM	5/20/2021 Tentative	6:00PM	A. Cyr P. Bradbury	PWM

Attended By	Absentees
Tae Chong - Portland City Council/NAC Chair	Penny Jordan - Cape Elizabeth Town Councilor
Mike Foley - Mayor Westbrook	David Wakelin - South Portland Representative
John Levesque - South Portland Rep (Acting)	Jerry Morton - Western Promenade Rep
Katherine Hughes - Air Carrier Station Manager Rep	Jerry Angier - Greater Portland Chamber of Commerce
Guy Gledhill - Scarborough Representative	
Jennifer Lavature - Peaks Island Rep	
Steve Dalzell - FedEx	PWM Representatives
Tom Ainsworth - Stroudwater Portland	Paul Bradbury - Airport Director
Deqa Dhalac - South Portland City Council	Zachary Briggs - Customer Experience Manager
Lee Pratt - Gorham Town Councilor	Tim Reid - Airport Operations Manager
Shaun Patten - FAA ATC	Aaron Cyr - Airport Operations Supervisor
	Markus Dohahoe - Airport Lead Operations Supervisor
Non-Member Attendees	Non-Member Attendees
Ralph Nicosia-Rusin - FAA Airports	Triss Critchfield
Reggie Davis - FAA	Chris Cox
Ken Knopp - FAA	Kathleen Bergen
Mark Collins - FAA ATC	Steven Brown
Robert Corp	Julie Shane
Fred Somers	Deborah Nagler
Lynn Heinemann	Anne Convi
Randy Schaeffer	Steve Fielding
Karen Goff	Carl Newton
Lorna Christian	Vicki Flanagan
Karen Friedman	Chris Cox

[Link to the full Draft minutes:](#)

[https://portlandjetport.org/sites/default/files/files/Draft\\_NAC%20Meeting%20Minutes-2020\\_10\\_29.pdf](https://portlandjetport.org/sites/default/files/files/Draft_NAC%20Meeting%20Minutes-2020_10_29.pdf)

[Link to Meeting Presentation:](#)

<https://portlandjetport.org/sites/default/files/files/NAC%20Meeting%20Presentation%2020201029.pdf>

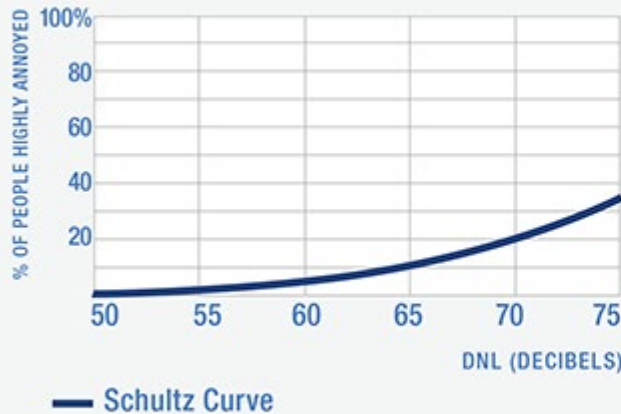
## 4. FAA Briefing on the Neighborhood Environmental Survey (NES)

Please welcome:

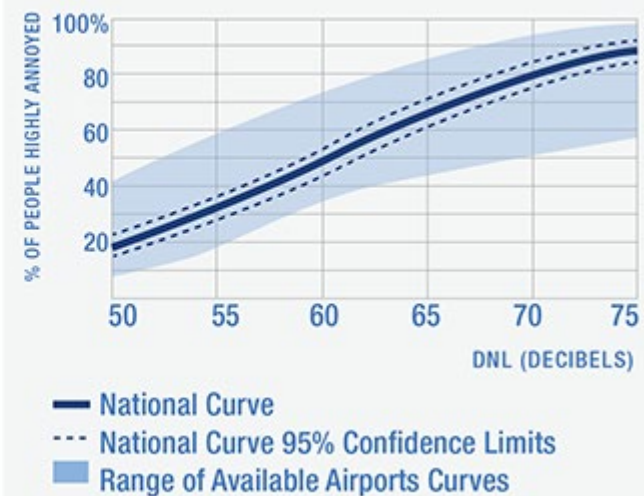
Sean Doyle,  
FAA Senior Aviation Noise  
Specialist

Sean will brief the  
Committee on the FAA's  
Neighborhood  
Environmental Survey  
released earlier this year  
in January.

### SCHULTZ CURVE



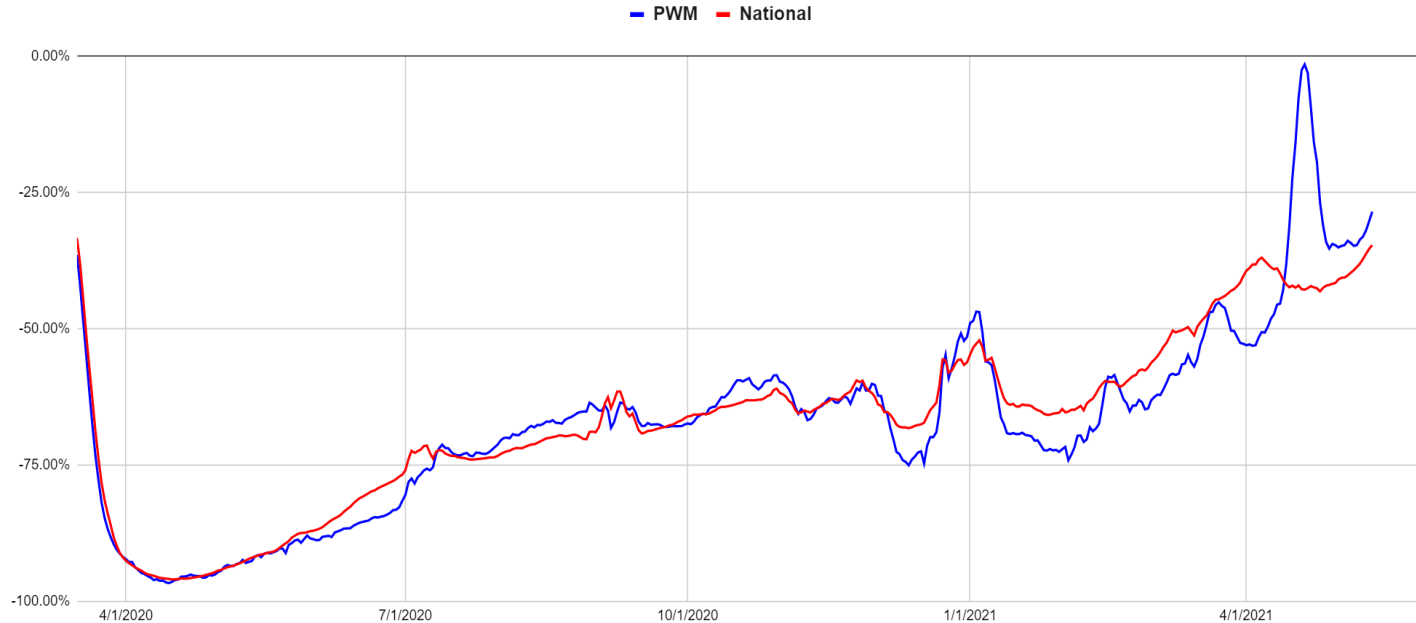
### NATIONAL CURVE





# 5. Jetport Operating Statistics: COVID-19 PWM & National Impact

PWM and Nationwide 7 Day Rolling Average

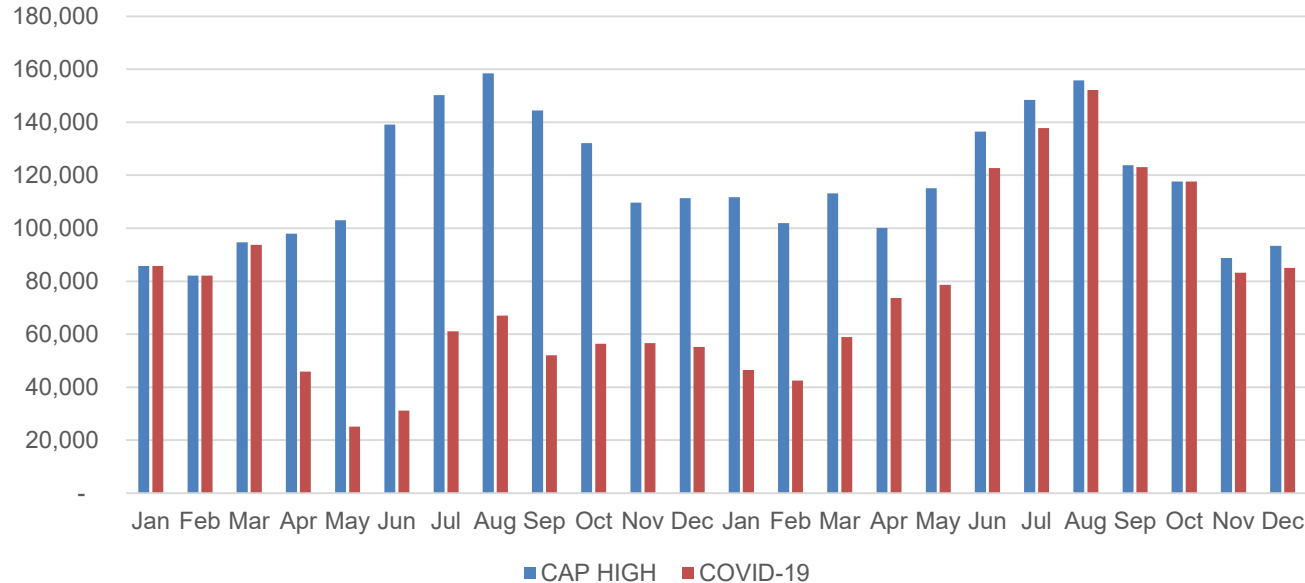


For April PWM saw increased passenger volumes due to April school break and a significant return of leisure travel with increased vaccination rates. PWM trended above the national average for April:  
National Avg: -40.87%  
PWM Avg: -31.49%



## 5. Jetport Operating Statistics: COVID-19 Impact on 2020/21 Capacity

COVID-19 Impact on PWM Capacity  
Updated 4/30/2021



Outbound Capacity  
is down **981,107** seats.

This represents a  
reduction of **-34.85%**  
from the initial pre-  
pandemic 2020  
Schedule.

## 5. Jetport Operating Statistics: Historical Enplanements

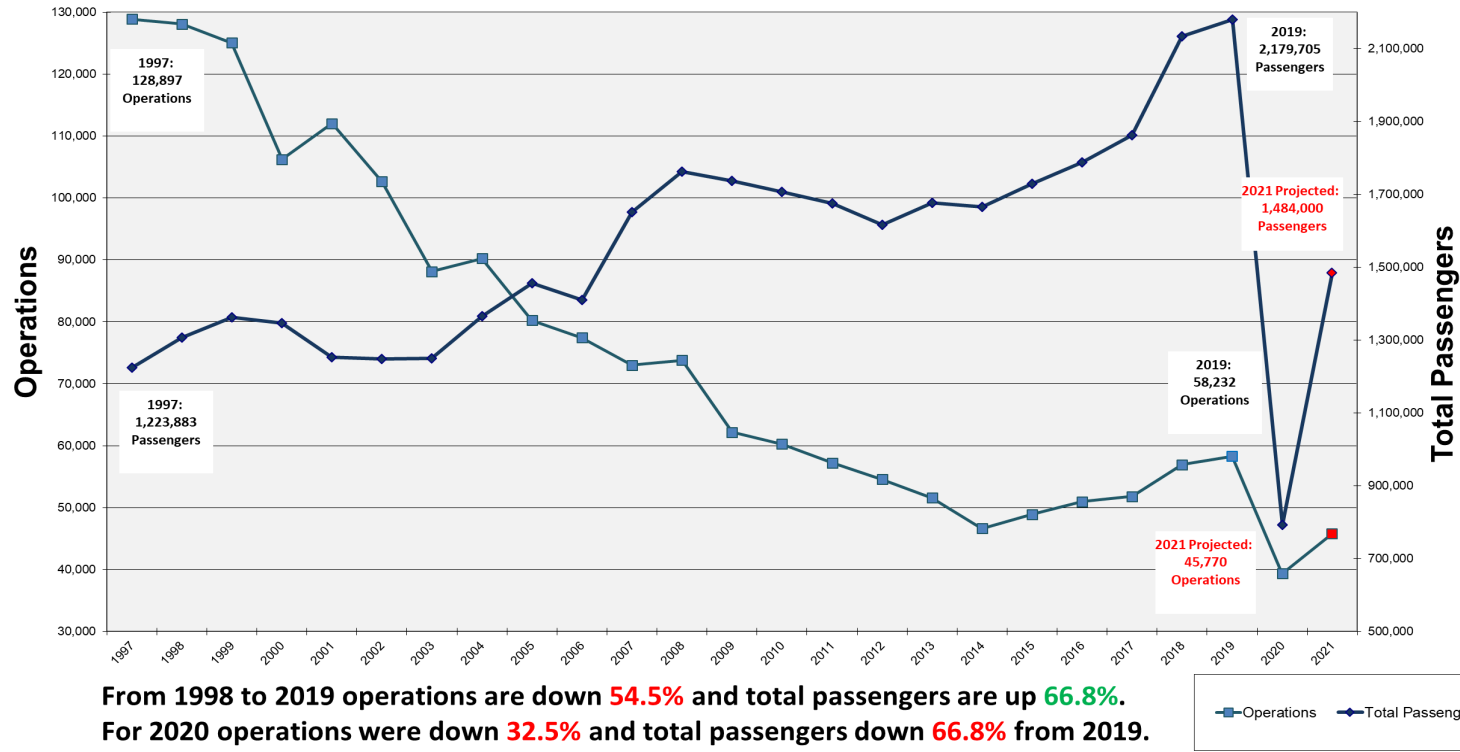
	JAN	FEB	MAR	APR	MAY	JUN	JUL	AUG	SEP	OCT	NOV	DEC	Total	% Change
2010	54,572	52,300	64,097	68,263	67,812	77,122	91,115	101,234	78,666	81,631	63,434	54,952	855,198	-2.7%
2011	51,278	53,493	65,925	63,835	68,188	76,236	92,855	95,219	77,163	79,097	61,393	55,139	839,821	-1.8%
2012	49,310	51,971	60,574	64,041	68,543	74,159	87,503	92,742	77,661	76,475	58,972	54,103	816,054	-2.8%
2013	50,413	49,175	60,393	66,643	70,906	74,518	90,596	96,583	82,396	84,320	59,029	58,972	843,944	3.4%
2014	48,818	48,770	64,414	65,873	69,448	75,085	88,763	96,224	82,881	85,388	58,365	60,012	844,041	0.0%
2015	48,563	46,461	59,348	64,355	71,113	82,041	97,206	102,054	86,623	87,892	65,595	58,702	869,953	3.1%
2016	49,982	48,897	61,051	66,309	72,695	79,392	95,454	100,668	92,260	94,762	68,821	65,138	895,429	2.9%
2017	54,499	50,256	65,566	67,338	75,344	84,231	101,368	104,165	92,530	99,996	71,613	64,343	931,249	4.0%
2018	56,272	57,672	62,490	77,423	81,816	100,961	122,194	130,339	110,634	115,234	83,995	74,537	1,073,567	15.3%
2019	64,824	65,678	77,180	78,421	84,340	100,525	119,151	127,461	113,123	110,707	77,611	75,017	1,094,038	1.9%
2020	67,985	67,499	36,979	2,535	7,184	14,486	32,359	41,658	35,281	39,605	27,399	24,272	397,242	-63.7%
2021	20,907	22,355	34,213										77,475	
Change ENP	-69.2%	-66.9%	-7.5%											
Cap 21	46,494	42,474	58,983	73,687	78,604	122,759	137,757	152,213	123,048	117,610	83,243	84,978	1,121,850	
LF 21	45.0%	52.6%	58.0%											
Cap 20	85,779	82,098	93,743	45,881	25,057	31,152	61,070	67,038	52,031	56,363	56,652	55,186	712,050	
LF 20	79%	82%	39%	6%	29%	47%	53%	62%	68%	70%	48%	44%	56%	
Change CAP 20/21	-46%	-48%	-37%	61%	214%	294%	126%	127%	136%	109%	47%	54%	58%	
Cap 19	88,780	80,783	90,923	92,011	103,822	121,715	137,503	142,466	126,980	122,380	93,111	90,600	1,291,074	
LF 19	73%	81%	85%	85%	81%	83%	87%	89%	89%	90%	83%	83%	85%	
Change CAP 19/20	-3.4%	1.6%	3.1%	-50.1%	-75.9%	-74.4%	-55.6%	-52.9%	-59.0%	-53.9%	-39.2%	-39.1%	-44.8%	
Cap 18	82,705	72,913	85,473	95,466	104,825	125,797	143,457	148,580	132,357	132,078	104,788	98,521	1,326,960	
LF 18	68%	79%	73%	81%	78%	80%	85%	88%	84%	87%	80%	76%	81%	

Record Month

5/20/21

10

## 5. Jetport Operating Statistics: Operations vs Total Passengers

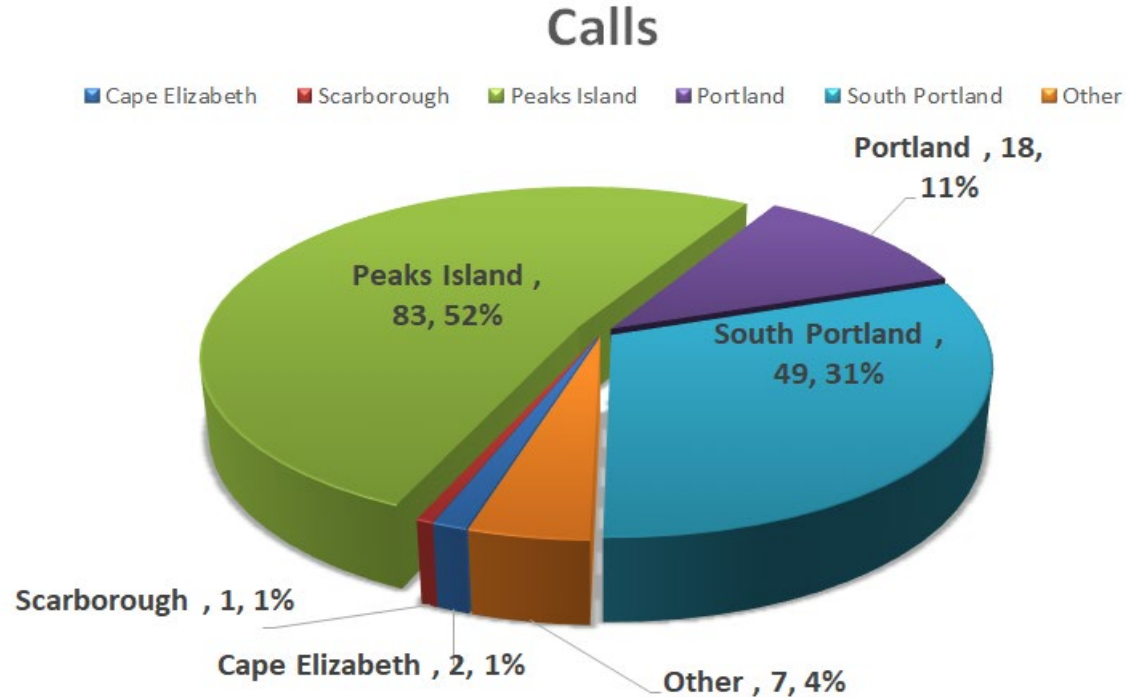


## 6. Noise Data: Noise Reports vs Reporters

		Jan	Feb	Mar	Apr	May	Jun	Jul	Aug	Sep	Oct	Nov	Dec	Total
2013	Report	0	0	4	9	10	15	13	22	20	2	1	4	100
	Reporter	0	0	4	3	5	4	4	11	8	2	1	1	43
2014	Report	6	26	32	31	24	42	59	44	19	19	7	28	337
	Reporter	1	2	4	7	6	13	12	25	9	6	2	3	90
2015	Report	7	7	13	28	38	46	75	49	78	43	2	2	388
	Reporter	1	2	4	4	7	8	9	15	13	7	2	2	74
2016	Report	11	8	21	26	37	33	106	137	34	14	19	21	467
	Reporter	4	5	4	7	7	8	13	12	9	4	1	4	78
2017	Report	3	1	4	10	29	31	33	84	61	76	429	169	930
	Reporter	2	1	4	4	8	10	15	19	21	16	17	8	84
2018	Report	172	44	22	40	52	57	227	180	129	204	160	119	1406
	Reporter	4	9	9	4	8	16	27	22	17	18	16	31	181
2019	Report	74	34	33	9	55	97	115	359	141	66	58	33	1074
	Reporter	15	11	6	4	17	30	43	76	35	3	8	3	251
2020	Report	53	56	61	22	89	150	267	240	143	68	78	26	1253
	Reporter	9	9	9	5	31	48	38	49	22	18	20	9	267
2021	Report	34	19	54	53									160
	Reporter	16	6	22	15									59

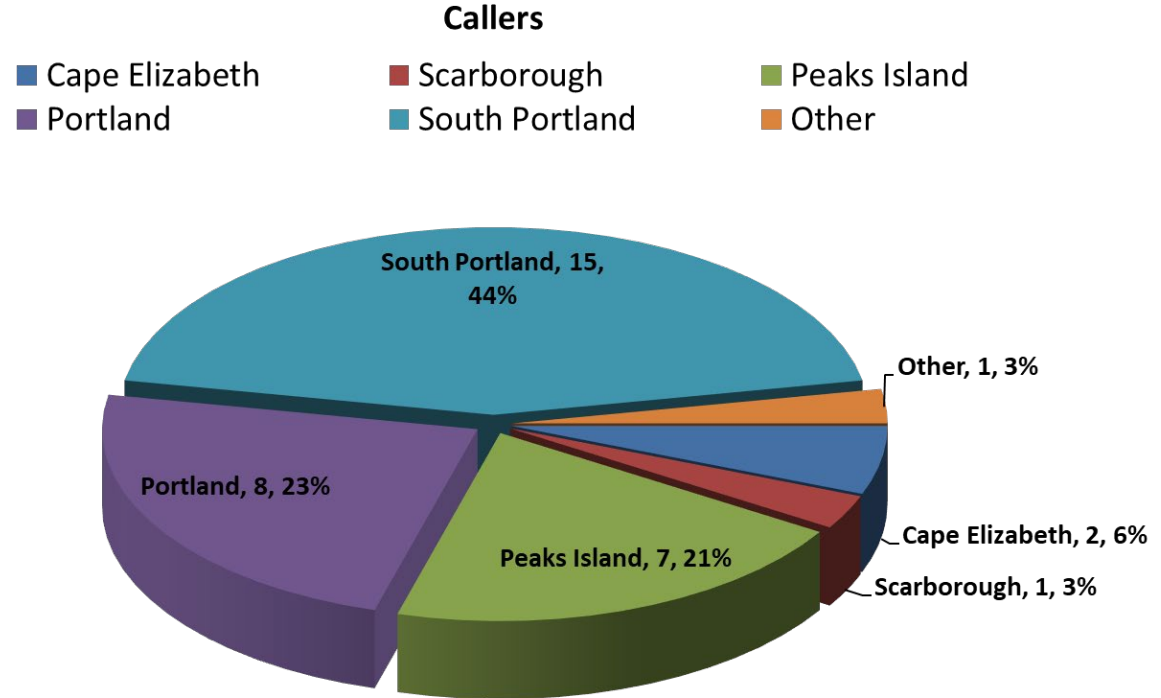
## 6. Noise Data: Reports by Neighborhood January – April 2021

Noise **Reports** by  
Neighborhood –  
**160** complaints since  
Jan. 1, 2021



## 6. Noise Data: Reporters by Neighborhood January – April 2021

Noise **Reporters** by  
Neighborhood –  
**35** Unique Callers  
since Jan. 1, 2021



## 6. Noise Data: Primary Runway Use – 2021 YTD

		PWM Runway Operations												
	2021	January	February	March	April	May	June	July	August	September	October	November	December	Totals
	11A	233	216	286	510									1245
	11D	151	131	197	378									857
	18A	72	31	277	223									603
	18D	49	21	251	203									524
	29A	802	694	825	782									3103
	29D	824	733	864	853									3274
	36A	213	74	106	214									607
	36D	174	64	112	193									543
	Total	2518	1964	2918	3356	0	0	0	0	0	0	0	0	10756
% Use of Primary Runway 2021		80%	90%	74%	75%									80%
% Use of Primary Runway 2020		92%	90%	84%	74%	67%	82%	100%	100%	100%	88%	85%	88%	88%



## 6. Noise Data: FedEx / Wiggins Runway Use



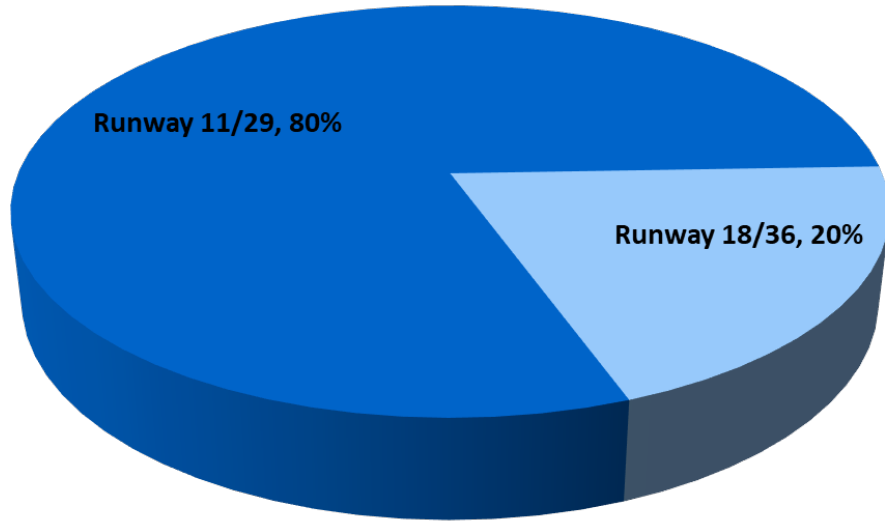
	PWM Runway Operations												
	January	February	March	April	May	June	July	August	September	October	November	December	Totals
11A	3	11	9	10									33
11D	6	3	5	1									15
18A	21	12	35	28									96
18D	0	0	8	0									8
29A	22	25	32	26									105
29D	25	22	39	32									118
36A	17	3	8	15									43
36D	22	6	17	31									76
Total	116	82	153	143	0	0	0	0	0	0	0	0	494
% Use of Primary Runway 2021	48%	74%	56%	48%									57%
% Use of Primary Runway 2020	75%	63%	50%	42%	40%	63%	100%	100%	100%	74%	56%	66%	69%

Data includes both Cessna Citation and Beech 99 aircraft operated by Wiggins

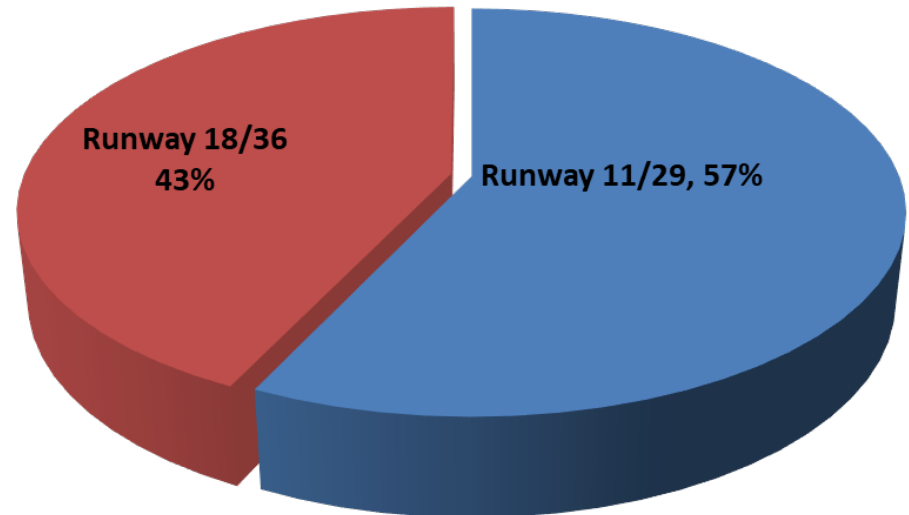
## 6. Noise Data: Runway use January – April 2021

---

Total Runway Usage



Wiggins Runway Usage



## 6. Noise Data: Runway Preference during Noise Sensitive Hours 10pm – 7am

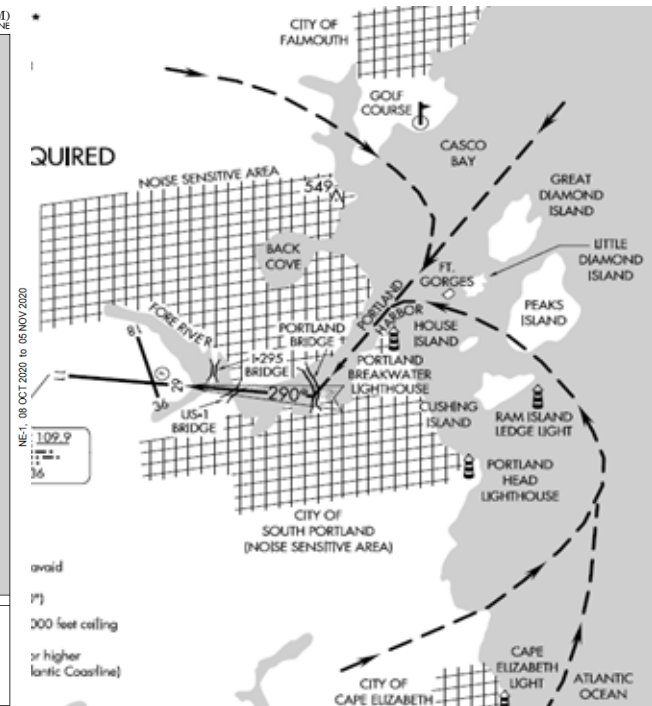
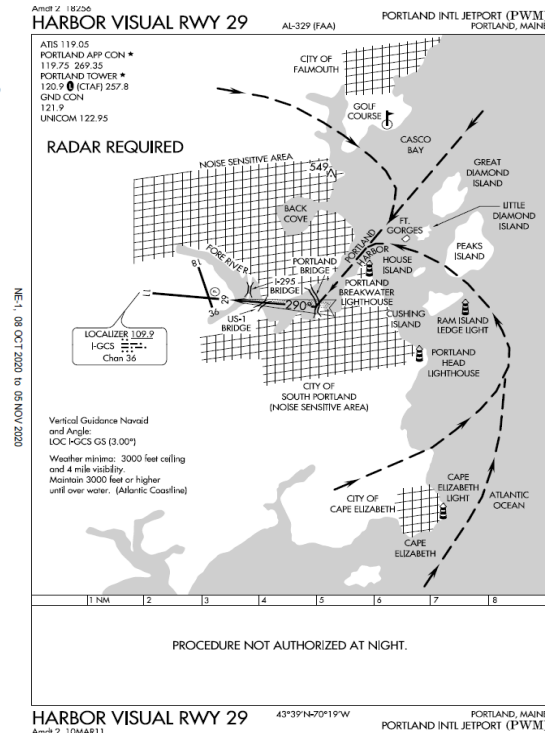
---

<b>April 19 - 25</b> (School Break)	Monday	Tuesday	Wednesday	Thursday	Friday	Saturday	Sunday	<b>Weekly Totals</b>
RWY 11 Arrivals	0	0	0	0	0	0	0	<b>0</b>
RWY 29 Departures	7	9	7	7	7	7	7	<b>51</b>
RWY 11/29 Operations	13	14	12	13	13	14	11	<b>90</b>
% of Arrivals / Departures from west	53%	64%	58%	54%	54%	50%	64%	<b>57%</b>

# 7. Old Business Item A: Update on Harbor Visual Approach (HVA) with GPS Waypoints & Suggested Altitudes

As noted in a March 18, 2021 email Harbor Visual Approach with waypoints publish date has been further delayed to December 2, 2021 due to the pandemic.

- Arrivals only
- Daylight Hours Only
- More Restrictive than regular Visual Flight Rules (VFR)
- Cloud ceiling greater than 3000ft
- Visibility greater than 4 miles
- Requires Radar (Cumberland)
- Jet Aircraft Only





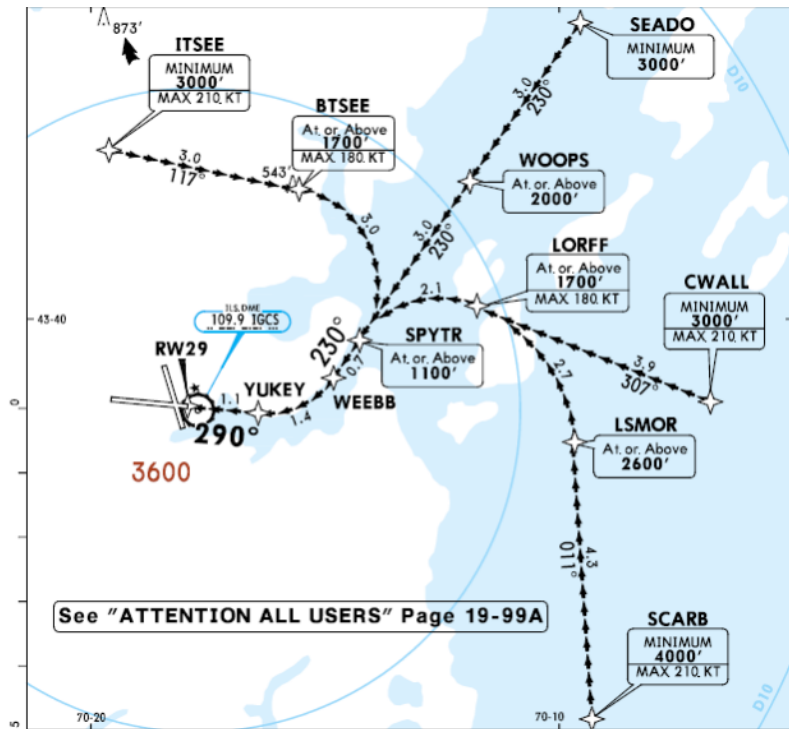
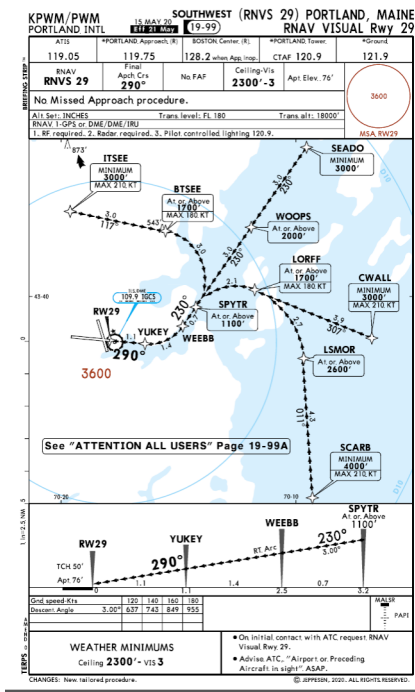




## 7. Old Business Item A: Update on Harbor Visual Approach (HVA) with GPS Waypoints & Suggested Altitudes



## 7. Old Business Item B: Review and discussion of the RNAV Visual (special) Approach and HVA preference

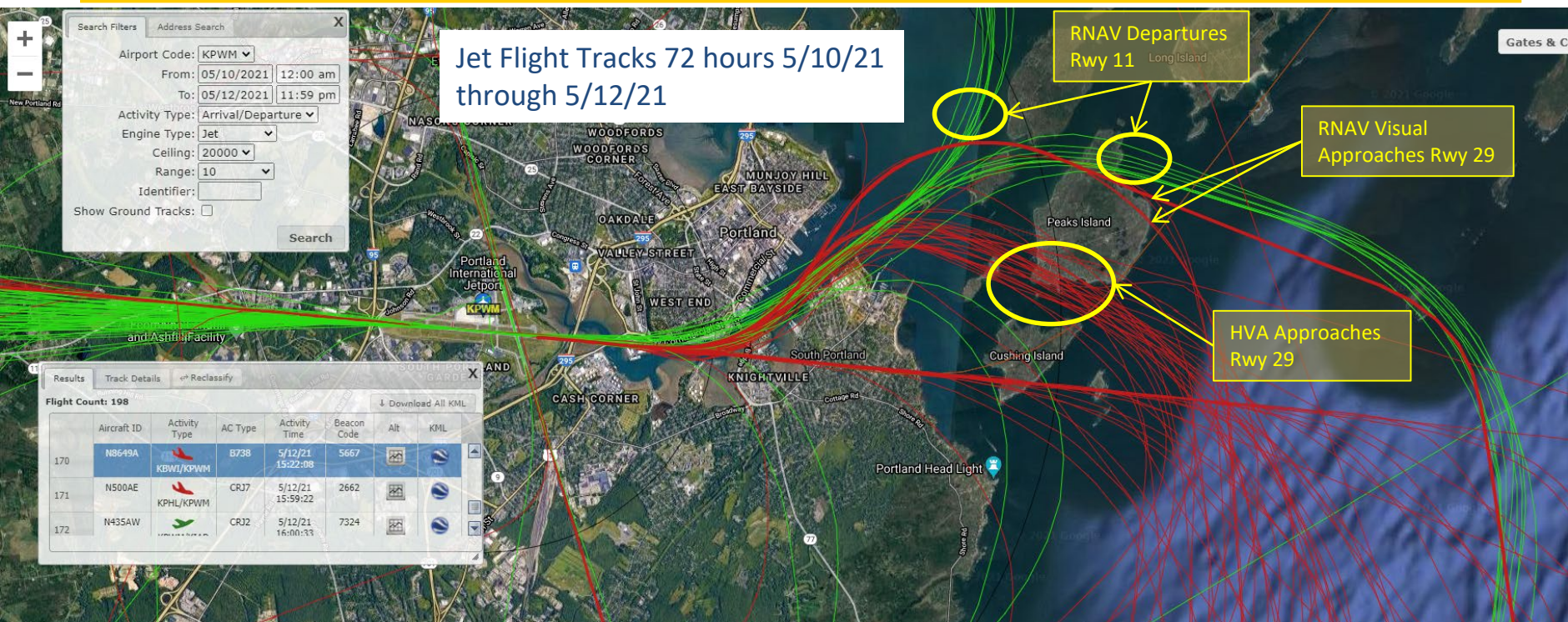


RNAV Visual (special) approach became available for Southwest Airlines use only starting on May 21, 2020. Delta Airlines was approved by FAA Flight Standards in April, but has not yet flown it.

Available day and night with minimum ceiling of 2,300 feet and visibility of 3 miles.

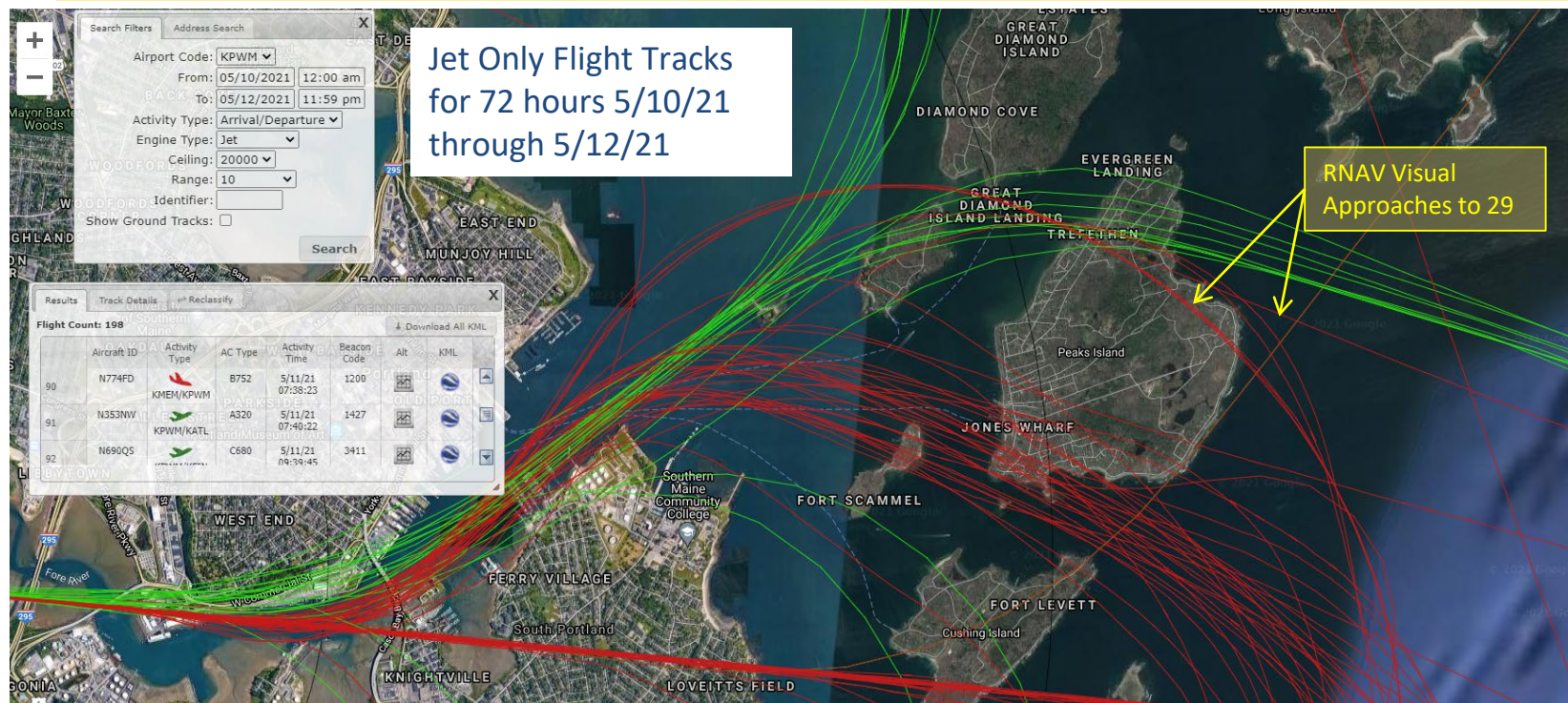


## 7. Old Business Item B: Review and discussion of the RNAV Visual (special) Approach



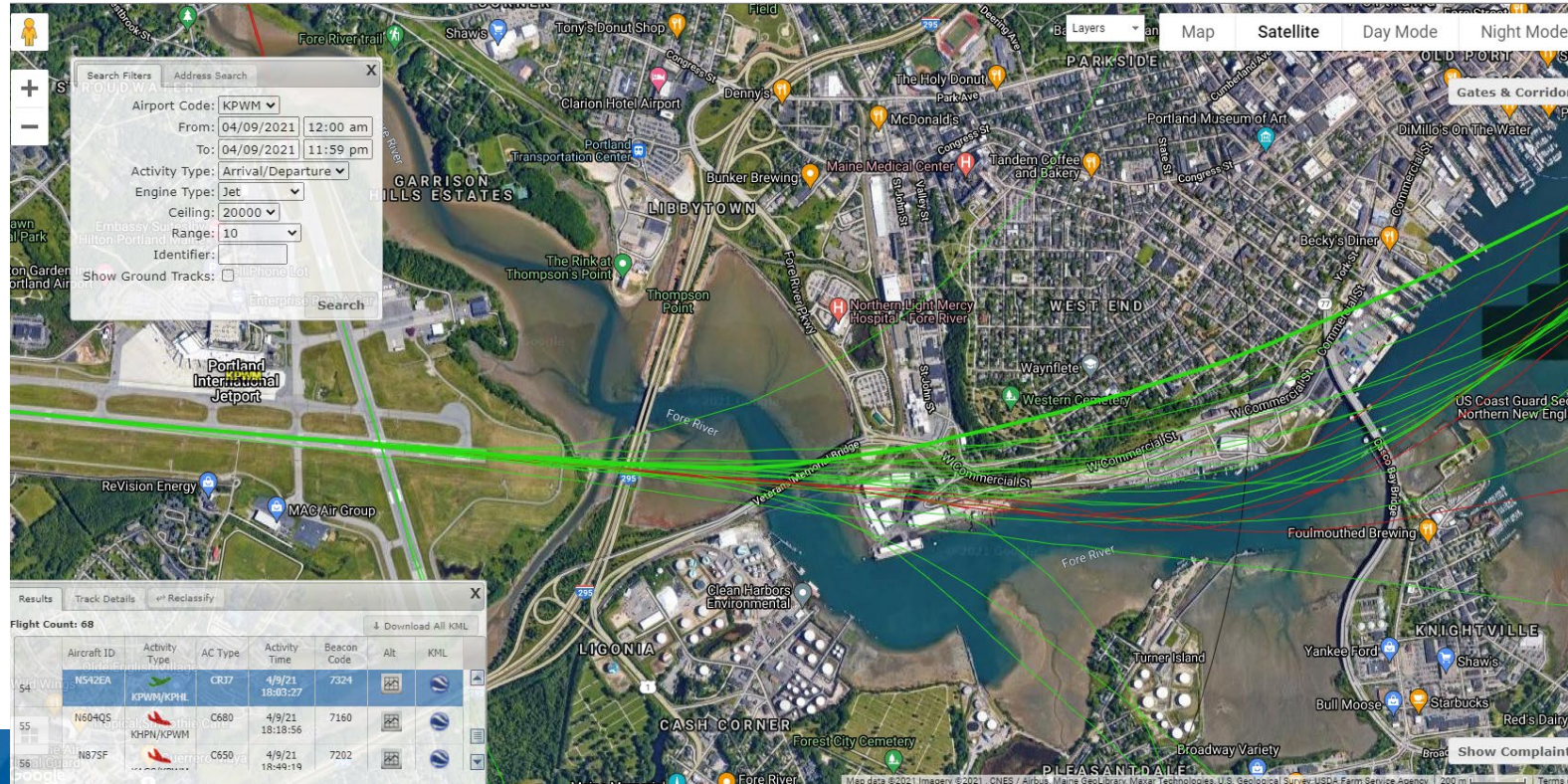


## 7. Old Business Item B: Review and discussion of the RNAV Visual (special) Approach





## 8. New Business Item A: Review of 11 departures and early north turns, and early south turns.

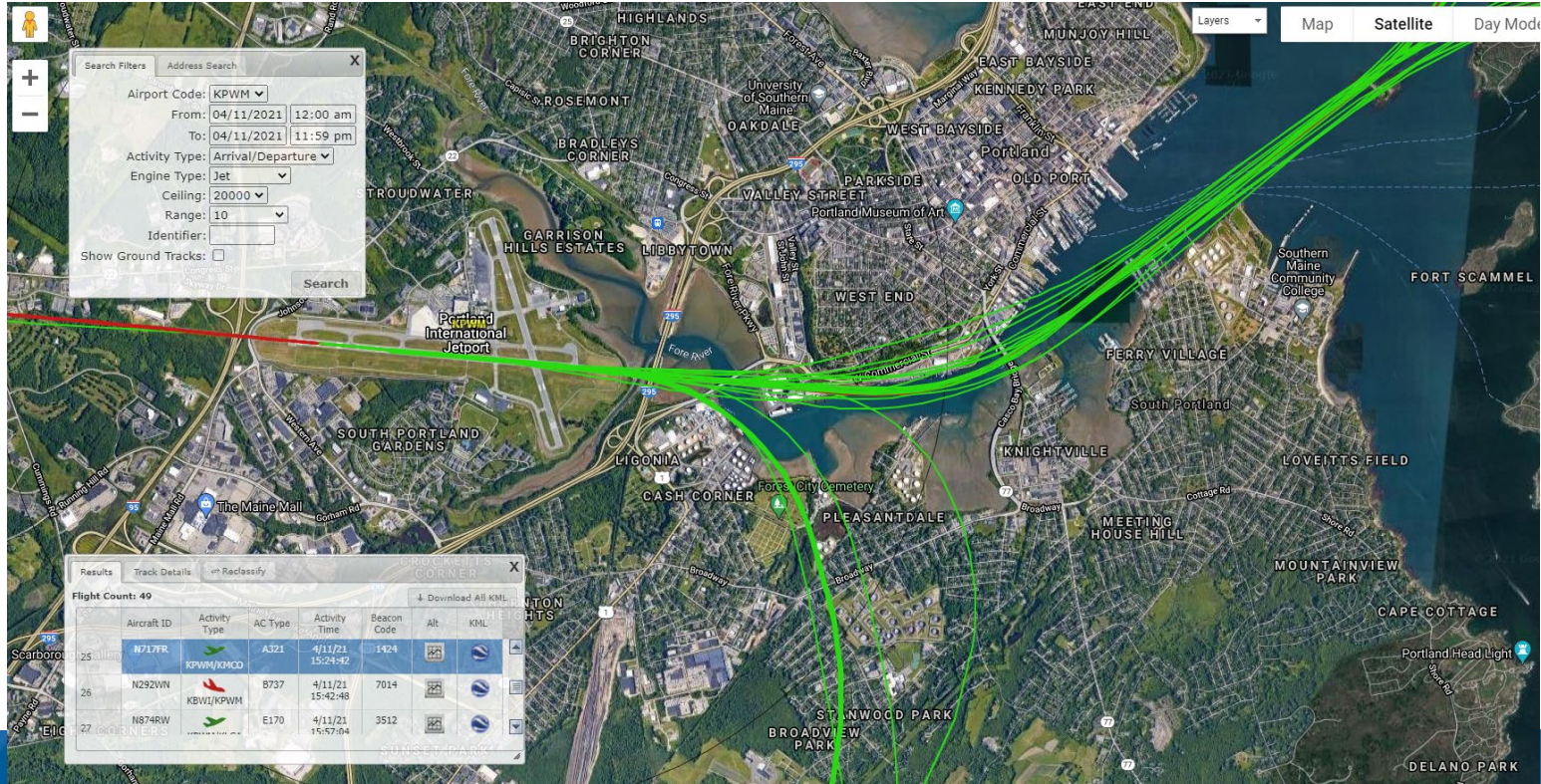


Flight tracks from April 9, 2021 show a CRJ700 regional jet departing that clips the Western Promenade and is north of commercial street.

ATC has confirmed that this is within tolerance for the procedure. Regional Jets are more prone to this shift due to winds shifting the aircraft north.



## 8. New Business Item A: Review of 11 departures and early north turns, and early south turns.



Flight tracks from April 11, 2021 show several flights using an early right turn south over South Portland and Cape Elizabeth.

ATC notes this departure is used when there is other traffic in the airspace.

## 8. New Business Item B: Flight Schedules May - October 2021

---

PWM will continue to report to the Committee changes in the airline schedule that occur during noise sensitive hours  
10pm-7am according to the FAA Day Night Average Sound Level (DNL) calculations.

PWM Noise Sensitive hours according to the Record of Approval is 11:30 p.m. – 6:15 a.m.



## 8. New Business Item B: Flight Schedules May – October 2021

Departures between 10:00 pm and 7:00 am						
Travel Month	May 2021	Jun 2021	Jul 2021	Aug 2021	Sep 2021	Oct 2021
Dep Time	Flights	Flights	Flights	Flights	Flights	Flights
0525	1					
0530	30	9	3	3		
0535					23	31
0540		3	5	35	31	31
0545		10	14	13	3	
0547						1
0550			25	31	30	31
0551	4	25	6			
0600	87	124	127	129	145	153
0603	22	2				
0604	5			15	30	30
0605	29	3				
0610		8	8	9	1	
0613	4					
0615	5					
0625					23	31
0627			4			
0645		4				
0648	1					
0652			10			
0700	29	29	42	62	37	31
<b>TOTAL DEPARTURES 10p - 7a</b>	<b>217</b>	<b>217</b>	<b>244</b>	<b>297</b>	<b>323</b>	<b>339</b>
<b>Daily Avg Departures 10p - 7a</b>	<b>7</b>	<b>7</b>	<b>8</b>	<b>10</b>	<b>11</b>	<b>11</b>
<b>TOTAL DEPARTURES 11:30p - 6:15a</b>	<b>187</b>	<b>184</b>	<b>188</b>	<b>235</b>	<b>263</b>	<b>277</b>
<b>Daily Avg Departures 11:30p - 6:15a</b>	<b>6</b>	<b>6</b>	<b>6</b>	<b>8</b>	<b>9</b>	<b>9</b>
<b>TOTAL DEPARTURES</b>	<b>782</b>	<b>1370</b>	<b>1520</b>	<b>1750</b>	<b>1550</b>	<b>1532</b>
<b>% of Arrivals occurring 10p - 7a</b>	<b>27.7%</b>	<b>15.8%</b>	<b>16.1%</b>	<b>17.0%</b>	<b>20.8%</b>	<b>22.1%</b>
<b>% of Arrivals occurring 11:30p - 6:15a</b>	<b>23.9%</b>	<b>13.4%</b>	<b>12.4%</b>	<b>13.4%</b>	<b>17.0%</b>	<b>18.1%</b>

## 8. New Business Item B: Flight Schedules May - October 2021

Arrivals between 10:00 pm and 7:00 am						
Travel Month	May 2021	Jun 2021	Jul 2021	Aug 2021	Sep 2021	Oct 2021
Arr Time	Flights	Flights	Flights	Flights	Flights	Flights
0004		28	1			
0034		26	31	31	7	
2205	2		18	22	5	
2211	24	2				
2220	1					
2222	5		21	27	6	
2229	1					
2230	13					
2237		28	29	16		
2239	26	2				
2240	5	1				
2245	1					
2246	26	4				
2250					3	5
2253		24	26	14		
2255		4	5	2		
2256	4					
2259	21	2				
2300		3	5	4	1	
2305	14	12	8	9	1	
2308			17	31	29	31
2310	4					
2315		10	14	13	24	26
2317				31	30	31
2321	27	4		15	30	30
2322					23	31
2324	4					
2330		4	4	5	1	
2335		24				
2339		27	31	31	7	
2343					23	31
2345			14		23	31
2346				15	30	31
2349				31	30	31
2350		4				
2359			28	16		
TOTAL DEPARTURES 10p - 7a	178	209	252	313	273	278
Daily Avg Departures 10p- 7a	6	7	8	10	9	9
TOTAL DEPARTURES 11:30p - 6:15a	31	127	123	188	228	242
Daily Avg Departures 11:30p - 6:15a	1	4	4	6	8	8
TOTAL ARRIVALS	782	1,372	1,540	1,767	1,565	1,550
% of Arrivals occurring 10p - 7a	22.8%	15.2%	16.4%	17.7%	17.4%	17.9%
% of Arrivals occurring 11:30p - 6:15a	4.0%	9.3%	8.0%	10.6%	14.6%	15.6%



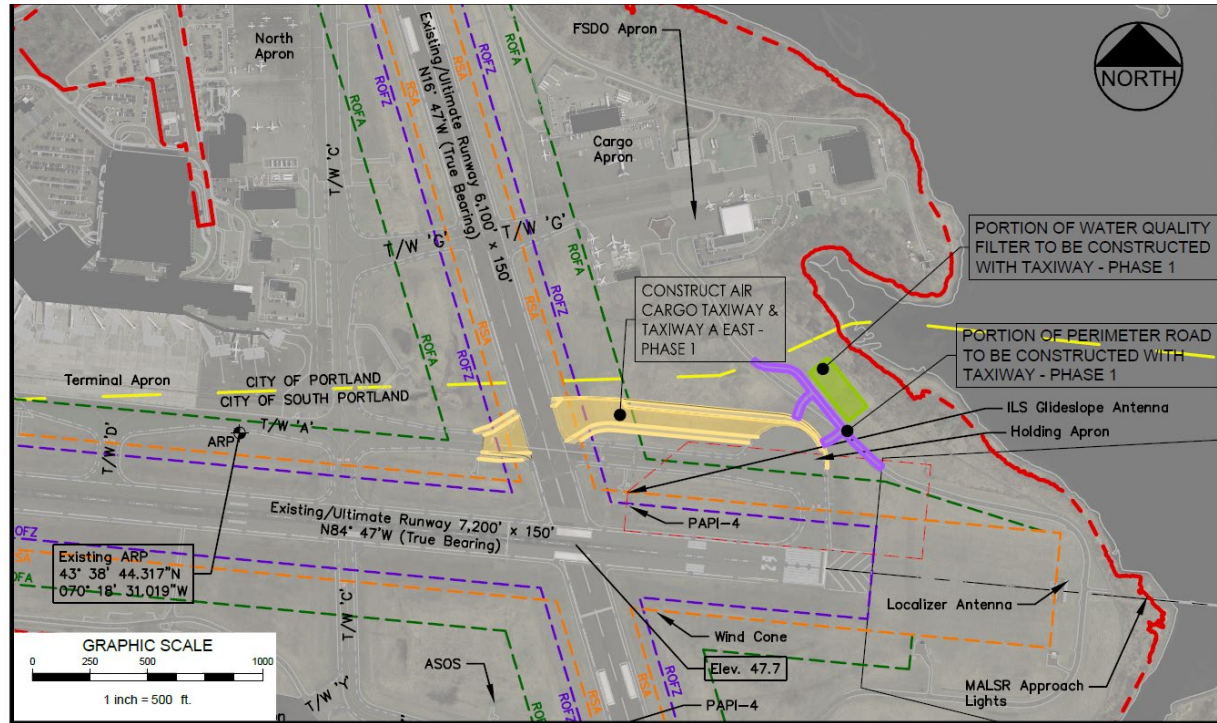
## 8. New Business Item C: Construction Currently Underway

### Project:

Construct Air Cargo Taxiway & Taxiway A East – Phase 1

### Schedule & Impacts:

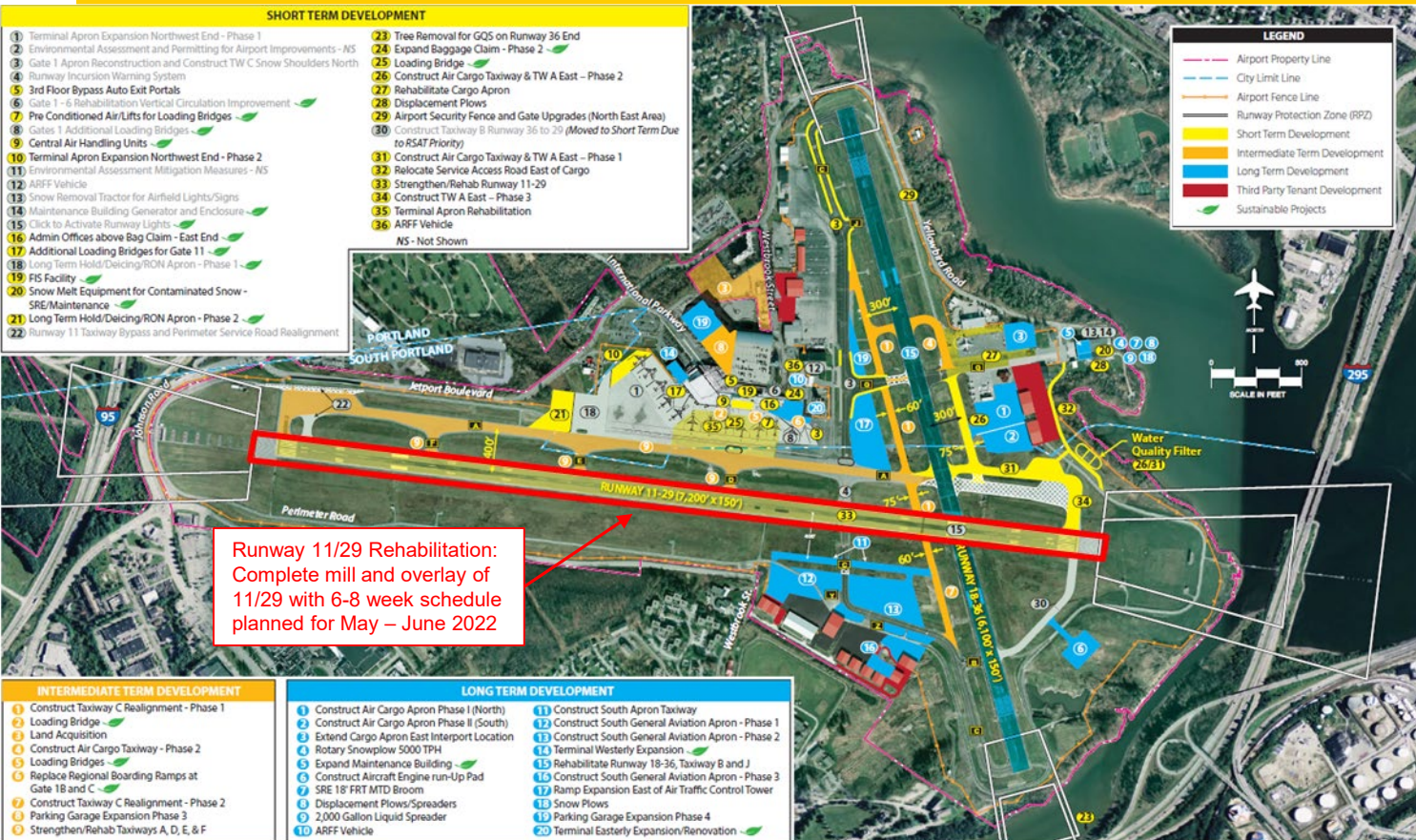
Runway 18/36 closed starting June 1<sup>st</sup> for 14 weeks.



# 8. New Business Item D: Airfield Construction Spring 2022

**Project:**  
Rehabilitation of  
Runway 11/29

**Schedule & Impacts:**  
Runway 18/36  
closed 6 to 8 weeks  
in May and June  
2022



## 9. Questions / Public Comment

---

- Reminder for public comment:  
You will need to use the “raise your hand to speak” feature in WebEx. In the participant panel click on the hand icon next to your name. If you are using a mobile device press \*3 to “raise your hand”. You will be unmuted by the host when it is time for public comment.
- Please state your name and address for the record.



## 10. Next Meeting Date

---

**Propose: Thursday, October 21, 2021 for next meeting**

