



PWM Public Informational Meeting Proposed Parking Expansion

April 11, 2024 at 6:00 pm



*Maine's
Home
Airport.*

Agenda

- Welcome – Paul Bradbury
- Air Service Trends at PWM – Paul Bradbury
- Proposed Parking Project Review – Paul Bradbury & Owens McCollough, Sebago Technics
- Questions & Answers
- Close

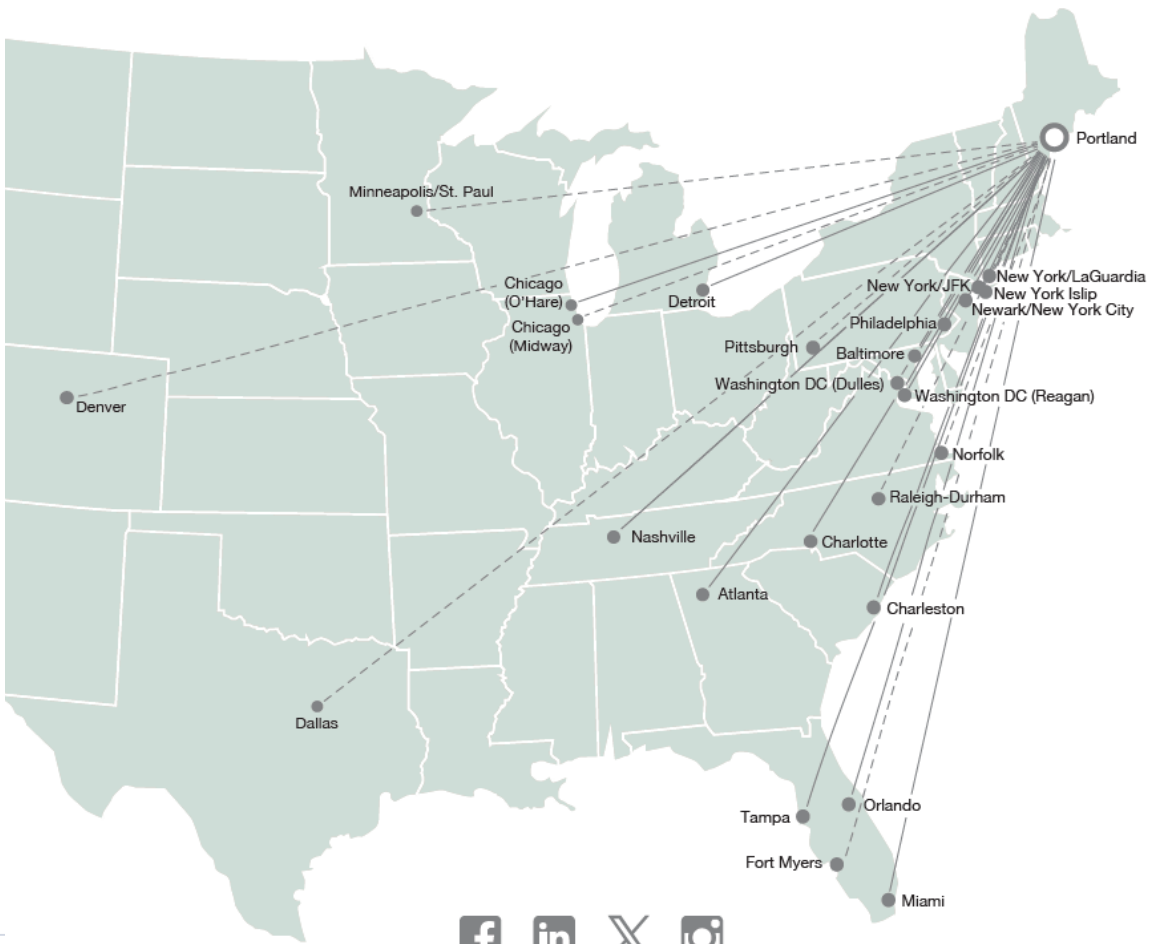




AT A GLANCE



NON-STOP DESTINATIONS



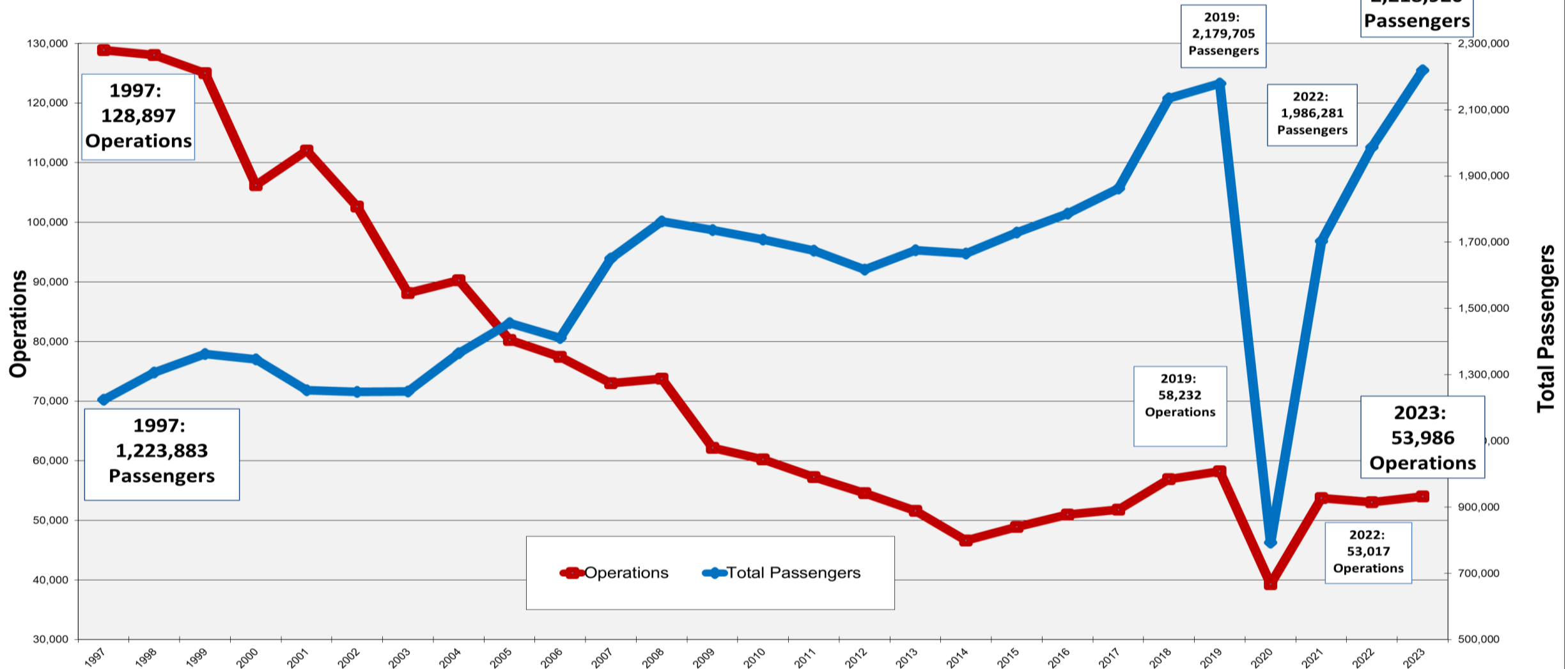
--- Seasonal Flights

NON-STOP SERVICE *Seasonal Service

Atlanta	DELTA
Baltimore/Washington	Southwest
Charleston	Breeze
Charlotte	American Airlines
Chicago Midway	* Southwest
Chicago O'Hare	American Airlines UNITED
Dallas	* American Airlines
Denver	* UNITED
Detroit	DELTA
Fort Myers	* Breeze
Miami	* American Airlines
Minneapolis/St. Paul	* DELTA * sun country airlines
Nashville	Southwest
Newark/New York City	UNITED
New York Isip	* Breeze
New York/JFK	* jetBlue DELTA
New York/LaGuardia	American Airlines DELTA
Norfolk	* Breeze
Orlando	FRONTIER Breeze
Philadelphia	American Airlines
Pittsburgh	* Breeze
Raleigh-Durham	* FRONTIER
Tampa	Breeze
Washington Dulles	UNITED
Washington Reagan	American Airlines

PWM Air Service Trends

Aircraft Operations (arrivals & departures) vs Total Passengers



From 1997 to 2019 operations are down **54.8%** and total passengers are up **78.1%**.

For 2023 Operations are **7.3%** below 2019 levels and total passengers are **1.8%** above 2019 levels.

What Changed?

1997 Aircraft:

- Beechcraft: 19 seats
- Saab 340: 34 seats
- ERJ 135: 37 seats
- ERJ 140: 44 seats
- Dornier 328: 45 seats
- CRJ: 50 seats
- B737-300: 126 seats
- MD80: 142 seats

**Average seats per flight:
57.5**



What Changed?

2023 Aircraft:

- E-145: 50 seats
- E-170: 65 seats
- E-175: 76 seats
- CRJ 900: 76 seats
- A220: 137 seats
- A319: 126 seats
- A320: 150 seats
- A320neo: 186 seats
- A321: 230 seats
- A321neo: 240 seats
- B737- 700: 143 seats
- B737-800: 175 seats
- B737-900: 179 seats
- B737-Max 9: 179 seats

Average seats per flight:

110.7

A321neo



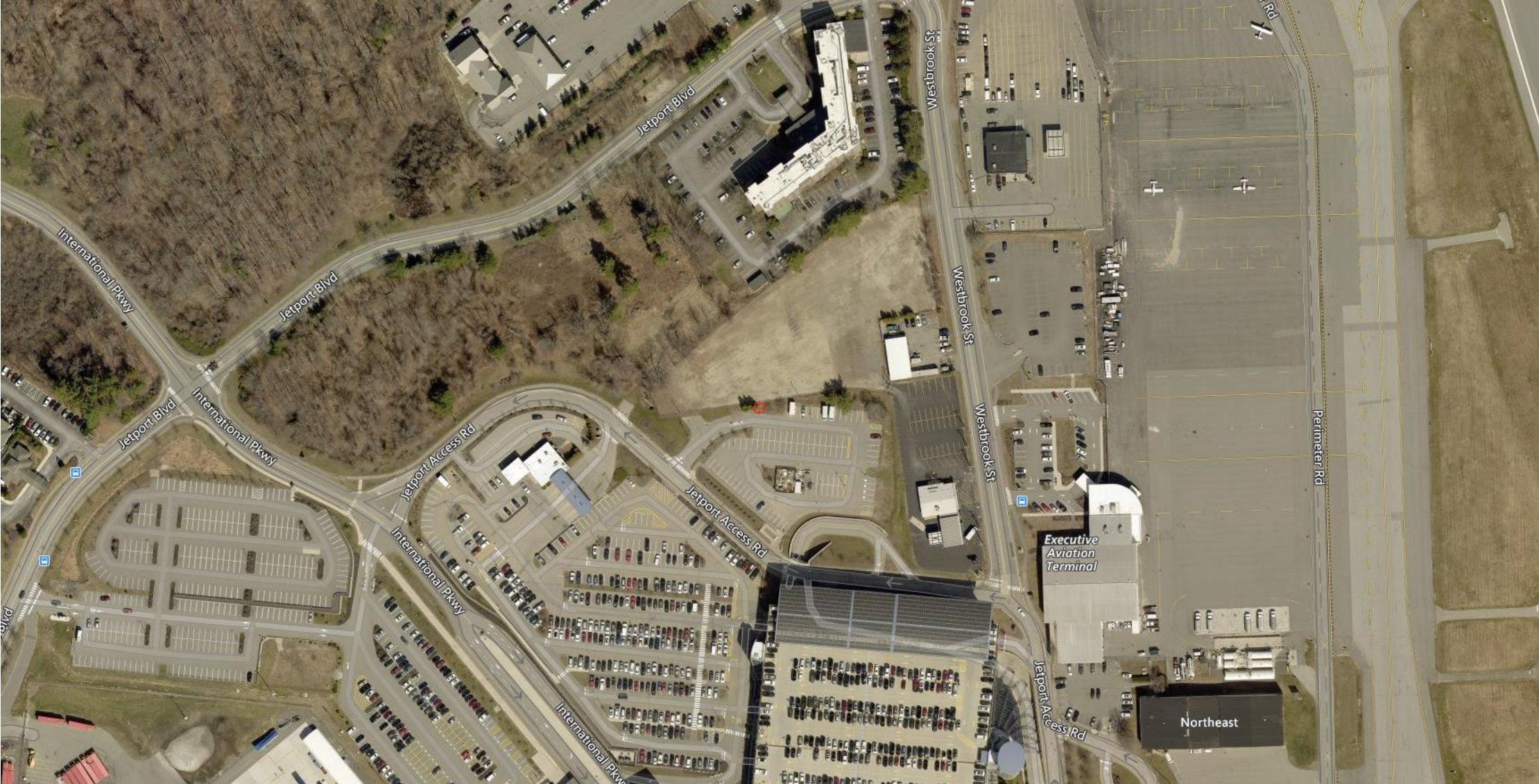
A220



B737



Proposed Parking Project



AREA PLAN SURFACE PARKING EXPANSION PROJECT

SEBAGO
TECHNICAL
CIVIL ENGINEERING SURVEYING LANDSCAPE ARCHITECTURE
March 25, 2024

PWM
Portland International Jetport

Maine's
Home
Airport.

- **Two-Paved Parking Lots**
- **Reconfigures Existing Parking Lots and New Parking Lot Construction**
- **Consistent with Parking Masterplan**
- **Current Total Long -Term Parking: 3,223**
- **Displaced Parking: 402 Spaces (Valet and Cell Phone Lot)**
- **Total Parking Construction Shown: 684**
- **Net Increase: 282 Spaces**
- **56 Level 1 EV Parking**
- **141 Level 1 EV Ready**



SURFACE PARKING EXPANSION PROJECT

■ PARKING PLAN



Wetland Mapping



WETLAND DELINEATION WAS PERFORMED BY COLE PETERS, PWS & ANNA K. BIDDLE, LSS OF SEBAGO TECHNICS, INC. ON MAY 31, 2023

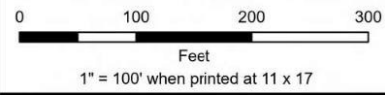


FIGURE 1: NATURAL RESOURCES MAP
TAX MAP 210A, LOTS B-1 & A-7

- AREA OF INTEREST (AOI)
- TOWN BOUNDARY
- CATCH BASIN
- ⊕ CULVERT OUTLET - 24" RCP
- DELINEATED WETLAND BOUNDARY
- WETLANDS WITHIN AOI
- 2' CONTOUR
- 10' CONTOUR

INFORMATION: MAINE GEOLIBRARY
2020 USGS LIDAR TOPOGRAPHY
2021 SPRING ORTHOIMAGERY

THIS IS NOT A BOUNDARY SURVEY.
WETLAND FEATURES WERE DELINEATED
USING GPS TECHNOLOGY CAPABLE OF SUB-METER ACCURACY.

LOCATION: JETPORT BOULEVARD
PORTLAND, ME

DATE: 7/10/2023

PROJECT NUMBER: 19059

19059.aprx

WWW.SEBAGOTECHNICS.COM

75 John Roberts Rd. - Suite 4A
South Portland, ME 04106
Tel. 207-200-2100

Map Projection : NAD 1983 StatePlane Maine West FIPS 1802 Feet



DATE: 02/28/2024
 SCALE: 1" = 50'
 PROJECT: 19059

DESIGNED: TFO
 DRAWN: EPR
 CHECKED: PDD

DATE: 02/28/2024
 SCALE: 1" = 50'
 PROJECT: 19059

OVERALL GRADING PLAN
 OF
 PORTLAND INTERNATIONAL JETPORT PARKING EXPANSION
 PORTLAND, MAINE STREET
 FOR
 PORTLAND INTERNATIONAL JETPORT PVM
 1001 WESTBROOK STREET PORTLAND, MAINE 04102

SEBAGO
 TECHNICAL SERVICES CORP.
 75 Sibley Ave. #408
 Portland, ME 04106
 Tel: 207-265-1100

PAUL D. OSTROFSKI
 REGISTERED PROFESSIONAL ENGINEER
 No. 0174
 State of Maine
 03/18/2025

PAUL D. OSTROFSKI PE 11172
 JAY BELL, LEAD, NJ 236



Wetland Mapping

8,618 S.F. of Wetland Alteration.

Questions?